



201 Grandin Road  
Maineville, Ohio 45039  
(513) 677-0500

# CGS Installation Manual

---

Copyright 2015 E. F. Bavis & Associates, Inc.  
All Right Reserved

Revised: 10/29/2015  
PN: 00900284



# CGS Installation Manual

## Table of Contents

Tools Needed .....	1
Stand Installation Instructions.....	2
Typical Site Dimensions .....	4



# **CGS Installation Manual**

## **Tools Needed**

1 - 50lb. Bag of Fast Set Concrete

1 - 5 Gallon Bucket

1 - 1 Gallon Jug of Water

Small Concrete Trowel

Drywall Mud Mixer

1/2" Electric Drill

Extension Cords

Shims

Level

Tape Measure

#2 Phillips Screwdriver

1/4" Drive Ratchet

5/16" Socket - 1/4" Drive

Wire Strippers/Crimpers

# CGS Installation Manual

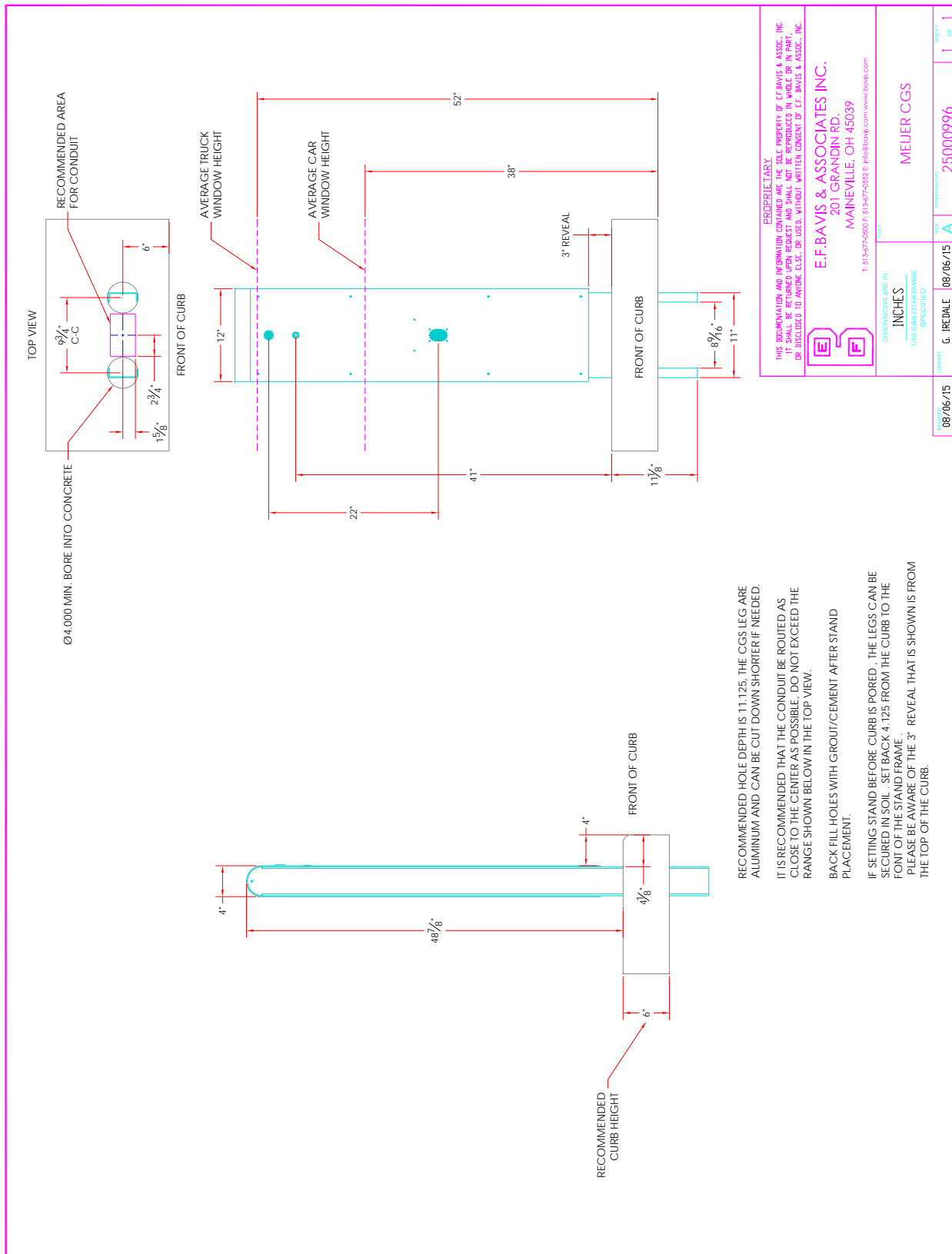
## Stand Installation Instructions

**NOTE: Please refer to the Typical Site Dimension layout in this manual. If the site conditions are not correct, please contact the factory for further instructions.**

1. The concrete cores of the island should be removed and the holes will need to be dug and cleaned out to a depth of 12".
2. Insert the stand into the holes to dry fit. The bottom of the stand should sit on the concrete surface (see Typical Site Dimensions).
3. Using a level, determine if shims are required to plumb the stand.
4. Remove the stand from the holes.
5. Using a #2 Phillips screwdriver, remove the screws on both sides of the top of the stand to remove the top cap. Set aside the top cap to be re-installed later.
6. Using a 1/4" drive ratchet with a 5/16" socket, remove the (2) 6-32 nylon locking nuts located on the inside top of the back panel.
7. Pull the top of the panel back, and then slide it up to remove it from the stand body. Set aside the back panel to be re-installed later.
8. Mix the concrete and water to the desired consistency in the 5 gallon bucket using the drill and mud mixer.
9. Fill the holes with the concrete up to approximately 1" to 1-1/2" from the top.
10. Insert the stand into the concrete filled holes. If needed, use shims to plumb the stand. Make sure to square the stand with the face of the curb.
11. Use a small concrete trowel to finish filling the holes with concrete and smooth flush with the top of the curb.
12. There should be (2) marked Cat5 cables pulled into the conduit that comes out of the curb into stand. Connect one of the Cat5 cables to the Cat5 pigtail sticking out of the base audio board enclosure using the white crimp cap connectors provided. Connect all 8 leads, color to color. Connect the other Cat5 cable to the white and blue wire pigtail connected to the call button using the white/blue and blue wire.
13. After installing the audio interface, test the unit by pressing the lighted call button. The button should flash to indicate to the customer that the process has been initiated. Once all functions have been tested and confirmed working, use the wire tie located to the right of the base audio board enclosure to strain relief the wires.

14. Re-install the back panel using the hardware removed in step 5.
15. Re-install the top cap using the hardware removed in step 4.
16. To initiate a call to the lane from the phone inside the building, lift the handset and press #891, if this is the only Curbside lane. If there are multiple lanes, press #89X with the X indicating which lane it is. If the phone fails to connect to the lane via this method, please contact Dick Tompsett from Meijer's at 616-791-3453 for further help.

# Typical Site Dimensions



<p>PROPRIETARY</p> <p>THE INFORMATION AND INFORMATION CONTAINED ARE THE SOLE PROPERTY OF E.F. BAVIS &amp; ASSOC., INC. ANY REPRODUCTION OR TRANSMISSION OF THIS INFORMATION WITHOUT THE WRITTEN CONSENT OF E.F. BAVIS &amp; ASSOC., INC. IS PROHIBITED.</p>	
<p><b>E.F. BAVIS &amp; ASSOCIATES INC.</b> 201 GRANDIN RD. MAINEVILLE, OH 45039</p> <p>T: 513-477-0500 F: 513-477-0552 E: info@efb.com www.efb.com</p>	
<p>DATE: 08/06/15</p> <p>DESIGNED BY: G. IREDALE</p>	<p>DATE: 08/06/15</p> <p>DESIGNED BY: MEIJER CGS</p>
<p>PROJECT: 25000996</p>	<p>SHEET: 1 OF 1</p>



