



201 Grandin Road
Maineville, Ohio 45039
(513) 677-0500

BavisAIR APS Pneumatic System

RS422 Upgrade Manual

Copyright 2014 E. F. Bavis & Associates, Inc.
All Right Reserved

Revised: 12/11/2014
PN: 00900081

Table of Contents

Installation.....1
Troubleshooting the BavisAIR Pneumatic System3
Customer End Adaptor Connections Diagram4
Teller End Adaptor Connections Diagram5
APS Customer Blower Wiring Diagram.....6
APS Customer Wiring Diagram7
APS Teller Wiring Diagram8

Caution: The following steps must be completed in the listed order, otherwise, damage to the Control Board, Eprom or RS422 Adaptor Board could result.

Installation

At the Teller End:

1. Remove the Teller Skin lid.
2. Disconnect the white 4 conductor connector of the Blower Cable from the flying leads near the lower right corner of the control board.
3. Disconnect the Grey Cat-5 cable from the flying leads near the upper right corner of the control board.

NOTE: At this time the 4 conductor Blower Cable and the Grey Cat-5 Cable should be disconnected. Go to the Customer end to install the Red RS422 Adapter (P/N 23291011) before installing the Blue Teller Adaptor (P/N 23291021) and reconnecting these cables.

At the Customer End: (See page 4 for wiring diagram)

1. Remove the Customer Skin lid, and Control Board Cover.
2. Disconnect the white 4 conductor connector of the Blower Cable from the flying leads near the lower right corner of the control board.
3. Disconnect the Grey Cat-5 cable from the flying leads near the upper right corner of the control board.
4. Using the Red RS422 Adapter, connect the flat 5 position connector into the J4 jack in the upper right corner of the control board, so the red wire is on the right end of connector.
5. Connect the mating 8 position Microfit connector of the Adapter Board into the flying lead connector of the control board that the Grey Cat-5 cable had been plugged into.
6. Gently remove the EPROM from the U10 socket in the upper left corner of the control board. This can be done by gently prying between the EPROM and the socket's mating surface with a small flat blade screwdriver. It is best to do this in small steps while alternating which end you are prying at.
7. Carefully insert the new EPROM (APS A624/TS 04-25-11, P.N. 23272011) fully into the socket making sure that all the legs are aligned with their respective contacts. (Note: The notch in the end of the EPROM should be lined up with the notch in the socket, which should be at the bottom of the socket.)
8. Reconnect the Grey Cat-5 cable to the mating 8 position Microfit connector that is on leads from the Adapter Board.

9. Reconnect the white 4 conductor connector of the Blower Cable to the flying leads near the lower right corner of the control board.
10. Reinstalling the Control Board Cover and the Skin Lid can be done either now or after testing.

Return to the Teller End: (See page 5 for wiring diagram)

1. Working with the Blue RS422 Adapter, connect the flat 5 position connector into the J4 jack in the upper right corner of the control board, so the red wire is on the right end of connector.
2. Connect the mating 8 position Microfit connector of the Adapter Board into the flying lead connector of the control board that the Grey Cat-5 cable had been plugged into.
3. Gently remove the EPROM from the U10 socket in the upper left corner of the control board. This can be done by gently prying between the EPROM and the socket's mating surface with a small flat blade screwdriver. It is best to do this in small steps while alternating which end you are prying at.
4. Carefully insert the new EPROM (APS A624/TS 04-25-11, P.N. 23272011) fully into the socket making sure that all the legs are aligned with their respective contacts. (Note: The notch in the end of the EPROM should be lined up with the notch in the socket, which should be at the bottom of the socket.)
5. Reconnect the Grey Cat-5 cable to the mating 8 position Microfit connector that is on leads from the Adapter Board.
6. Reconnect the white 4 conductor connector of the Blower Cable to the flying leads near the lower right corner of the control board.

Note: At this time there should be (1) 6 position Microfit connector on leads from the Adaptor Board that is not connected. This is now the connection port/jack for the optional system and error reporting equipment.

7. Reconnect the switches on the Teller Skin Lid.
8. Test operation.
9. Reinstall all removed covers and lid.

If further assistance is needed, contact the Technical Service Department at (513) 677-0500, and inform the Operator that you need assistance with an APS Pneumatic System.

Error Reporting:

There is an error reporting system built into the system. Errors such as a timeout, safety mechanism operation, etc. are recorded in addition to number of cycles and blower run time. It requires optional equipment from E.F. Bavis to view or download the error log.

Troubleshooting the BavisAIR Pneumatic System

This section assumes that the machine in question has been inspected for loose, damaged or missing parts, wiring, etc.

LED Diagnostics:

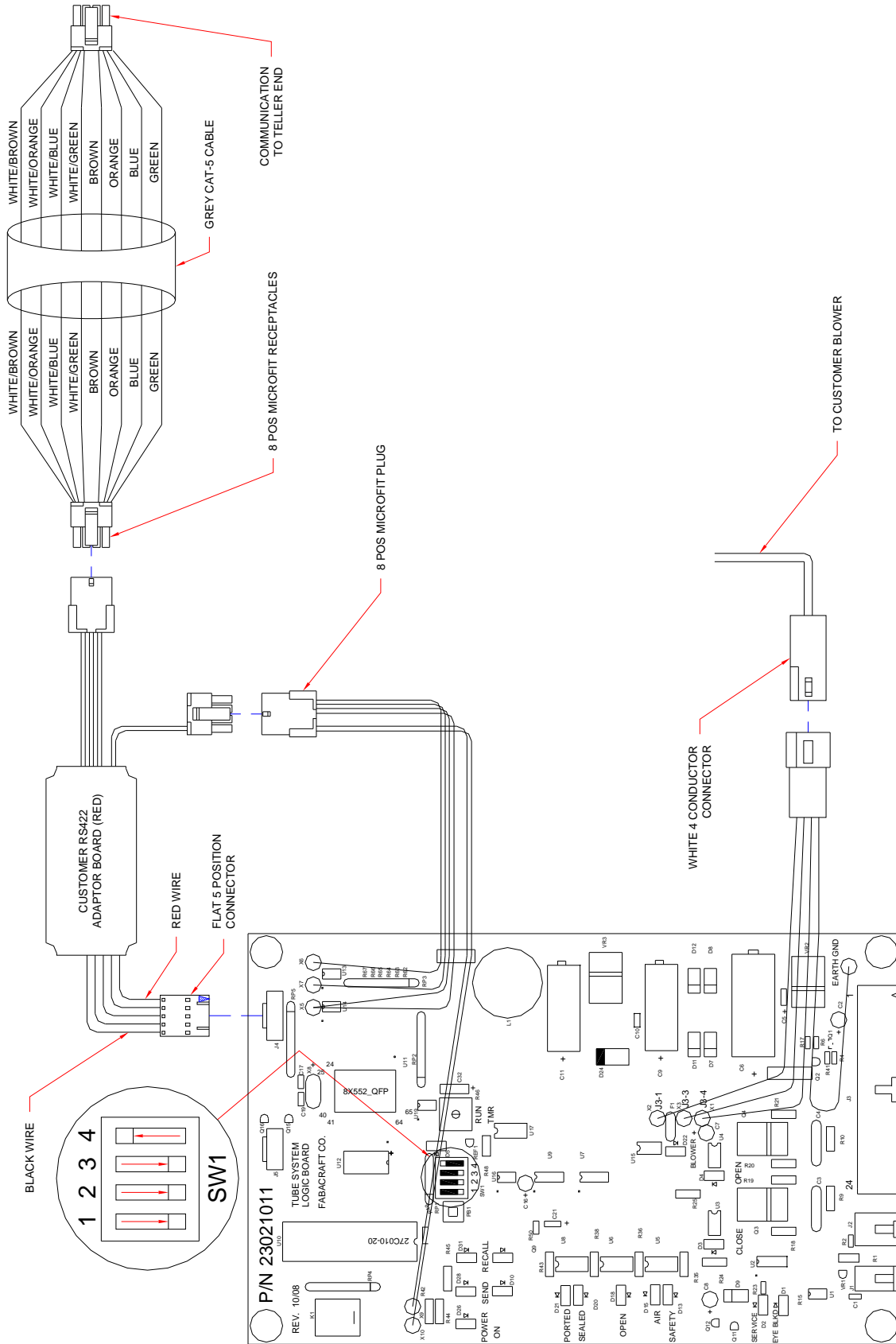
Power ON	Illuminates when the power button is depressed
Send (D28)	Illuminates when the send button is depressed
Recall (D31)	Illuminates when the recall button is depressed
CPU Active	Flashes indicating communication with the opposite board.
Send (D10)	Illuminates when a send move is in process.
Recall (D6)	Illuminates when a recall move is in process
Ported	Illuminates when the door is in the closed and ported position.
Sealed	Illuminates when the door is in the closed and sealed position.
Open	Illuminates when the door is in the open position.
Air	Illuminates when the pressure switch is activated by a carrier.
Safety	Illuminates when the door motor is running closed and the safety bar is activated. Note the LED will not illuminate if the motor is not running.
Blower	The blower motor is running.
Close	The door motor is running in the closed direction.
Open	The door motor is running in the open direction.
Service	The photo eye system is dirty or partially obscured.
Eye Blocked	The photo eye is blocked (carrier present).

NOTHING WORKS:

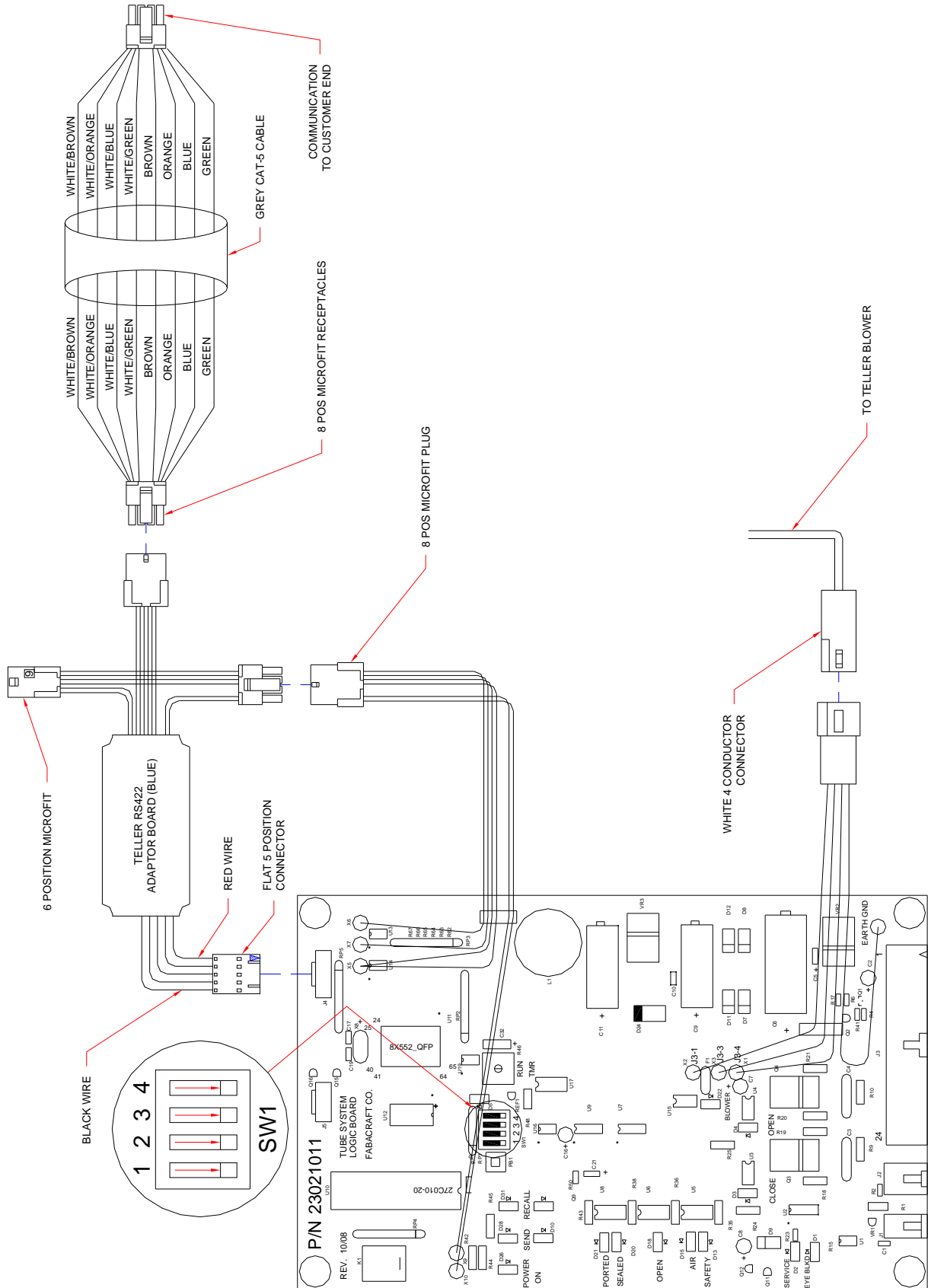
Is the power LED illuminated on the control boards? (Note that there are separate control boards and power on each end of the lane). Check both circuit breakers on the blower assembly. If the circuit breakers have white showing they are tripped. Reset the breaker and check again. If the power is not on check the 115vac power coming into the machine. Check the circuit breaker in the bank or have an electrician restore power to the unit.

Is the green COM LED flashing? If the COM LED is not flashing, you can reset both processors by simultaneously pressing the SEND and RECALL buttons at the teller end. This will reset the processors on both the teller and customer units. The COM LED should then start flashing.

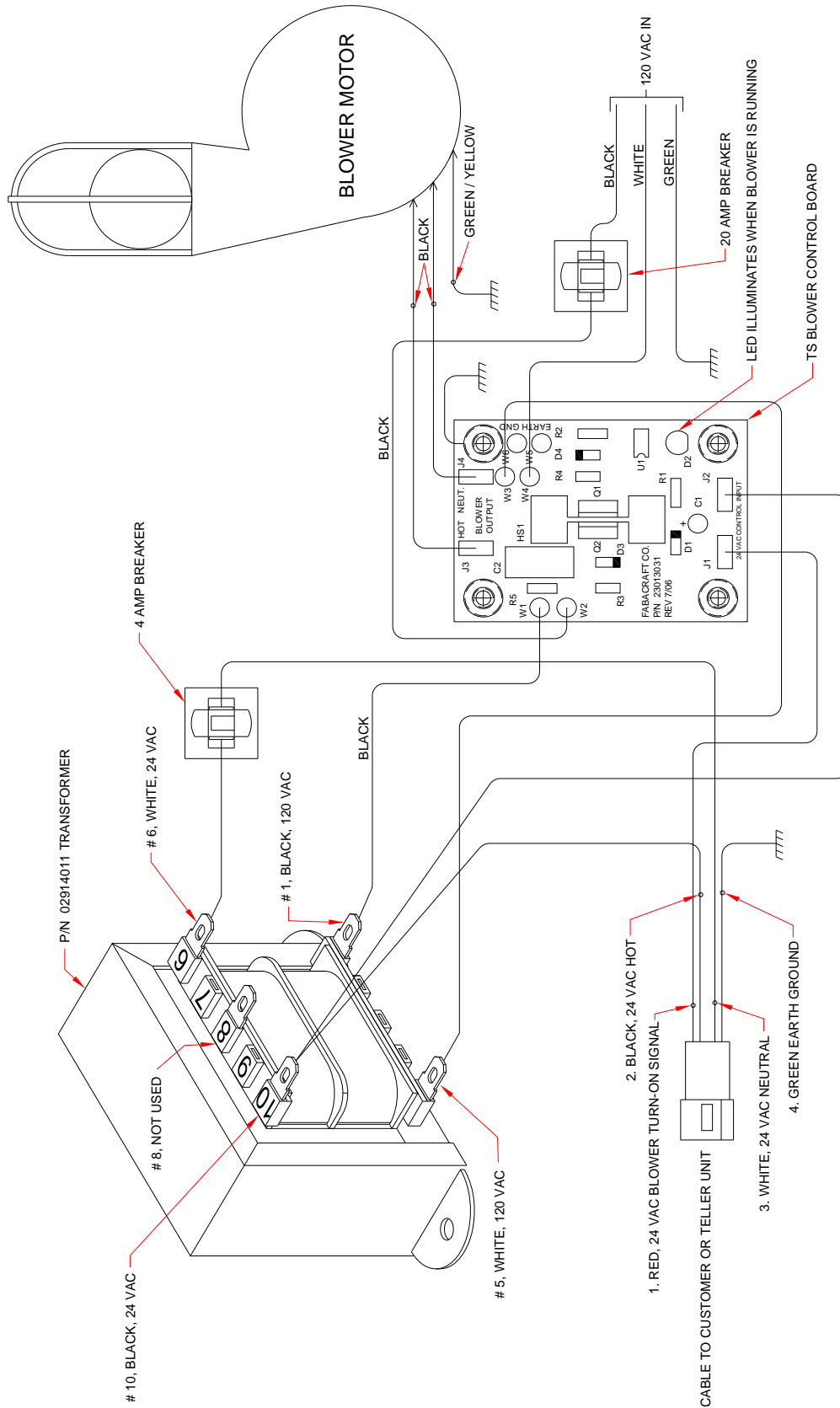
Customer End Adaptor Connections



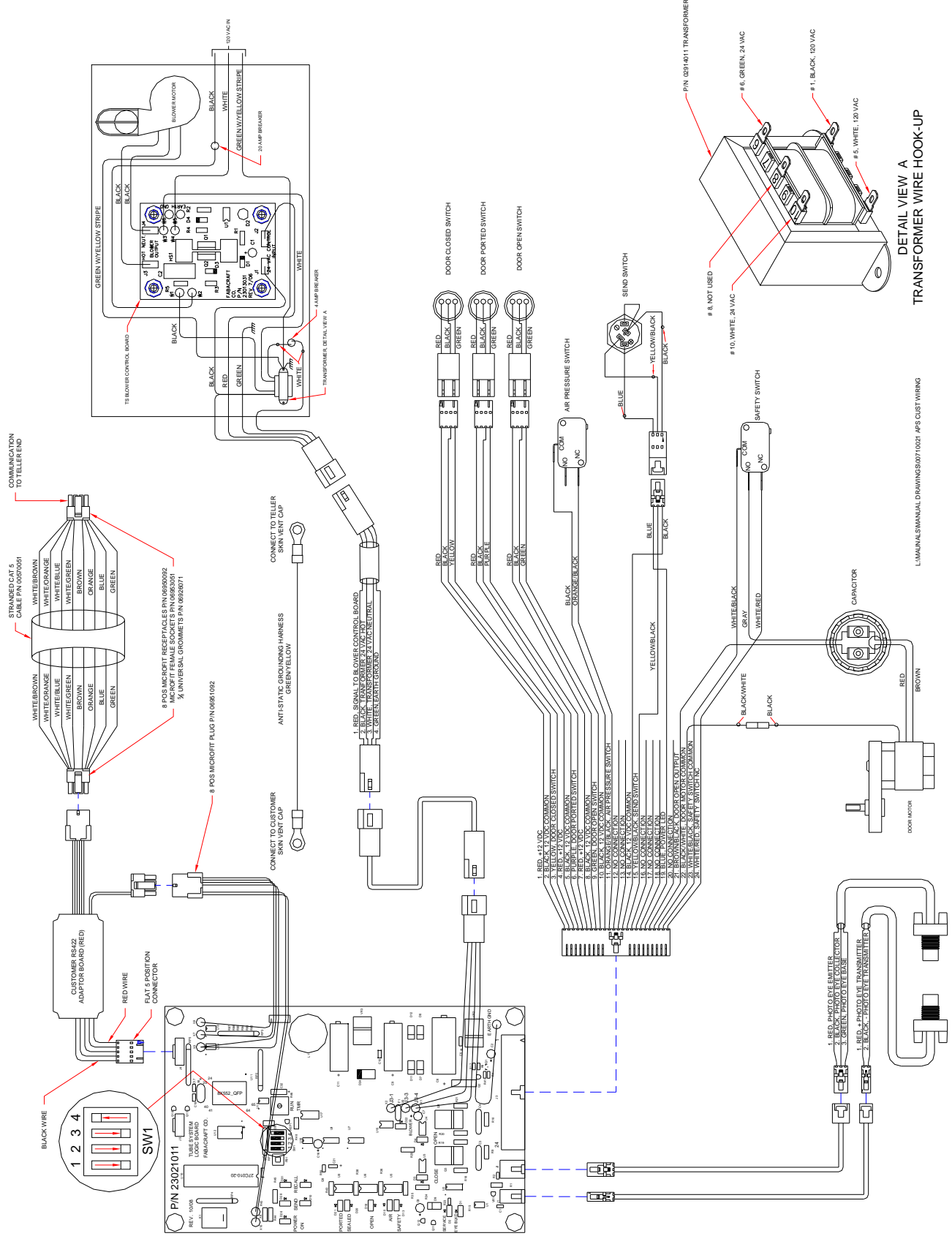
Teller End Adaptor Connections



APS Customer Blower Wiring Diagram



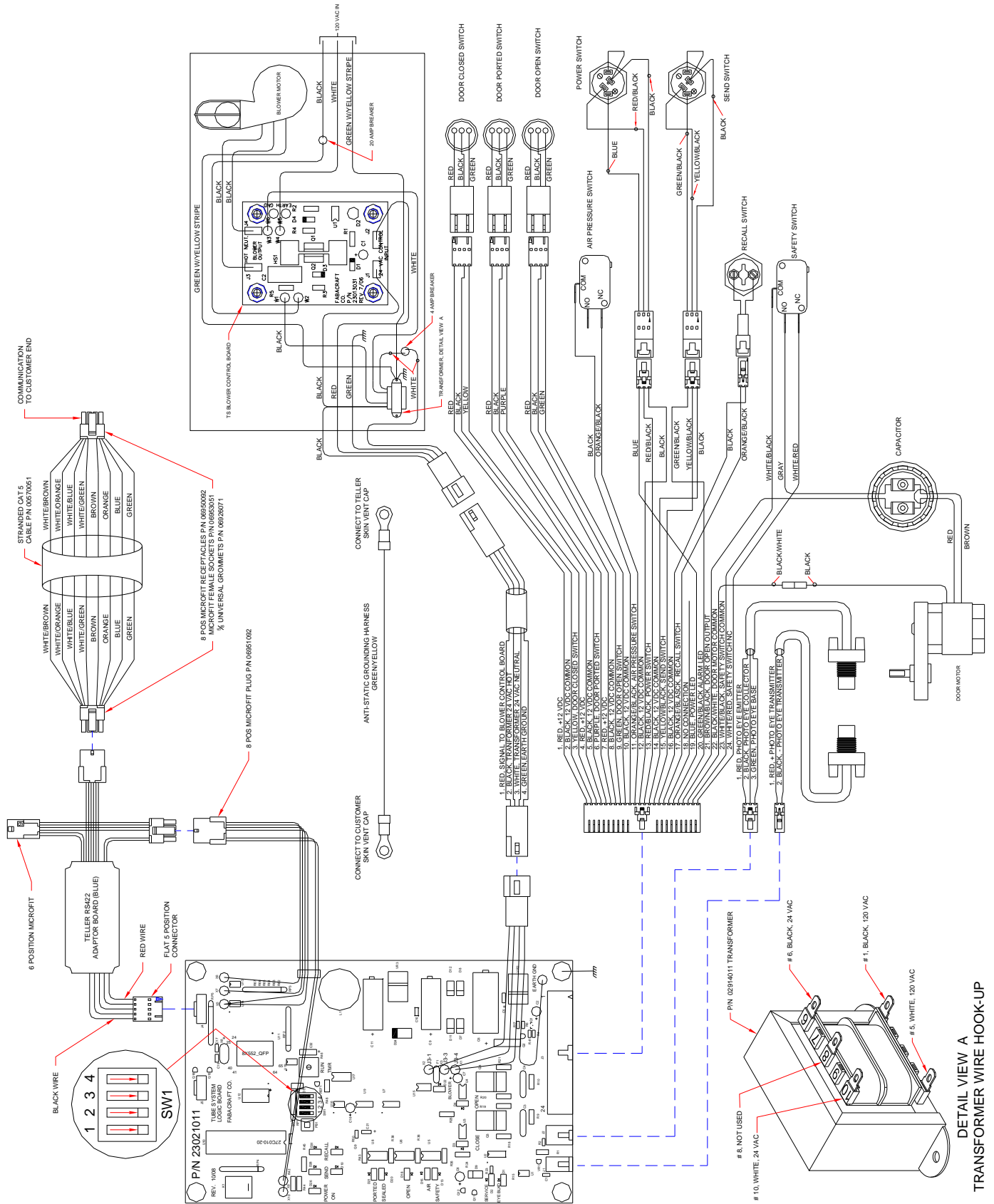
APS Customer Wiring Diagram



DETAIL VIEW A
TRANSFORMER WIRE HOOK-UP

LUMINA MANUAL DRAWINGS 00710027 APS CUSTOM WIRING

APS Teller Wiring Diagram



DETAIL VIEW A
TRANSFORMER WIRE HOOK-UP

