
CC Exchange Carrier

Replacement Parts Manual

E. F. Bavis & Associates, Inc.

201 Grandin Road
Maineville, Ohio 45039
(513) 677-0500

CC Carrier Replacement Parts Manual

Table of Contents

CC Carrier Latch Kit.....	1
White Tape Block Kit.....	3
CC Molded Cable Block Kit.....	5
CC Carrier Liner Kit.....	7
CC Carrier Door Kit.....	9
Drive Tape Removal & Install.....	11
CC Carrier Diagram.....	13

CC Carrier Latch Kit 04221011

Parts List

Part #	Description	Qty.
00687011	CC Car Manual	1
01008001	Small Wire Tie	2
04052011	TT Twist Car Spring	2
04053994	CC Carrier Latch	1
04095011	Carrier Latch Rod	1
04115011	Clear Grease 4cc Tube	1
92042123	#6-32 x 1/4 Phillips Flathead Screw	4
92042723	#6-32 x 1/4 Phillips Truss Head	10
93005063	#8-32 Hex Thin Nylon Locking Nut	1
94039233	3/16 x 3/16 Stripper Bolt	1

Tools Needed

Medium Phillips Screwdriver
3/32 Allen Wrench
11/32 Wrench
Cutters

CC Carrier Latch Replacement Instructions

Please refer to the diagram on page 13 when replacing the carrier latch.

1. Remove the cc carrier (please see the drive tape removal and install instructions on page 11).
2. Remove the four phillips flat screws and the ten phillips truss screws that hold the carrier backcover and cover to the chassis with a medium phillips screwdriver. Remove the covers.
3. Remove the twist car springs and discard.
4. Use a 3/32 allen wrench and an 11/32 wrench and remove the 3/16" stripper bolt from the carrier latch.
5. Cut the wire tie that holds the latch rod in place and remove.

6. Remove the carrier latch rod.
7. Slide out the old carrier latch and remove.
8. Take the clear grease provided and lube the back of the new carrier latch that touches the carrier chassis. Also lube the hole in the latch that the latch rod goes through.
9. Put the carrier latch into place on the carrier chassis and slide the carrier latch rod back into place the same way as you removed it in step 7.
10. Use a wire tie provided to secure the carrier latch rod back into place. Cut off the extra.
11. Connect the short cable to the latch the same way as you removed it in step 4. Put a little lube on both sides of the latch where the 3/16" stripper bolt goes through.
12. Install the new TT twist car springs. Make sure that the hook of the spring does not catch on the edge of the carrier chassis when the latch is moving.
13. Lube the two cable blocks with the clear grease provided. If this carrier has a cable pulley instead of a cable block, do not lube the pulley.
14. Activate the carrier door latch to make sure that the carrier door opens and closes freely. If it does not, check the following:
 - A. The door spring bolts (if applicable) are too tight. Slightly loosen them.
 - B. The 10-32 nuts that hold the carrier door arms in place are too tight. Slightly loosen them.
 - C. The door pivots are damaged. Order new ones from the factory. The part number is 04006012.
 - D. The carrier has been hit. Please consult the factory for further assistance. A replacement carrier might need to be sent.
15. Mount the carrier backcover and cover to the chassis the same way as you removed it in step 2. Use the screws provided if needed.
16. Reattach the cc carrier (please see the drive tape removal and install instructions on page 11).
17. Run the unit for proper operation.

White Tape Block Kit 04221021

Parts List

Part #	Description	Qty.
00687011	CC Car Manual	1
04010033	White TT HO Spherical End Tape Block	1
04054011	1/4" Acute Angle Washer	1
93042723	#8-32 x 1/4" Phillips Truss Screw	2
95162302	1/4-20 x 1" Hex Cap Screw	1

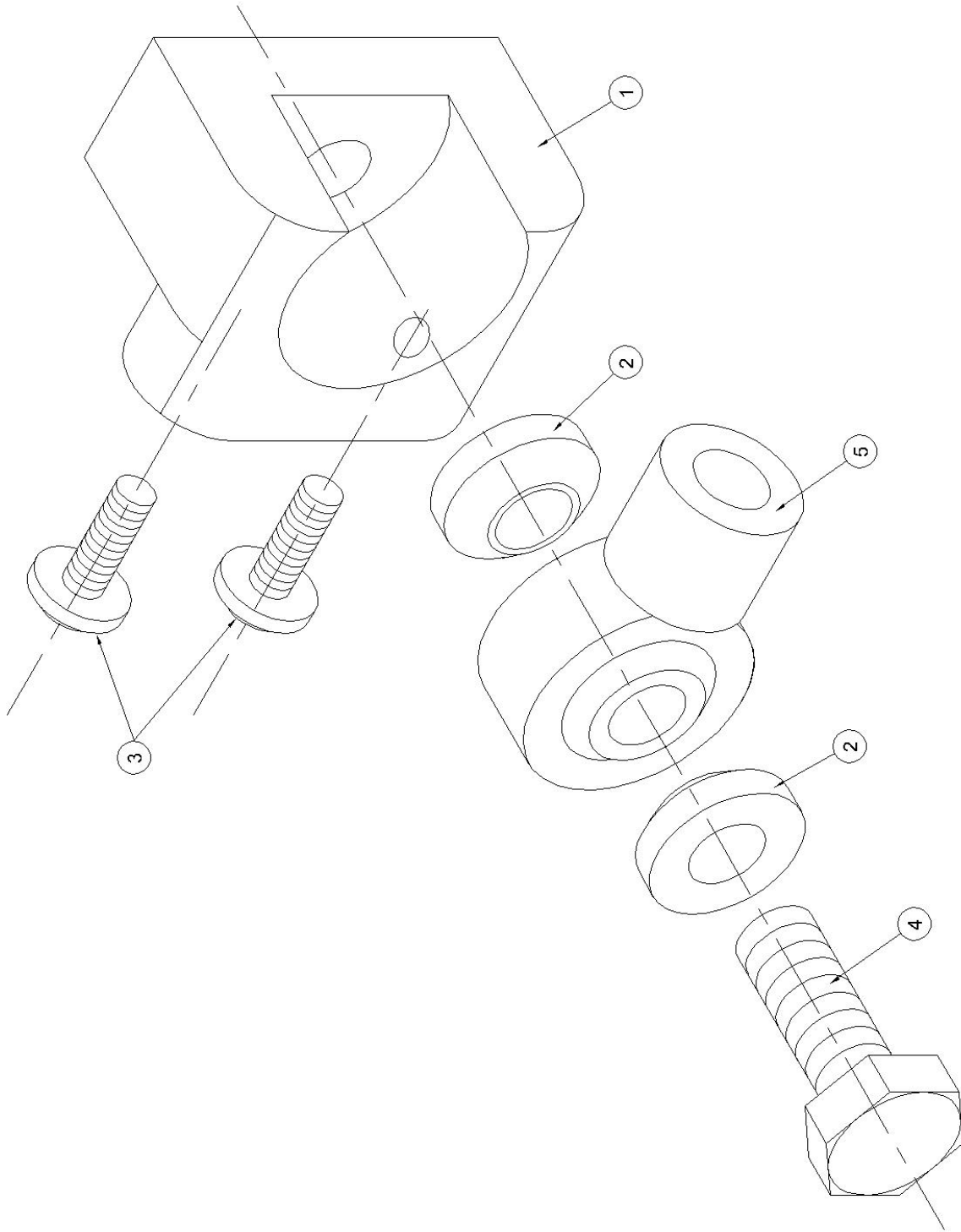
Tools Needed

Medium Phillips Screwdriver
7/16 Nutdriver

White Tape Block Replacement Instructions

Please refer to the diagram on page 4 when replacing the white tape block.

1. Remove the CC Carrier (please see the drive tape removal and install instructions on page 11).
2. Use a 7/16 nutdriver and remove the 1/4 - 20 hex cap screw that holds the white TT ho spherical end tape block in place. Discard the hex cap screw.
3. Discard the old white TT ho spherical end tape block and the two 1/4 acute angle washers.
4. Take the new 1/4 - 20 x 1 hex cap screw and slide it through one 1/4 acute angle washer, the pivot post, and the other 1/4" acute angle washer and screw it into the new white TT ho spherical end tape block. Make sure that the 1/4" acute angle washers are going in the right direction. Tighten the 1/4-20 bolt with the 7/16 nutdriver.
5. Check and make sure that the white TT ho spherical end tape block pivots freely. If it does not, check the pivot post for damage.
6. Reattach the CC Carrier (please see the drive tape removal and install instructions on page 11).
7. Run the unit and check for proper operation.



ITEM	PART #	DESCRIPTION	QTY
1	04010033	WHITE TT HO SPHERICAL END TAPE BLOCK	1
2	04054011	1/4" ACUTE ANGLE WASHER	2
3	93042723	#8-32 X 1/4" PHIL TRUSS SCREW	2
4	95162302	1/4-20 X 1" HEX CAP SCREW	1
5		FEMALE END ROD SHORTENED	-

• - DENOTES ITEMS FOR REFERENCE AND NOT INCLUDED IN KIT

CC Molded Cable Block Kit 04221051

Parts List

Part #	Description	Qty.
00687011	CC Car Manual	1
04068012	CC Molded Cable Block 'B'	1
04264991	CC Carrier Retrofit Kit	1
04115011	Clear Grease 4cc Tube	1
04207991	CC Long Cable Replacement Kit	1
92042123	#6-32 x 1/4" Phillips Flathead Screw	4
92042723	#6-32 x 1/4" Phillips Truss Screw	10
92005002	#6-32 Nylon Locking Nut	5
93044623	#8-32 x 1/4" Phil Pan Self Tapping	11

Tools Needed

Medium Phillips Screwdriver
5/16 Nutdriver

CC Molded Cable Block Replacement Procedure

Please refer to the diagram on page 13 when replacing the molded cable blocks

1. Remove the cc carrier. Please see the drive tape removal and install instructions section on page 11.
2. Remove the four phillips flat screws and the ten phillips truss screws that hold the carrier backcover and cover with a medium phillips screwdriver. Remove the covers.
3. Replacing cable block A
 - A. Refer to the cc long cable replacement manual provided with the kit.
4. Replacing Cable Block B
 - A. Use a 5/16 nutdriver and remove the two #6-32 nuts that hold the B block in place. Discard the nuts.
 - B. Use the clear grease provided and put a small bead inside the grooves of the new B block.
 - C. Slide the cable B block back on the studs making sure that you do not pinch the short cable under the block. The cable must be inside the slot of the cable block so that the carrier door will open and close properly.
 - D. Use a 5/16 nutdriver and reattach the cable blocks with the #6-32 nylon locking nuts provided.

5. Replace the C block by referring to the manual provided with the cc carrier retrofit kit.
6. Use the Carrier Latch to test the door for proper operation.
7. Mount the CC Backcover and cover the same way as you removed them in step 2. Use the screws provided if needed.
8. Reattach the CC Carrier. Please see the drive tape removal and install instructions section on page 11.
9. Test the unit for proper operation.

CC Carrier Liner Kit 04221061

Parts List

Part #	Description	Qty.
00687011	CC Car Manual	1
04088011	CC Liner Side	1
04088021	CC Liner Back	1
04088031	CC Liner Top and Bottom	2
55555174	.050 Short Arm Allen Wrench	1
92042123	#6-32 x 1/4" Phillips Flathead Screw	4
92042723	#6-32 x 1/4" Phillips Truss Screw	10
93044623	#8-32 x 1/4" Phil Pan Self Tapping	11

Tools Needed

Medium Phillips Screwdriver
11/32 Nutdriver
.050 Allen Wrench (Provided)
Putty Knife
Pliers

CC Carrier Liner Replacement Instructions

Please refer to the diagram on page 13 when replacing the carrier liners.

1. Remove the CC Carrier (please see the drive tape removal and install instructions on page 11).
2. Remove the four phillips flat screws and the ten phillips truss screws that hold the carrier backcover and cover with a medium phillips screwdriver. Remove the covers.
3. Use an 11/32 nutdriver and a medium phillips screwdriver and remove the #8-32 phillips truss screw that holds the hold down spring in place. Remove the hold down spring.
4. Use a pair of pliers and remove the door close spring from the bail.
5. Use the .050 allen wrench provided and remove the outside bail collar.
6. Remove the bail
7. Install the CC liner top and bottom over the old liner. Make sure you mark and punch out the holes in the liner for the bail to go through.

8. Install the CC liner back over the old liner.
9. Install the CC liner side over the old liner. Mark and punch out the hole for the CC hold down spring bolt.
10. Reinstall the bail the same way as you removed it in steps 5 and 6.
11. Reinstall the door close spring to the bail.
12. Reinstall the hold down spring the same way as you removed it in step 3.
13. Mount the Carrier Cover the same way as you removed them in step 2. Use the screws provided if needed.
14. Reattach the CC Carrier (please see the drive tape removal and install instructions on page 11).
15. Run the unit to check for proper operation.

CC Carrier Door Kit 04221071

Parts List

Part #	Description	Qty.
00687011	CC Car Manual	1
04062023	CC Door Arm 'A'	1
04062033	CC Door Arm 'B'	1
04063011	Door Close Spring	1
04066012	Molded CC Door Pivot	2
04097011	Door Closes Label	1
04098011	Door Opens Label	1
04115011	Clear Grease 4cc Tube	1
92015007	#6-32 Acorn Nut	4
92042123	#6-32 x 1/4 Phillips Flathead Screw	4
92042723	#6-32 x 1/4 Phillips Truss Head	10
93005063	#8-32 Thin Nylon Locking Nut	1
94005005	#10-32 Thin Nylon Locking Nut	2
94006004	3/16 Aluminum Backup Washer	2
94039233	3/16 x 3/16 Stripper Bolt	1
93044623	#8-32 x 1/4" Phil Pan Self Tapping	11

Tools Needed

Medium Phillips Screwdriver
3/32 Allen Wrench
11/32 Nutdriver
3/8 Nutdriver
5/16 Nutdriver
Pliers

CC Carrier Door Repair Kit Replacement Instructions

Please refer to the diagram on Page 13 when repairing the CC Carrier Door.

1. Remove the four phillips flat head screws and the ten phillips truss screws that hold the carrier cover and back cover with a medium phillips screwdriver. Remove the covers.
2. Use a pair of pliers and remove the door close spring. Discard the spring.
3. Remove the two #10-32 locking nuts that hold the door arms to the carrier chassis. Remove the two 3/16 aluminum backup washers. Discard the old nuts and washers.
4. Spread apart the door arms slightly and remove from the carrier chassis.

5. Remove the two door pivots and discard.
6. Use a 3/32 allen wrench and an 11/32 nutdriver and remove the 3/16 stripper bolt that attaches the cc long cable to the door arm. Discard the old stripper bolt and nut.
7. Use a 5/16 nutdriver and remove the four #6-32 acorn nuts that hold the door arms to the carrier door. Discard the old door arms and acorn nuts.
8. Mount the new door arms with the acorn nuts provided the same way as you removed them in step 7. Please be sure you have the correct door arm on the correct side.
9. Reattach the cc long cable with the 3/16 stripper bolt and #8-32 nylon locking nut provided the same way as you removed it in step 6.
10. Slide the two door pivots provided on the door posts.
11. Use the clear grease provided and put a small bead around the top of each door pivot.
12. Slide the carrier door in place the same way as you removed it in step 4.
13. Use the clear grease provided and put a small bead on the door arms where the door pivot comes through.
14. Put a 3/16 aluminum backup washer provided over each door pivot.
15. Use a 3/8 nutdriver and put a #10-32 thin nylon locking nut on each carrier post. Do not tighten the nut too tight. The carrier door needs to open and close freely.
16. Reattach the door close spring provided.
17. Activate the carrier latch to make sure the door opens and closes freely and adjust if needed.
18. Mount the Carrier backcover and install the same way as you removed it in step 1. Use the screws provided if needed.
19. Run the unit to check for proper operation.

Drive Tape Removal and Install Instructions

Caution

Do not use tape to hold the brake release button down for long periods of time. This will cause overheating and possible damage to the brake.

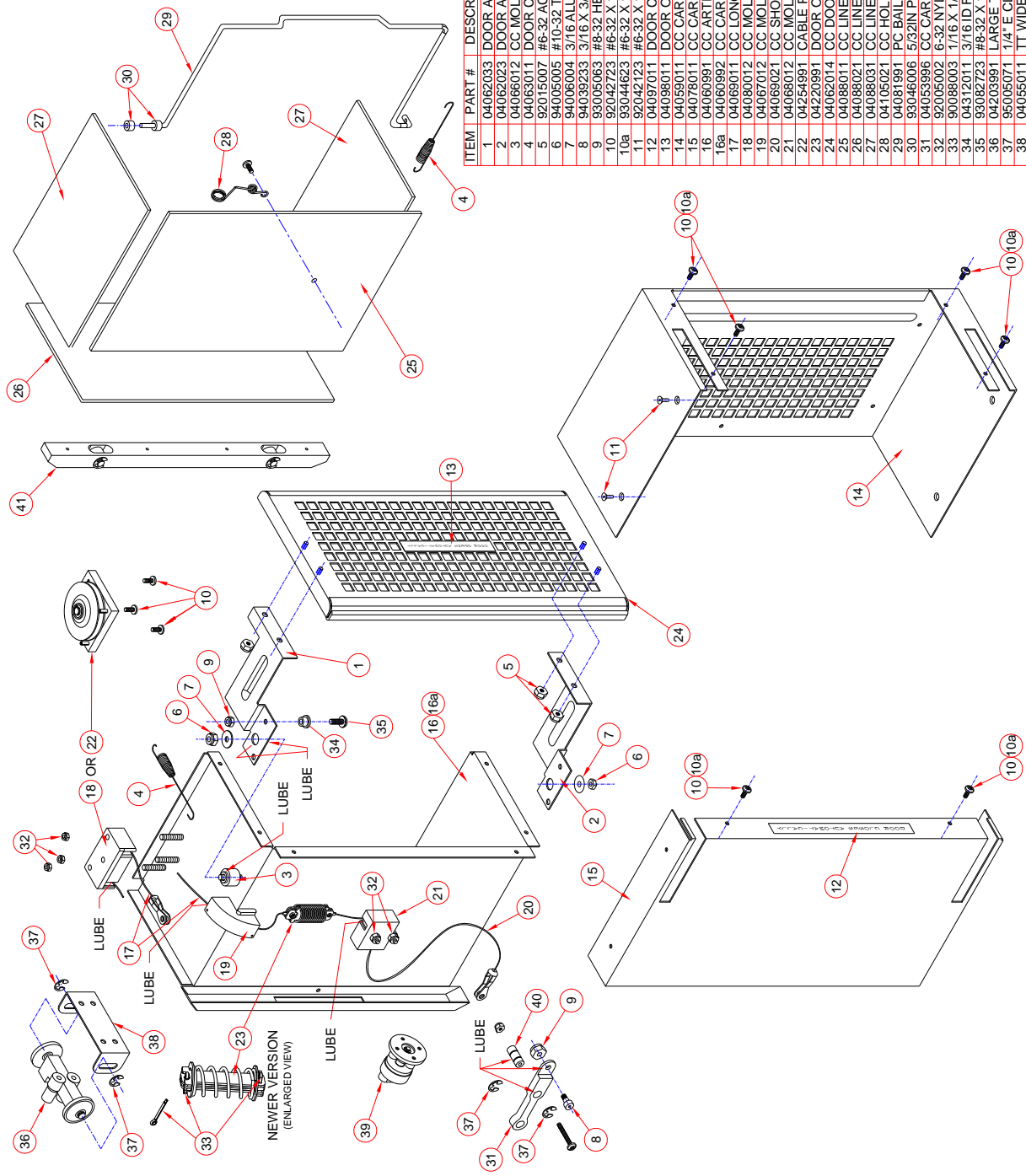
Removal of the Drive Tape

1. Remove the flat head screws that hold the speaker panel to the customer vertical tube. The speaker and panel can hang by the speaker lead.
2. Go inside and send the carrier to the car position outside. Turn the power off on the inside control assembly.
3. Open the right door of the inside vertical standoff. The door is hinged; removing the two screws will allow the door to open.
4. On the front side of the tube, insert a screwdriver into a slot in the drive tape.
5. Press and hold the brake release button on the brake board.
6. Push up on the screwdriver pushing the tape up. Observe the carrier outside as it lowers. Do not let the carrier hit the island. Do this until the drive tape disengages the drive sprocket.
7. Go outside and remove the carrier from the drive tape with a medium phillips screwdriver. Leave the screws in the drive tape so you know how to attach the carrier when the repair is completed.

Install of the Drive Tape

1. Mount the carrier back on the drive tape. Make sure that the tape block holes are not stripped. If they are, consult the factory for new tape blocks.
2. Feed the drive tape back into the unit until you feel the drive tape stop.
3. Go inside to the inside vertical and press and hold the brake release button.

4. Insert a screwdriver into a slot of the drive tape.
5. Push down on the screwdriver feeding the tape around the drive sprocket. Continue to do this until the carrier is resting on the stabilizers outside. Be careful that the carrier is not caught on the speaker lead.
6. Turn the power back on and recall the carrier.
7. Run the unit and observe for proper operation. Note: if the carrier started out above the stop switches, it will not shift into high speed. Simply run the carrier again and it should shift speeds.
8. Adjust the shift points if needed.
9. Replace the speaker panel on the customer vertical.



NOTE - QUANTITY IN KIT MAY VARY

ITEM #	PART #	DESCRIPTION	QTY
1	04062033	DOOR ARM 'B'	1
2	04062023	DOOR ARM 'A'	1
3	04066012	CC MOLDED DOOR PIVOT	2
4	04063011	DOOR CLOSE SPRING	2
5	92015007	#6-32 ACORN NUT	4
6	94005005	#10-32 THIN NYLON LOCKING NUT	2
7	94006004	3/16 ALUMINUM BACKUP WASHER	2
8	94039233	3/16 X 3/16 STRIPPER BOLT	1
9	93005063	#8-32 HEX THIN NYLON LOCKING NUT	2
10	92042723	#6-32 X 1/4 TRUSS HEAD SCREW	14
10a	93044623	#6-32 X 1/4 TRUSS HEAD SCREW	11
11	92042123	#6-32 X 1/4 PHILIPS FLATHEAD SCREW	4
12	04097011	DOOR CLOSES LABEL	1
13	04098011	DOOR OPENS LABEL	1
14	04078011	CC CARRIER COVER	1
15	04069091	CC CAR BACKCOVER	1
16	04069092	CC ARTICULATED CAR CHASSIS	1
16a	04069011	CC CAR CHASSIS	1
17	04069011	CC LONG CABLE	1
18	04069012	CC MOLDED CABLE BLOCK 'C'	1
19	04067012	CC MOLDED CABLE BLOCK 'A'	1
20	04068021	CC SHORT CABLE	1
21	04068012	CC MOLDED CABLE BLOCK B	1
22	04254991	CABLE PULLEY RETROFIT	1
23	04220991	DOOR OPEN SPRING ASSEMBLY	1
24	04062014	CC DOOR W/ROUNDED CORNERS	1
25	04088011	CC LINER SIDE	1
26	04088021	CC LINER BACK	1
27	04088031	CC LINER TOP AND BOTTOM	2
28	04105021	CC HOLD DOWN SPRING	1
29	04081991	PC BAIL WITH HOLES	1
30	93046006	5/32 IN PLATED BRASS COLLAR	2
31	04053996	CC CARRIER LATCH	1
32	92005002	6-32 NYLON LOCKING NUT	5
33	90089003	1/16 X 1/2 CC COTTER PIN	2
34	04312011	3/16 ID FLANGED BUSHING	1
35	93082723	#8-32 X 1/2 PHILIPS TRUSS SCREW SS	1
36	04203991	LARGE TAPE BLOCK KIT	1
37	95005071	1/4" E CLIP ZINC	4
38	04055011	TT WIDE TAPE BLOCK BRACKET	1
39	04189991	SPHERICAL TAPE BLOCK ASSEMBLY	1
40	04095022	CC CARRIER LATCH BUSHING	1
41	04241991	CC ROLLER RUNNER ASSEMBLY	1

