
Bavis Replacement Contactor

Manual

E. F. Bavis & Associates, Inc.

201 Grandin Road
Maineville, Ohio 45039
(513) 677-0500

Bavis Replacement Contactor

Table of Contents

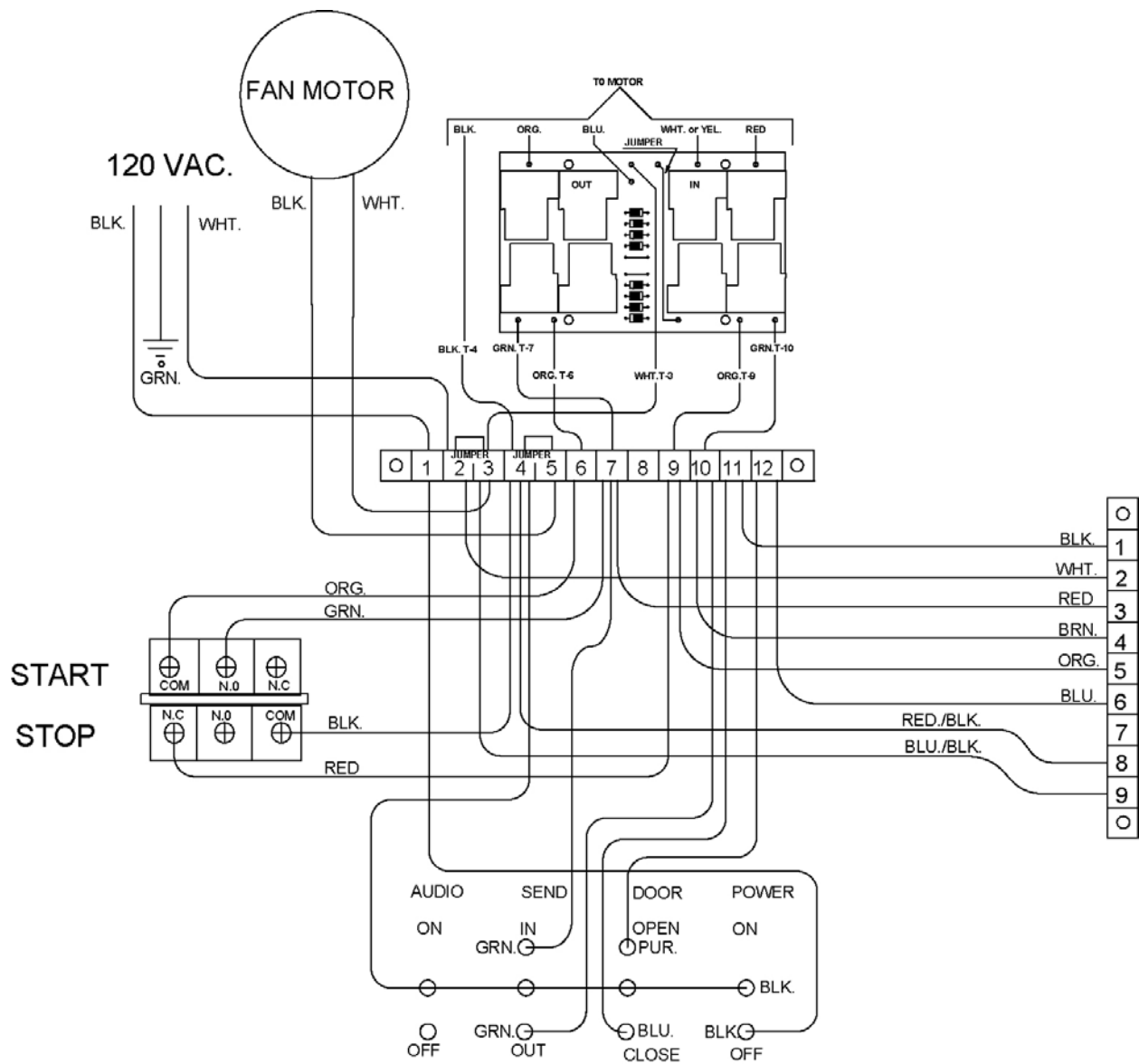
Installation Instructions.....	1
Autoveyor™ II Wiring Diagram Teller End	2
Autoveyor™ II Wiring Diagram Customer End.....	3
Replacement Contactor Wiring.....	4

Installation Instructions

We regret that the contactor supplied to us by Telemecanique for over 15 years is no longer being made with the same quality as it has been in the past. By demand, we have created a printed wiring board level replacement contactor for the AV II. This product has the quality that we are accustomed to supplying. Being a printed wiring board level product, it comes ready to install with leads, which already have the proper termination. There are no jumpers to install and a wiring diagram has been provided to insure a quick, trouble free installation. NOTE: THIS CONTACTOR IS NOT INTENDED FOR USE ON LANES WITH MORE THAN ONE MOTOR. ON LANES WITH MORE THAN ONE MOTOR, TWO CONTACTORS WILL NEED TO BE USED IN PARALLEL.

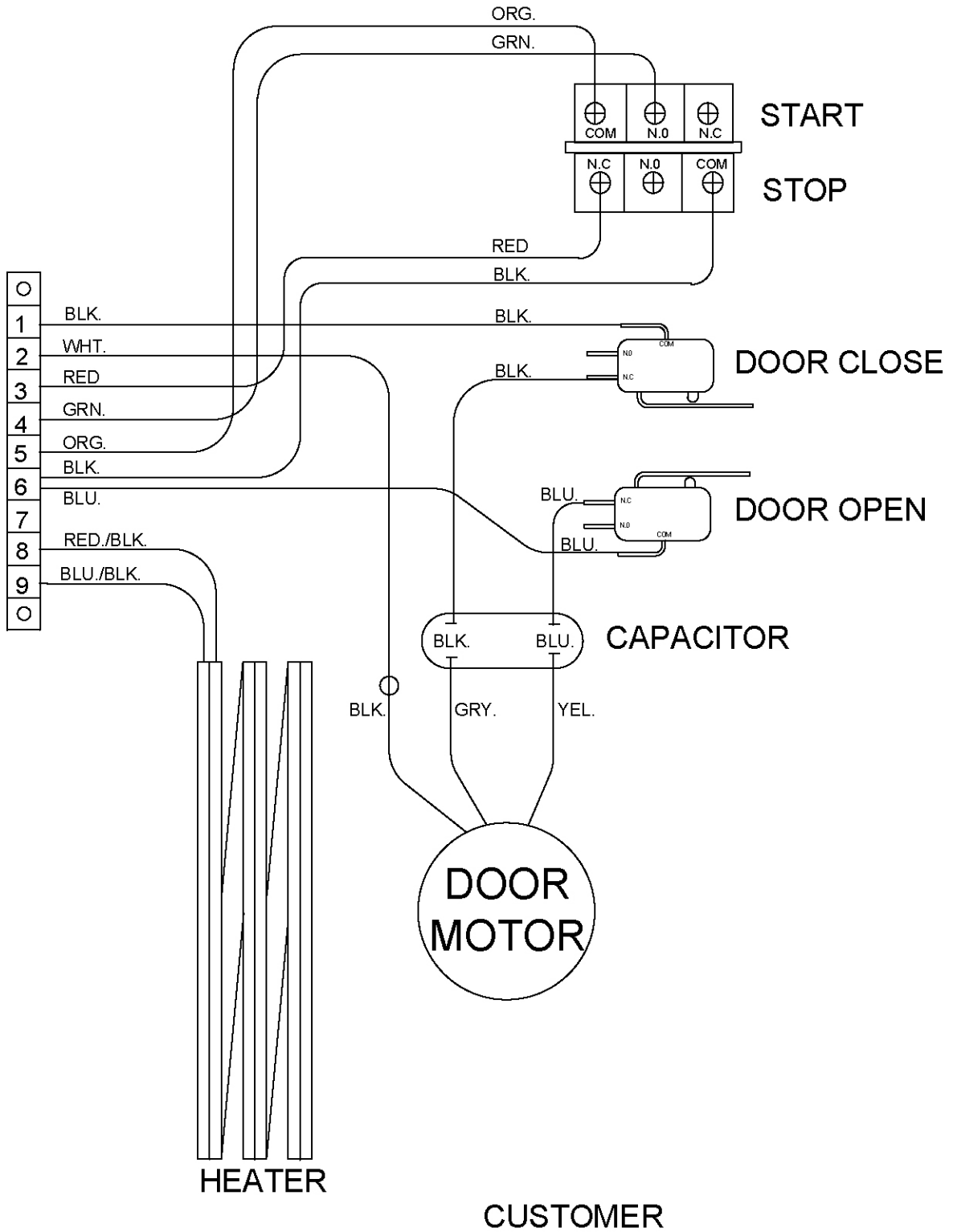
1. Disconnect power.
2. Remove the black ABS formed cover. NOTE: You can remove all 6 screws then rotate the cover 180 degrees and reattach it with 3 of the screws.
3. Remove the 4 motor leads (Red, Yellow or White, Blue, and Orange) from the top of the existing contactor.
4. Remove the 5 leads (White, 2 Green, and 2 Orange) from the terminal barrier going to the contactor.
5. Remove the existing contactor complete with its jumper wires.
6. Install the threaded end of the 4 nylon posts into the tapped holes of the steel control back-plate that previously were used to mount the existing contactor. (NOTE: If the holes are too big, install the 6-32 nuts supplied, behind the mount plate to secure the posts.)
7. Mount the replacement Bavis contactor onto the 4 male protrusions of the nylon posts. NOTE: The red wire should be on top.
8. Connect the 4 motor leads with female quick-slide connectors to the appropriate 4 fully insulated male flying leads from the replacement contactor. NOTE: The white lead of the replacement contactor may have a white or yellow mating lead.
9. Connect the 5 leads with female quick-slide connectors from the replacement contactor to the appropriate positions, as indicated by the schematic provided, to the terminal barrier.
10. Reconnect power.
11. Test for proper operation. If you experience difficulties, please give us a call at (513) 677-0500.
12. Replace the black ABS formed cover.

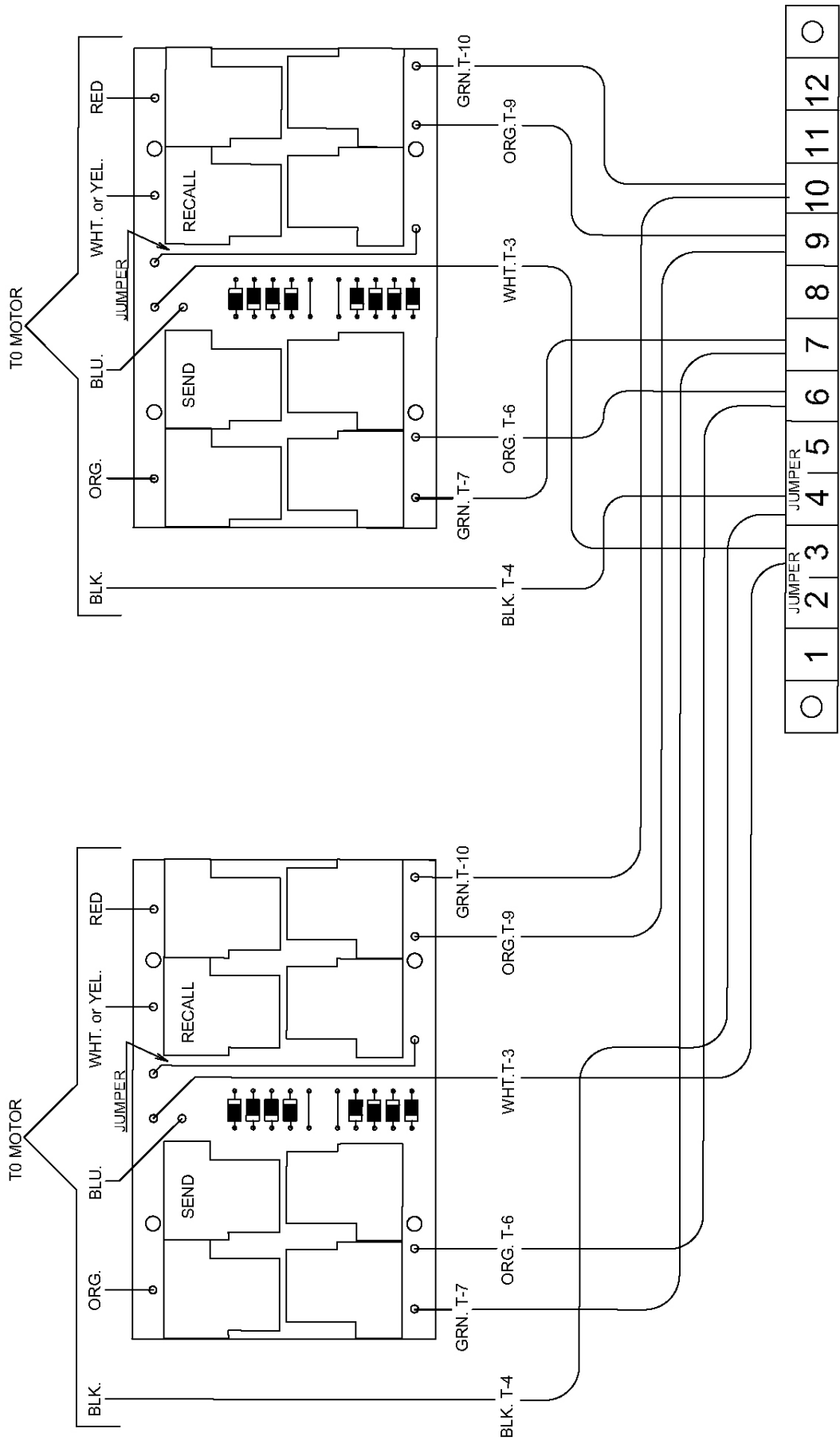
Autoveyor™ II Wiring Diagram



TELLER

AV 2 WIRING





REPLACEMENT CONTACTOR WIRING

