



201 Grandin Road
Maineville, Ohio 45039
(513) 677-0500

Wireless Mier Vehicle Detection System

Meir Vehicle Detector Manual

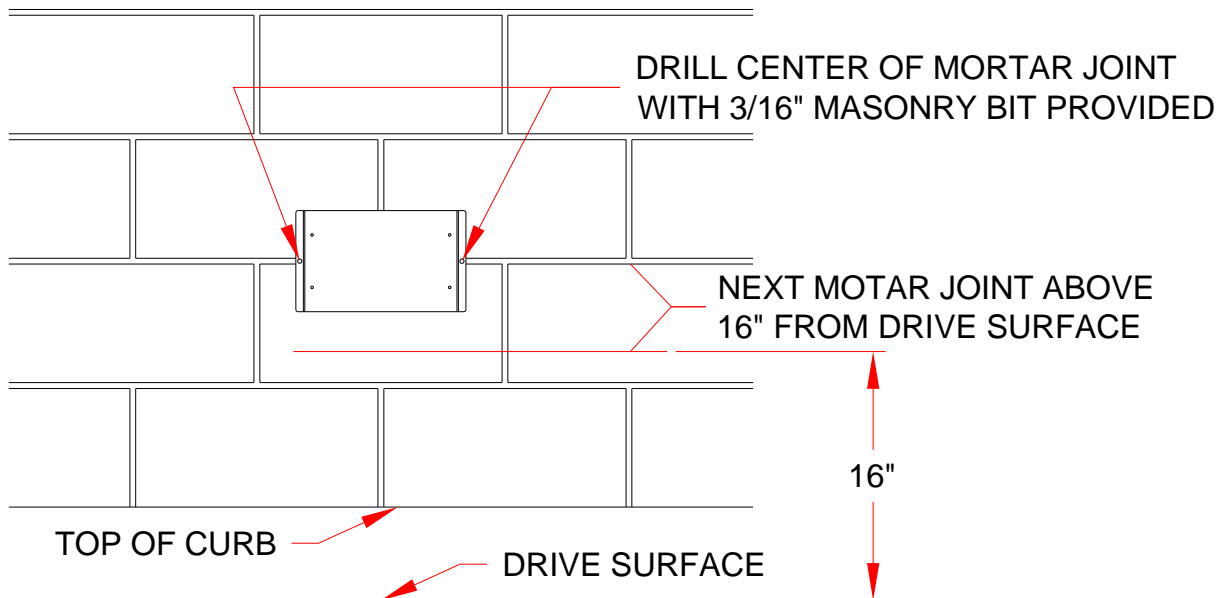
Table of Contents

General Notes	1
Wall Mounted Sensor Location	1
Sensor Location – Plan View.....	2
System Setup and Sensitivity Adjustment.....	3
Mier Technical Support	3

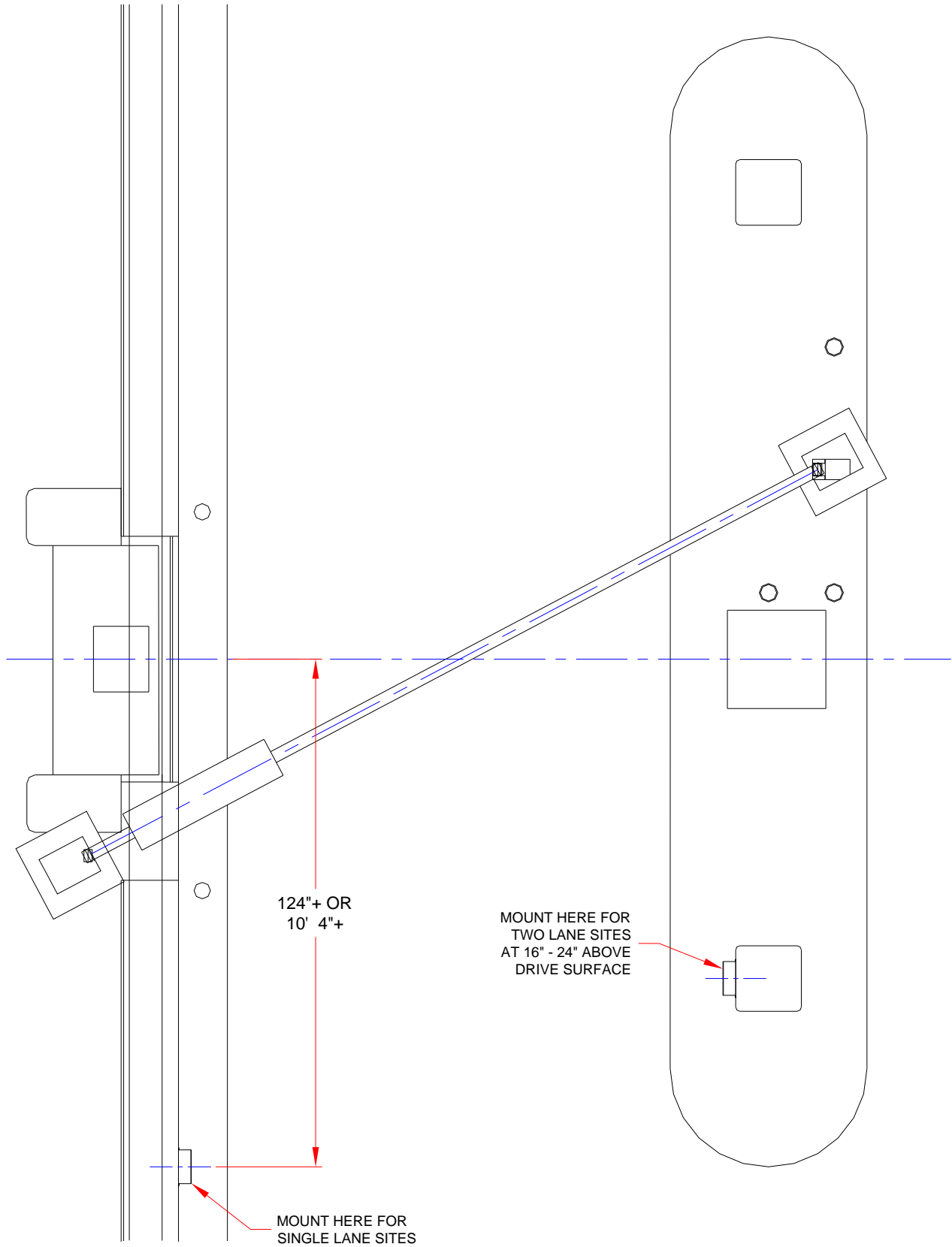
GENERAL NOTES

- The Sensor must be securely mounted to a ridged structure. Any movement of the sensor will cause “False Tripping”.
- The Sensor can detect up to 14’ in every direction if sensitivity is set at maximum.
- Vehicles must be moving at more than 5 mph.
- The Sensor should be mounted in a horizontal orientation, approximately 16” to 24” above the drive surface.
- The Sensor uses (2) AA batteries. Alkaline batteries will last about 1 year, Lithium may last up to 3 - 5 years.
- The Control Panel/Receiver can be located up to 500 feet from sensor.
- The Control Panel/Receiver has its own power pack, and requires a 110Vac outlet.
- There is a Volume adjustment for the detection tone on the Control Panel/Receiver.

Wall Mounted Sensor Location

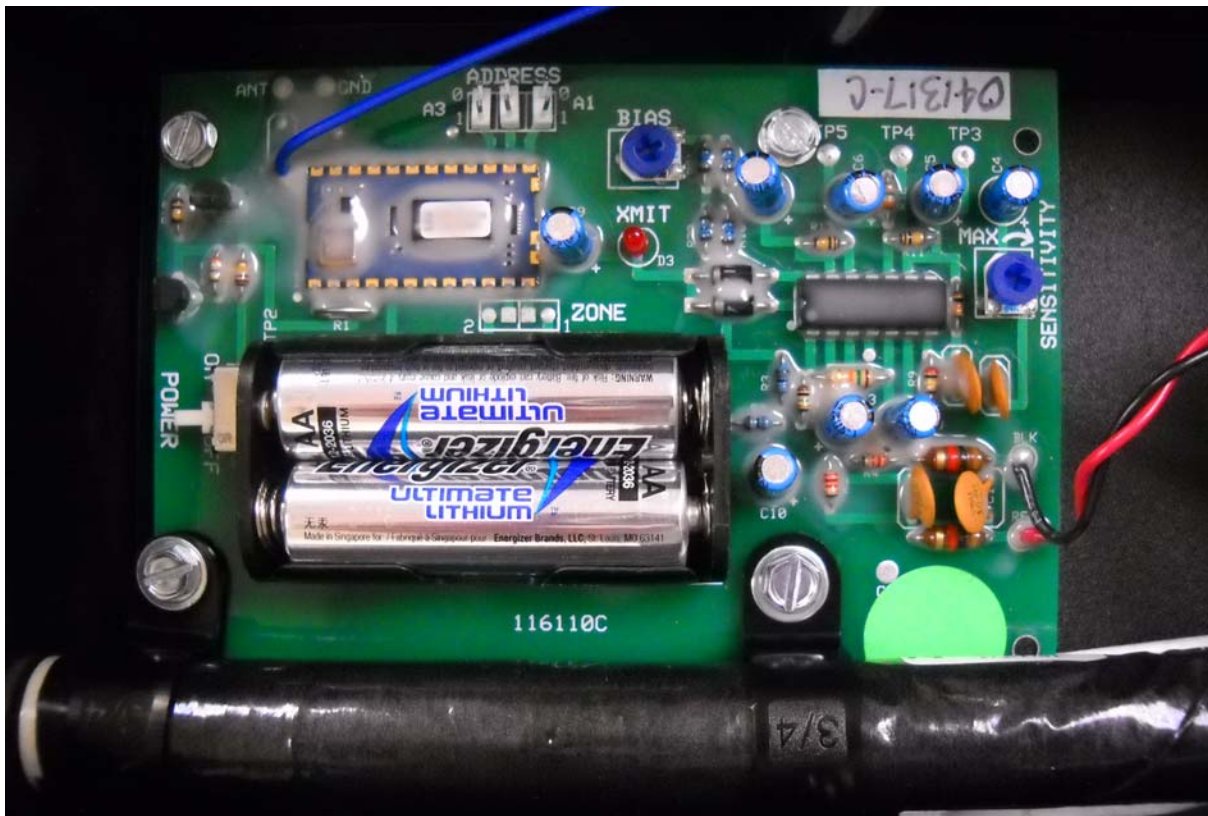


Sensor Location – Plan View



System Setup and Sensitivity Adjustment

1. After mounting the sensor unit, remove the cover, install the batteries, and turn POWER switch to ON.
2. Position the Control Panel/Receiver unit and connect to power and turn ON.
3. Test system with a vehicle moving through the lane(s) at approximately 5 mph. The XMIT LED inside of the Sensor enclosure will light, and a tone will be emitted from the Control Panel/Receiver unit.
4. Turn the Blue potentiometer near the right edge of the board, marked SENSITIVITY, clockwise to increase sensitivity and counter-clockwise to decrease sensitivity. Factory setting is for approximately 13 ft. (Approximate ranges for percentage of potentiometer turn, Max – 14 ft., $\frac{3}{4}$ - 11 ft., $\frac{1}{2}$ - 9 ft., Min – 7 ft.). (**Note: DO NOT ADJUST THE “BIAS” POTENTIOMETER.**)
5. Check that the gasket is in place and in good condition, and then secure the lid to the enclosure.



Mier Products' Drive-Alert Technical Support

Mier Products, Inc. provides free telephone and email technical support for all of our Drive-Alert vehicle detection systems. Call us at **800-473-0213** between the hours of 8:00 am and 5:00 pm EST, send an email to **info@mierproducts.com**, or download our Cut-Sheets, Instruction Manuals, or FAQs from the Mier website:

www.mierproducts.com

