



201 Grandin Road
Maineville, Ohio 45039
(513) 677-0500

All-In-One Window Drawer Replacement Manual

Copyright 2018 E. F. Bavis & Associates, Inc.
All Right Reserved

Revised: 03/07/2018
PN: 00900286

Walgreen's Transaction Drawer Replacement Manual

Table of Contents

Tools Needed & Installation Note	1
Old Drawer Removal.....	2
Installing the New Drawer Assembly	4

Tools Needed

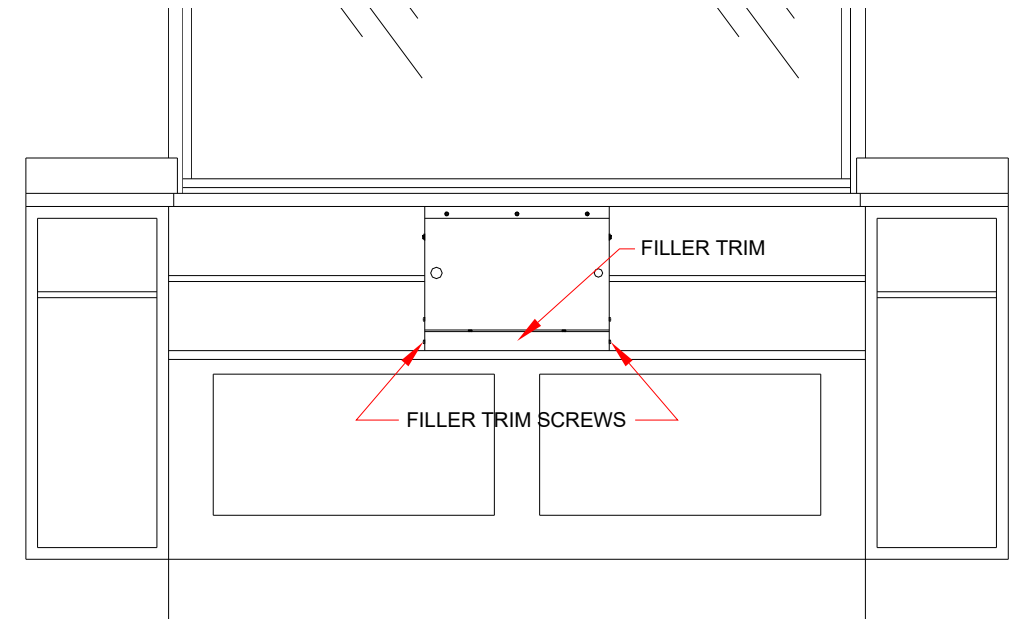
Razor Knife
7/16" Deep-well Socket & Ratchet or Wrench
1/4" Socket & Ratchet or Wrench
Flat Bladed and Phillips Screwdriver
1/8" & 3/16" Drill Bits & Drill (Supplied)
Caulking Gun
Black Exterior Caulk (Supplied)

Installation Note: Due to the size and weight of the drawer assembly, (approximately 105 lbs.), it is recommended that (2) Service Technicians perform the drawer replacement. For most of this process, there will need to be one Service Technician inside of the building and one outside.

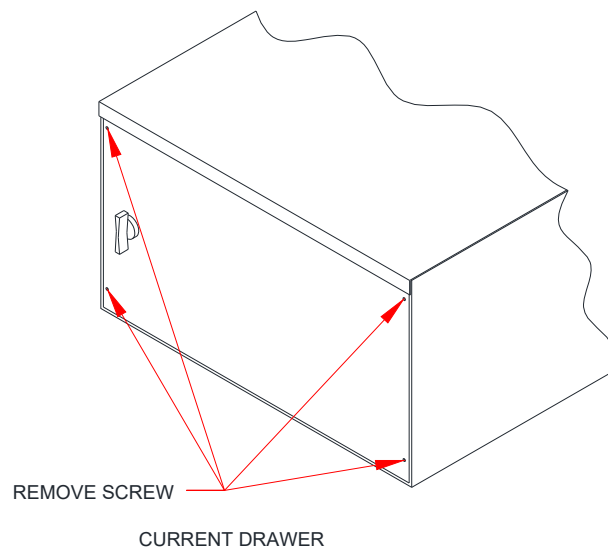
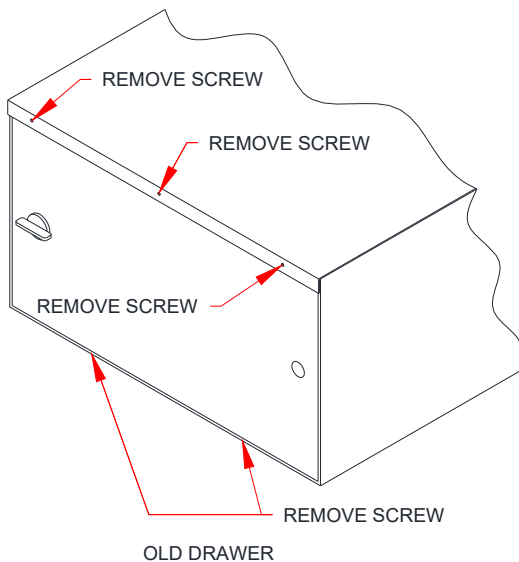
The instructions in this manual are written for all of the All-In-One window systems. Some steps may be different than shown, or not needed for your particular window model.

Old Drawer Removal

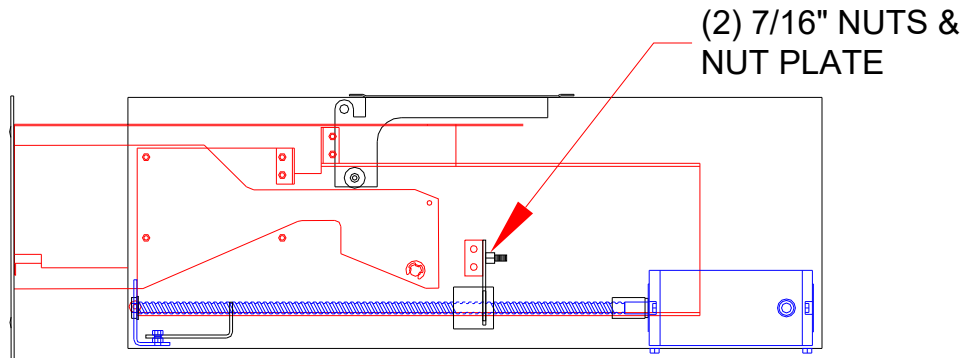
1. Remove power from the drawer by un-plugging the power cord from the wall outlet located under the drawer, behind the knee-space cabinet panel.
2. Remove the filler trim that fills in between the bottom of the drawer housing and the lower shelf by removing the (2) screws securing it to the drawer support arms. (WG & 64in AW Jr window models only.)



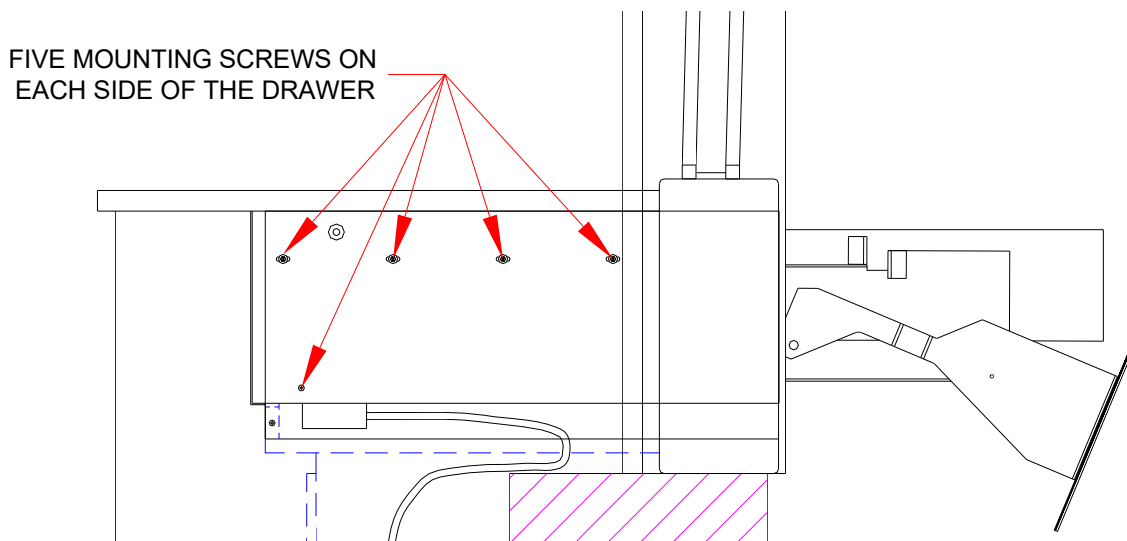
3. Remove the (5) screws securing the inside access panel, and then remove the panel.



4. Unplug the control button panel from the control cable, and pull the control cable back into the drawer housing, (you may need to either cut the cable or remove the black connector housing from the push button end of the cable).
5. With the outside Tech holding the Red Bin, remove the (2) 7/16" nuts attaching the "Nut Plate" to the cross bar of the Red Bin, and remove the Nut Plate.



6. The outside Tech can now remove the Red Bin assembly with customer door. (The inside Tech may want to put the inside access panel back in place and secure with 1 or 2 screw so it will not be dangling in the way.)
7. Using a razor knife, the outside Tech can now cut the caulking that seals the drawer housing to the window frame.
8. The inside Tech can now remove the (10) screws, (five in the support arms on each side of the drawer), that attach the drawer to the window assembly. (Note: It is best to start with the screws that are closest to the window frame, and then work your way back towards the inside access panel.)

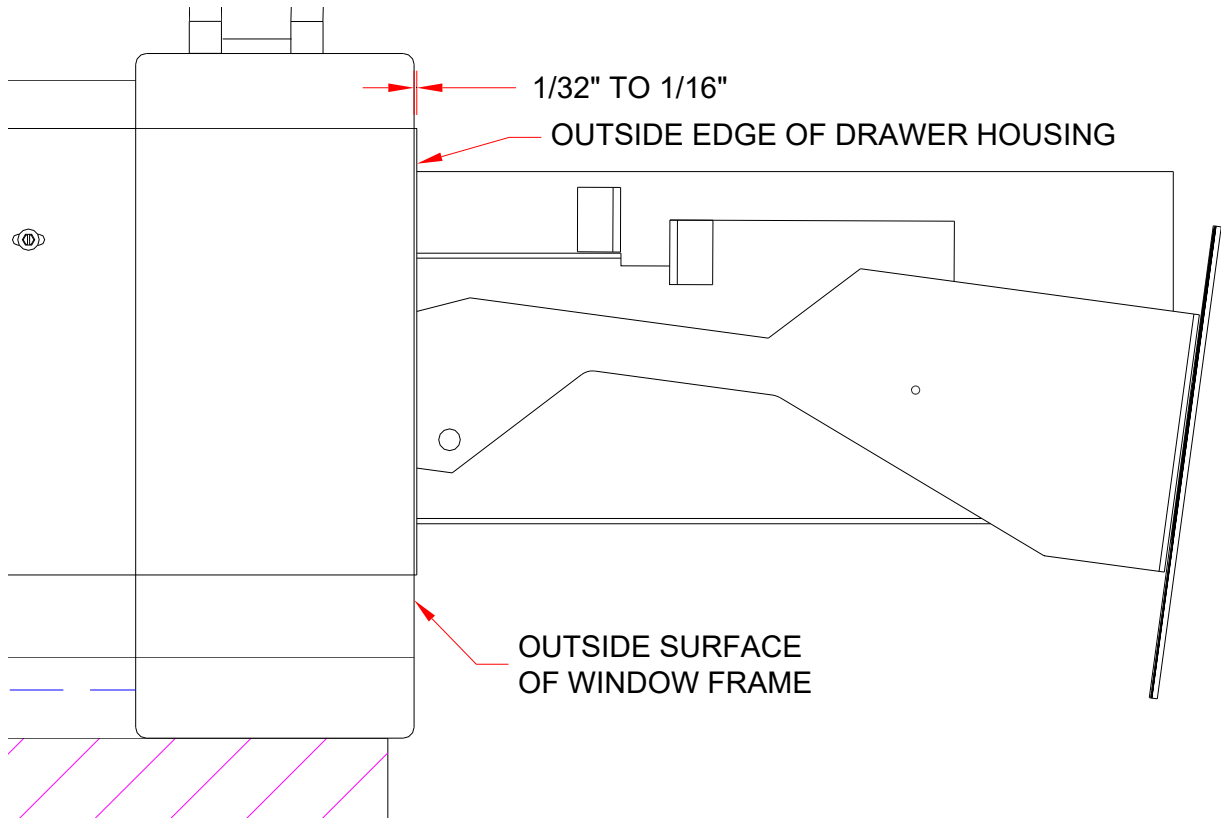


9. With the screws removed and the caulking cut, the drawer assembly should now be loose. Let the inside portion of the drawer drop down enough that the inside door will clear the bottom of the counter top, and pull the drawer into the building. (The outside Tech can help by grabbing the flange at the top of the housing, and lift up while pushing the drawer assembly into the building.)
10. Remove the power cord from the old drawer and then move the old drawer housing out of the work area.

Installing the New Drawer Assembly.

1. Remove the new drawer from its packaging.
2. Remove the inside access panel, and remove the (2) 7/16” nuts and the Nut Plate, then remove the Red Bin from the drawer housing. (Note: The runners on the Red Bin have been greased, be careful on how you set it down so this grease is not contaminated.)
3. While the inside Tech is installing the power cord on the new drawer and the push button wires into the countertop, the outside Tech can clean-up the drawer opening in the window frame, and secure the microphone wires in the window frame, up and out of the way with masking tape or some other light duty fastener. (It is recommended that the inside Tech put the inside access panel back in place and secure with 1 or 2 screw so it will not be dangling in the way.)
4. With the outside Tech grabbing the flange at the top of the housing and guiding the drawer into the window frame opening, slide the drawer into place.
5. The inside Tech can now install the (8) 8-32 x 3/8” thread forming screws and 3/16” ID flat washers provided, through the support arm slots and into the mounting holes of the drawer housing. Do not tighten yet.

6. Position the outside edge of the drawer housing so it protrudes through the window frame evenly, between 1/32" to 1/16". It might be necessary to loosen the screws that fasten the top of the support arms to the bottom of the counter top to gain enough adjustment.



7. Once the drawer is in position, tighten the (8) mounting screws.
8. The outside Tech should now seal the drawer housing to the window frame with the caulk provided. Use as thin of a seam as possible to shorten the cure time. (Until the caulk has set-up sufficiently, be careful that the customer door does not close fully and make contact with the soft caulking.)
9. Using the lower mounting holes in the support arms as a drill guide, drill a 3/16" hole just through the 11 gauge (1/8") steel of the drawer housing on both sides of the drawer.
10. With the 1/8" bit , drill a 5/8" to 3/4" deep pilot hole into the plastic track, and use the #8 x 1 SMS to fasten the arm to the drawer housing.

11. Remove the inside access panel, if temporarily installed, and pass the push button control cable through the hole in the drawer and to the push button assembly
12. With the Acetal Nut about 2” to 3” away from the motor, install the Red Bin back into the drawer housing and loosely attach the “Nut Plate” to the cross bar of the Red Bin. (Be sure the customer door gasket does not contact the caulking if still soft.)
13. Center the Red Bin in the housing by sliding it all the way to the left, then all the way to the right, and then back to what appears to be the center of the two extremes. Straighten the Nut Plate so it is vertical and then tighten the (2) nuts.
14. Before testing operation, re-install the inside access panel, and turn the lock to the “Locked” position. This will keep the Red Bin from coming all the way in and prevent the door from contacting the caulking.
15. Route the power cable under the drawer to the power outlet, and reinstall the filler trim if so equipped and secure all wires and cables with wire ties provided.
16. Test drawer operation and adjust as necessary.

If technical assistance is needed, contact E.F. Bavis & Assoc., (800-937-3322), and ask for either Window or Transaction Drawer technical support.

