



201 Grandin Road
Maineville, Ohio 45039
(513) 677-0500

G-CAR Magnetic Over Run Instructions

Table of Contents

Bill of Materials	1
Installation Instructions.....	2
G Car Magnetic Over Run Diagram	3
Parts Description.....	4
GC Door Adjustment Procedure.....	5
GC Pushrod Guide Installation Diagram	6

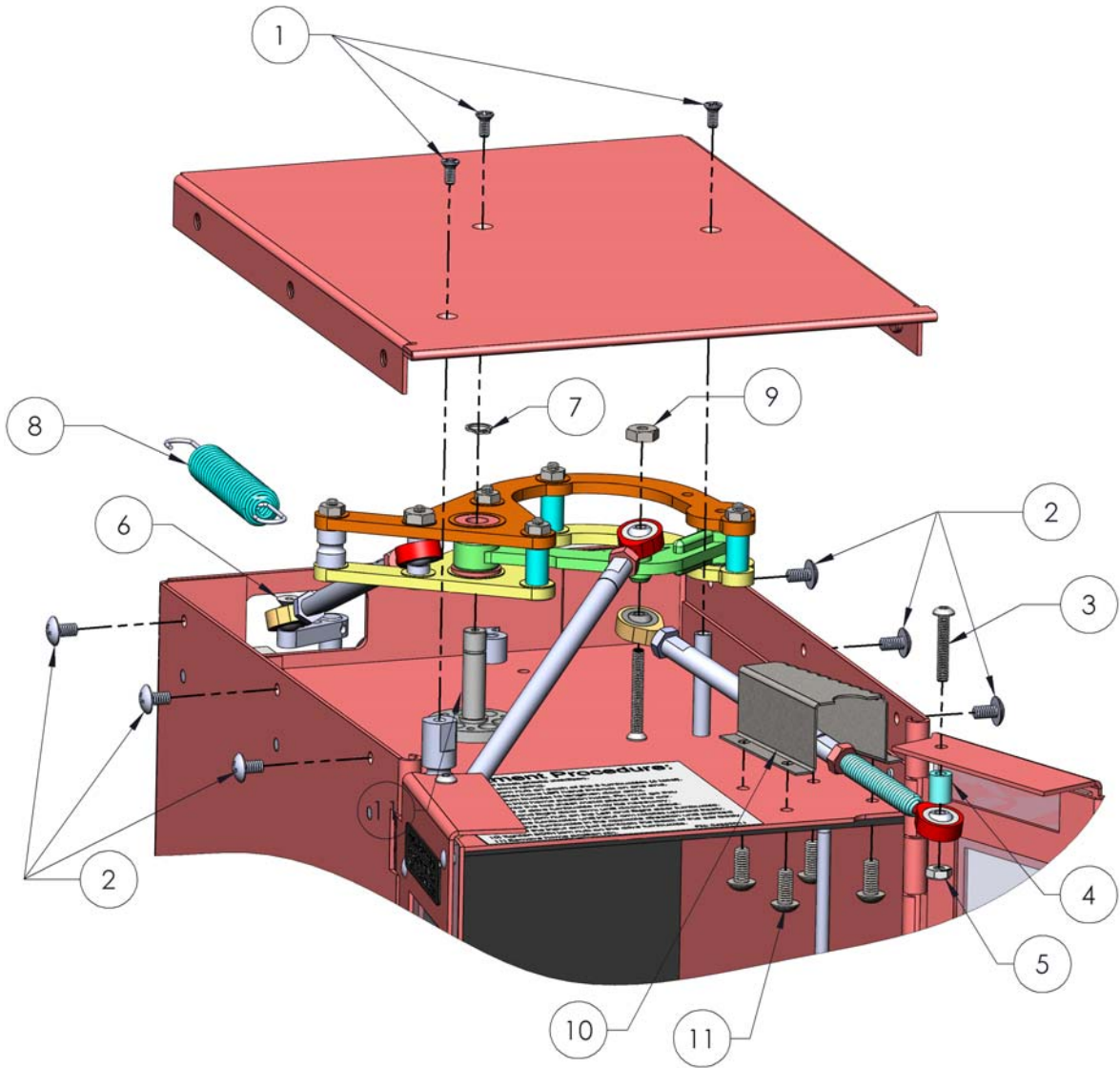
Bill of Materials

PART NUMBER	DESCRIPTION	QUANTITY
00900241	GC MAGNETIC OVER RUN MANUAL	1
04327191	GC MAGNETIC OVER RUN ASSEMBLY	1
04348011	5-40 NYLON LOCKING NUT	2
04348101	5-40 X 1/2 PHILLIP FLAT MS	1
04348151	5-40 X 3/4 SOCKET BUTTON SCREW	2
04355011	6 X 8 X M3 UNTHREADED SPACER	2
95005072	1/4 RETAINING RING	2
04388011	GUIDE DRILL FIXTURE	1
04395011	GC PUSHROD GUIDE	1
93062933	8-32 X 3/8 BUTTON SOCKET CAP SCREW SS	4
92042723	6-32 X 1/4 PHILLIP TRUSS MS SS	6
91062129	4-40 X 3/8 PHILLIP FLAT MS SS	3

Installation Instructions

1. Send the car to the outside (customer) position.
 - A. This entire installation procedure may be easier if the car is removed from the machine. This is accomplished by removing the outside speaker plate, and releasing the brake while feeding the tape out of the machine.
2. Remove the three # 4-40 x 3/8" Flat Head Machine Screws located on the very top of the car. #1 on page 3. (#1 Phillips bit works best.)
3. Remove the six # 6-32 x 1/4" Truss Head Machine Screws located on the top sides of the car. #2 on page 3. (#2 Phillips bit works best.)
4. Remove the GC End Cover.
5. Remove the GC Door Close Spring. #8 on page 3.
6. Remove the 1/4" Retaining Ring holding the old Magnetic Over Run Assembly in place using retaining ring pliers. #7 on page 3
7. Remove the # 5-40 x 3/4" Button Socket Head Machine Screw, 5-40 nut, and spacer that connect the left and right pushrod assemblies to the doors. #3, #4, #5 on page 3
8. Remove the 5-40 x 1/2 Phillip Flat Screw that connects the Master Pushrod to the Drive Assembly. #6 on page 3
9. Raise up on the Magnetic Over Run Assembly and remove. #9 on page 3
10. If you do not have a right door spring pushrod guide, install the one provided as follows:
 - A. Use the Guide Drill Fixture provided to drill the four holes for mounting the guide. Use an 11/64 drill bit for this. Make sure that the Drill Fixture is tight to the Chassis Door Hinge. See the diagram on page 6
 - B. Mount the guide with the four 8-32 x 3/8 button socket Screws provided. Go up through the liner and chassis and into the tapped holes in the Pushrod Guide.
11. Install the new Magnetic Over Run Assembly by reversing steps 5 - 9. Slide the Right Spring Pushrod through the Pushrod Guide before you lower the Over Run Assembly.
12. The G Car doors must then be inspected to ensure they operate properly. If necessary, adjust the door action following the procedure. See the instructions and diagram on page 5.
13. Reinstall the GC End Cover using the hardware provided in the kit.

G Car Magnetic Over Run Diagram

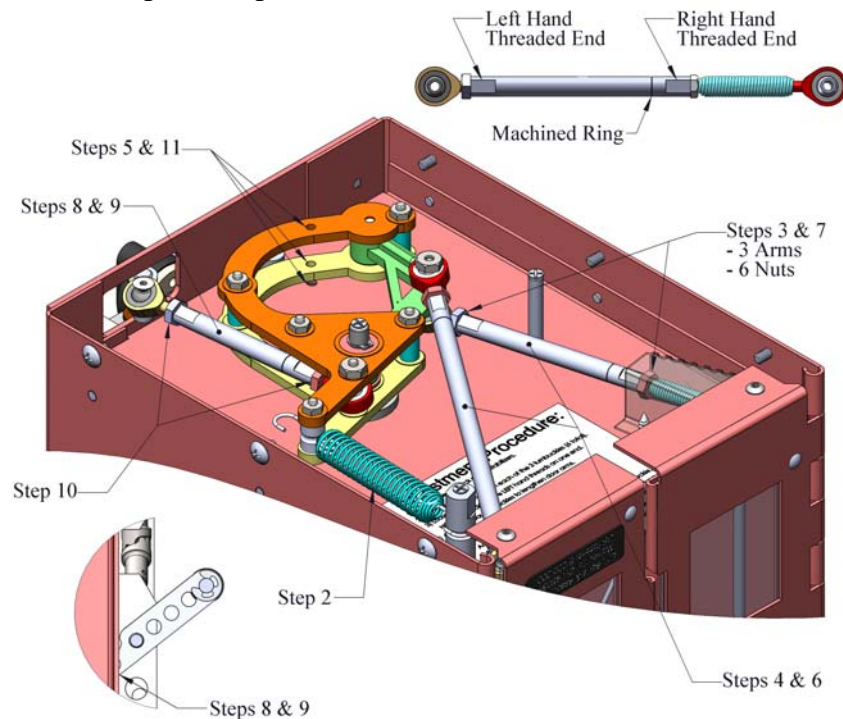


Parts Description

NUMBER	PART #	DESCRIPTION
1	91062129	4-40 X 3/8 PHILLIP FLAT MS SS
2	92042723	6-32 X 1/4 PHILLIP TRUSS MS SS
3	04348151	5-40 X 3/4 SOCKET BUTTON SCREW
4	04355011	6 X 3 X M3 UNTHREADED SPACER
5	05348011	5-40 NYLON LOCKING NUT
6	04348101	5-40 X 1/2 PHILLIP FLAT MS
7	95005072	1/4 RETAINING RING
8	04317021	GC DOOR CLOSE SPRING
9	04327191	GC MAGNETIC OVER RUN ASSEMBLY
10	04395011	GC SS PUSHROD GUIDE
11	93062933	8-32 X 3/8 BUTTON SOCKET CAP SCREW SS

Door Adjustment Procedure

1. Car must be off black plastic stabilizers.
2. Remove door close spring.
3. Loosen BOTH jam nuts on each of the 3 turnbuckles (6 total).
 - a. NOTE: turnbuckles have LEFT hand threads on one end.
4. Rotate door turn buckles to lengthen door arms.
5. Insert 1/8" pin into home position holes. Pin must go thru both arms into the top sheet metal piece of the car.
 - a. Adjustment of drive turnbuckle may be necessary.
6. Adjust Left and Right door arms until doors just close.
7. Tighten BOTH jam nuts on the Left and Right door turnbuckle.
8. Rotate drive turnbuckle until input arm rotates upward freely.
9. Rotate drive turnbuckle in the opposite direction until pointed corner of the input arm just contacts the back of the car body.
10. Tighten BOTH jam nuts on the drive turnbuckle.
11. Remove home position pin.



Positioning the Pushrod Drill Fixture

Seating the Drill Fixture against the door hinges is critical. If it is not, the Pushrod Guide will rub against the Right Pushrod Assembly. Drill the four mounting holes with a 11/64" drill bit. Mount the Pushrod Guide using the four 8-32 x 3/8 Button Socket Cap Screws supplied in the kit, (Item 11 on page 3). These screws can be installed up through the liner and chassis on the interior of the car.

