



201 Grandin Road  
Maineville, Ohio 45039  
(513) 677-0500

# **Small Electric Transaction Drawer Red Bin Heater Kit Manual**



# Small Electric Transaction Drawer™ Heater Installation

## Table of Contents

Parts List.....	1
Tool List.....	1
Installation Procedure .....	2
Heater operation .....	3
Figure #1. ....	4
Figure #2 & #3.....	5
Figure #4. ....	6
Wiring Schematic.....	7
Heater Harness Diagram.....	8



## Parts supplied

Description	Part Number	Qty.
Heater Pad Assembly	00597991	1
Heater Harness B	24004021	1
TD Double Heater Harness	24034011	1
Cable Carrier W/Snap Top	00570032	1
Bin Bracket	00570021	1
XSD Cable Retainer Bracket	30082011	1
Power Supply	24001991	1
1/4-20x5/8 Button Head Bolt	95102933	1
Self-Fastening Wire Tie	01008007	3
Wire Tie W/Eye	01008004	1
8-32x3/8 Hex Washer Head Thread Forming Screw	93064321	4
9/64" Drill Bit	55555011	1
1/2" Black Strain Relief	06926023	1
18-3 Power Cord	00855021	1
Orange Wire Nuts	06975033	3
1/4-20 Nylon Locking Nut	95005002	2
8-32 Nylon Locking Nut	93025001	1

## Tools Needed

5/32 Allen Key  
7/16 Nut Driver  
1/4 Nut Driver  
Drill  
Wire Cutters

## Installation Procedure

Disconnect power from Transaction Drawer. Activate the “In” button and then the “Out” button to discharge the board capacitor. Remove back panel from drawer. There are (3) screws across the top of the panel and the (2) screws across the bottom.

With the red bin fully retracted, remove the (2) 1/4-20 nuts connecting the TD drive nut plate to the Red Bin Assembly. (Note: Use caution when removing drive nut plate as Red Bin will slide completely out of TD Shell)

Remove Red Bin Assembly from TD Shell at Customer end. Clean the bottom of the bin surface where the heater pad will be applied. Windex or similar cleaners work best. Do not use lacquer thinner or other solvents, that may damage powder coat. Mark the location of the heater as shown in Figure #1. Peel the protective paper from the back of the heater (**you may add a contact adhesive to the heating pad**) and press firmly on the bottom of the drawer with the leads orientated as shown in Figure #1.

Use snap in wire ties in the holes provided, on the cross drive bar, and side of red bin as shown in Figure #1 and trim excess off the wire tie.

**(Do not install cable carrier at this time.)**

Reinstall the red bin. Secure the red bin with the nut plate. It is important to properly center the bin using the nut plate. With the plate slightly loose, slide the bin all the way to the right, and the plate all the way to the left. Mark with a Sharpie or pencil. Repeat to the opposite side. Center the nut plate between these marks and tighten the nuts.

### Cable carrier installation

Take the (L) Bracket on the cable carrier and attach it to the left (inside) part of the red bin. Using the 1/4-20 nut and bolt provided. (See Figure #2)

Looping the cable carrier to the front of the red bin, down to the shell, which will bring the (Z) Bracket back to the 1/4-20 stud provided in the XSD shell. (See figure#3)

Fasten with 1/4-20 nylon locking nut provided. **NOTE: When fastening brackets, make sure they are straight and level, to avoid binding of the cable carrier.**

With the cable carrier now installed make the connection between the heater harness and the heater pad. Secure the last snap in wire tie around the connection and trim the excess.

### WIRE ROUTING

There are (3) ways to run the wiring for the XSD Heater kit into the drawer housing, through the Left side, Right side or the Bottom.

\* From the cable carrier the heater harness can neatly be secured with a wire tie to the #8 stud in the XSD shell. (See figure #3) From that point, the second heater cable can be routed through the U channel located at the top, inside of the XSD shell, then to the **Left** or the **Right** and then out the hole in the side of the shell and to the Heater power supply.

\* The heater harness can also be routed from the cable carrier and out the **Bottom** of the shell.

\* All these options are based on the chosen location of the Heater Power Supply

**NOTE: If you choose to mount the Heater Power supply to the XSD, Please make sure it does not interfere with the normal operation of the XSD.**

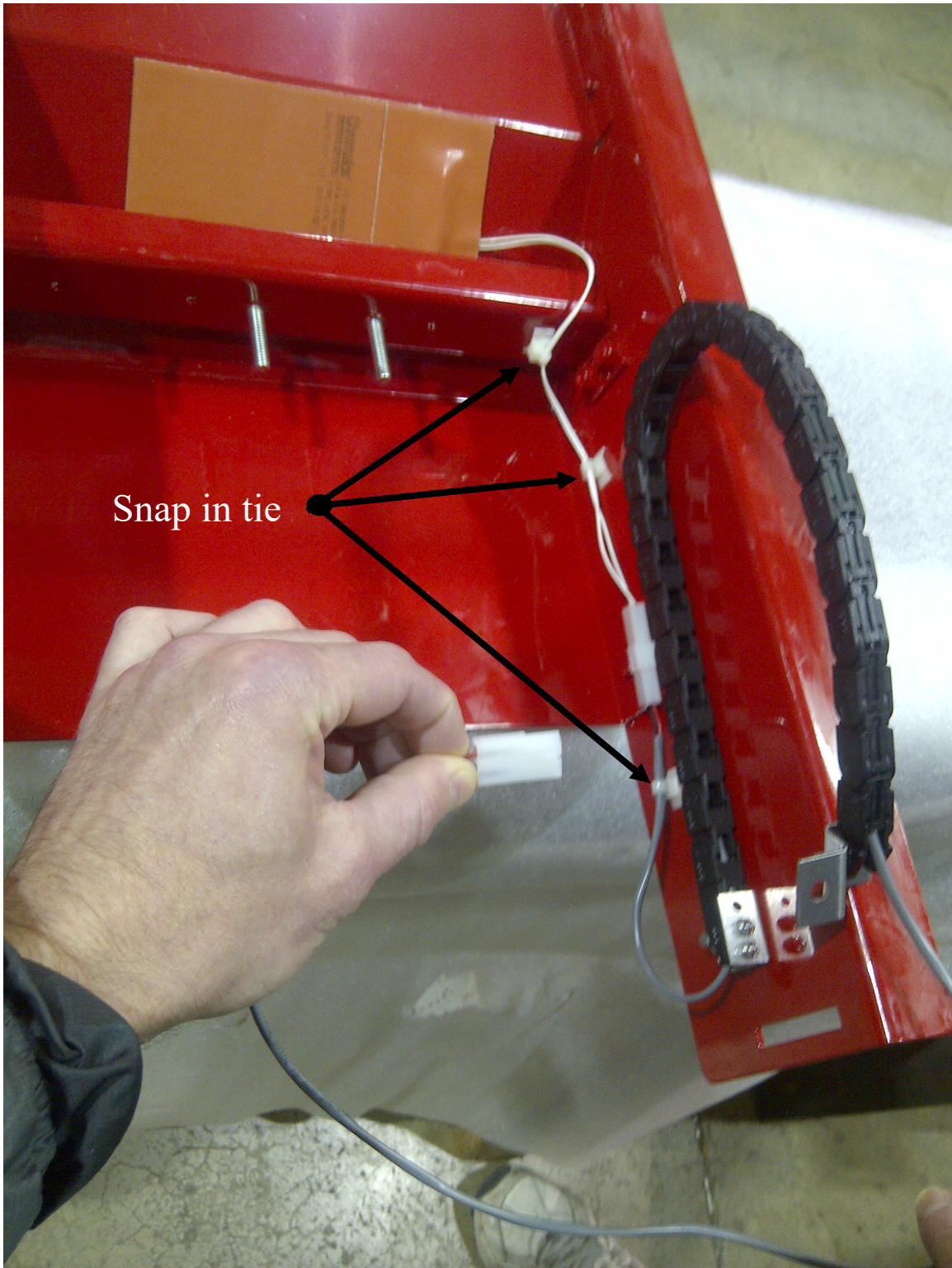
Wire the heater power supply to a 120V circuit following NEC and all local codes. *6" 16ga leads are provided for the power connection.*

## **Heater Operation**

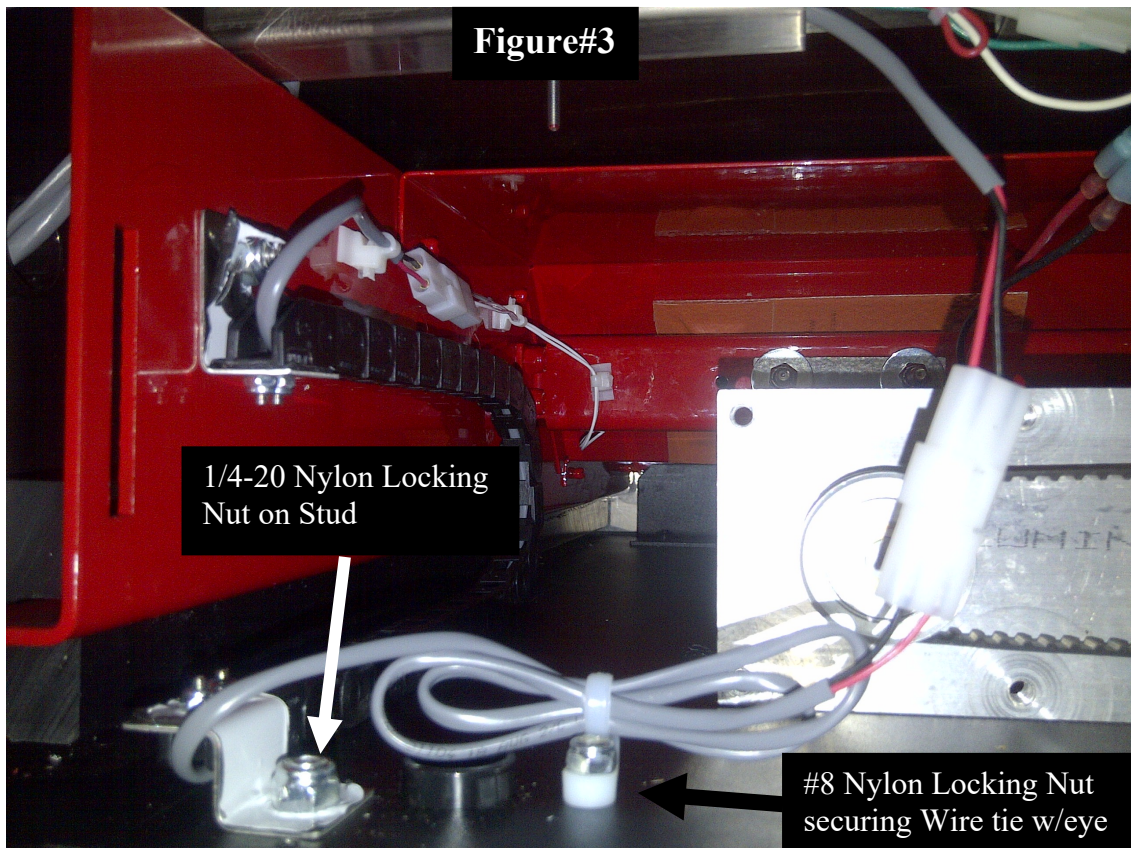
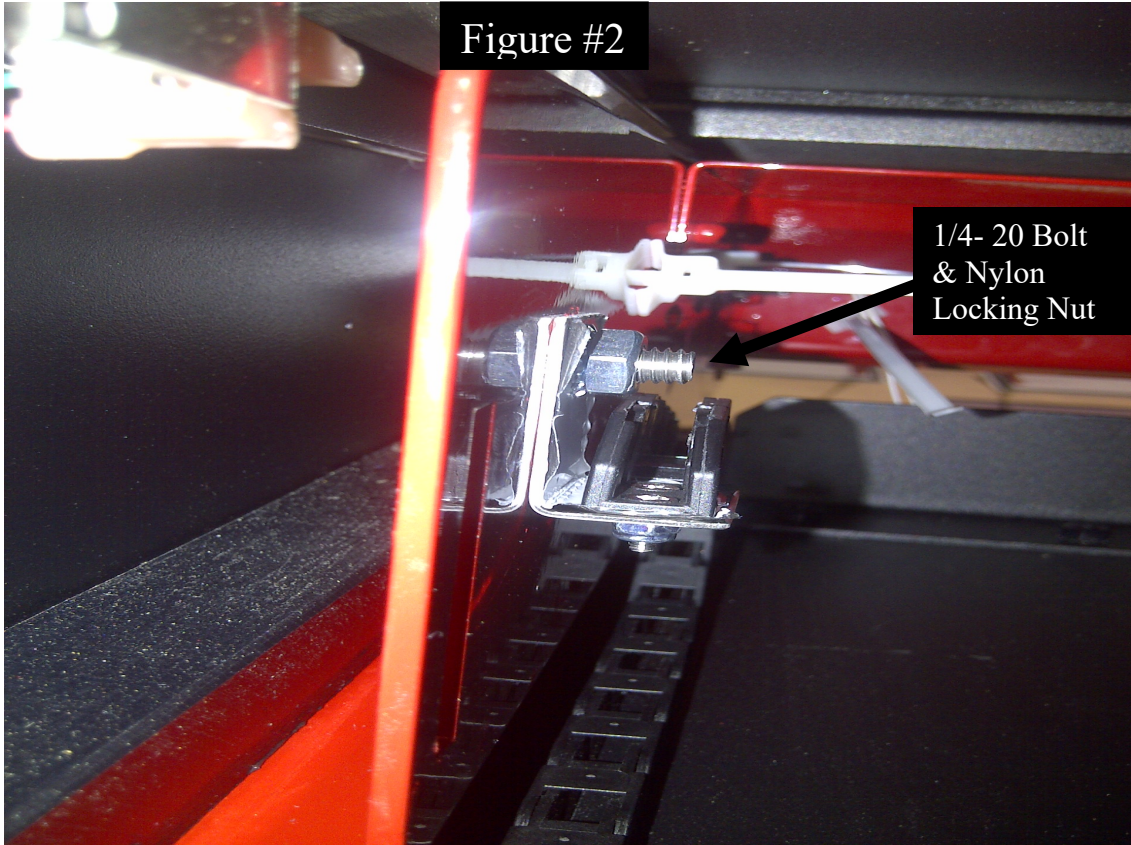
Turn on with the rocker switch on the face of the heater power supply. The switch should illuminate, when powered on.

The drawer will get warm to the touch. The heater is powered from low voltage and protected by a 4-amp *circuit breaker* located in the heater power supply. A non-adjustable thermostat controls the heater. A non-replaceable over-temperature device is built in to the heater to protect against thermostat failure.

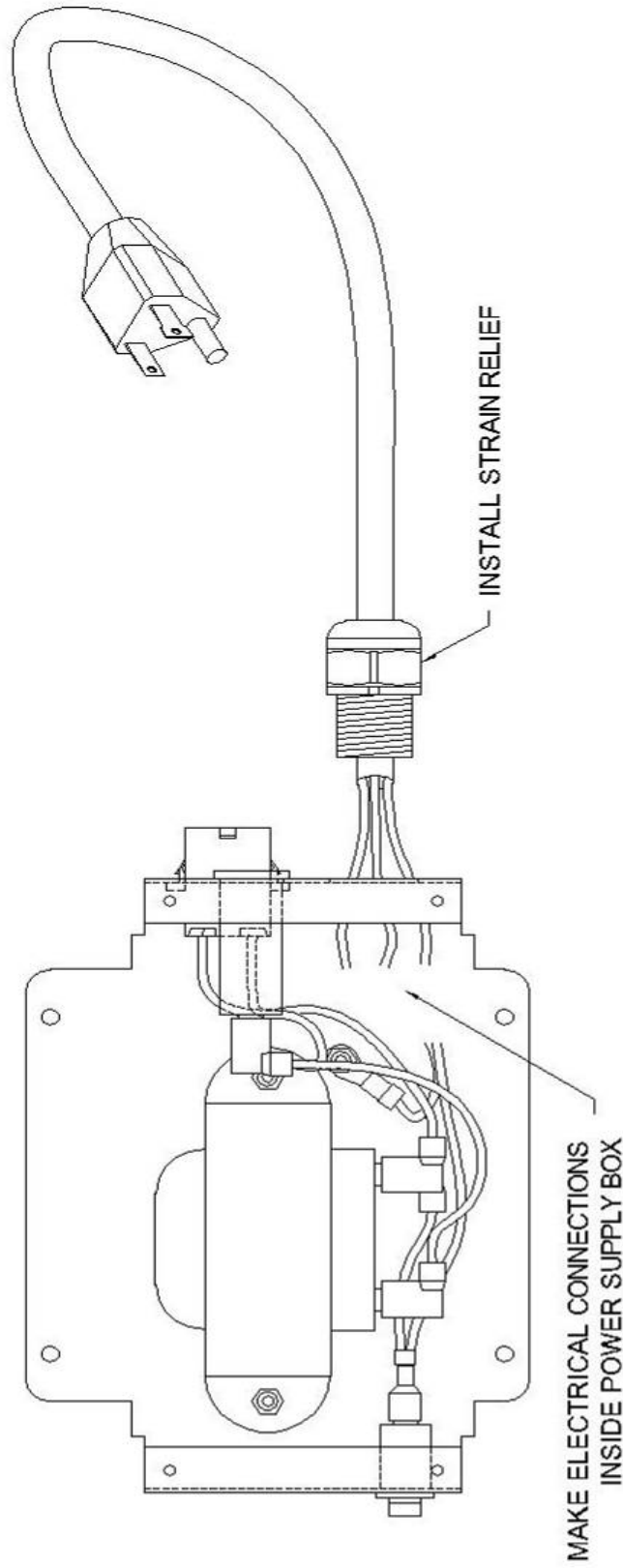
**Figure #1**



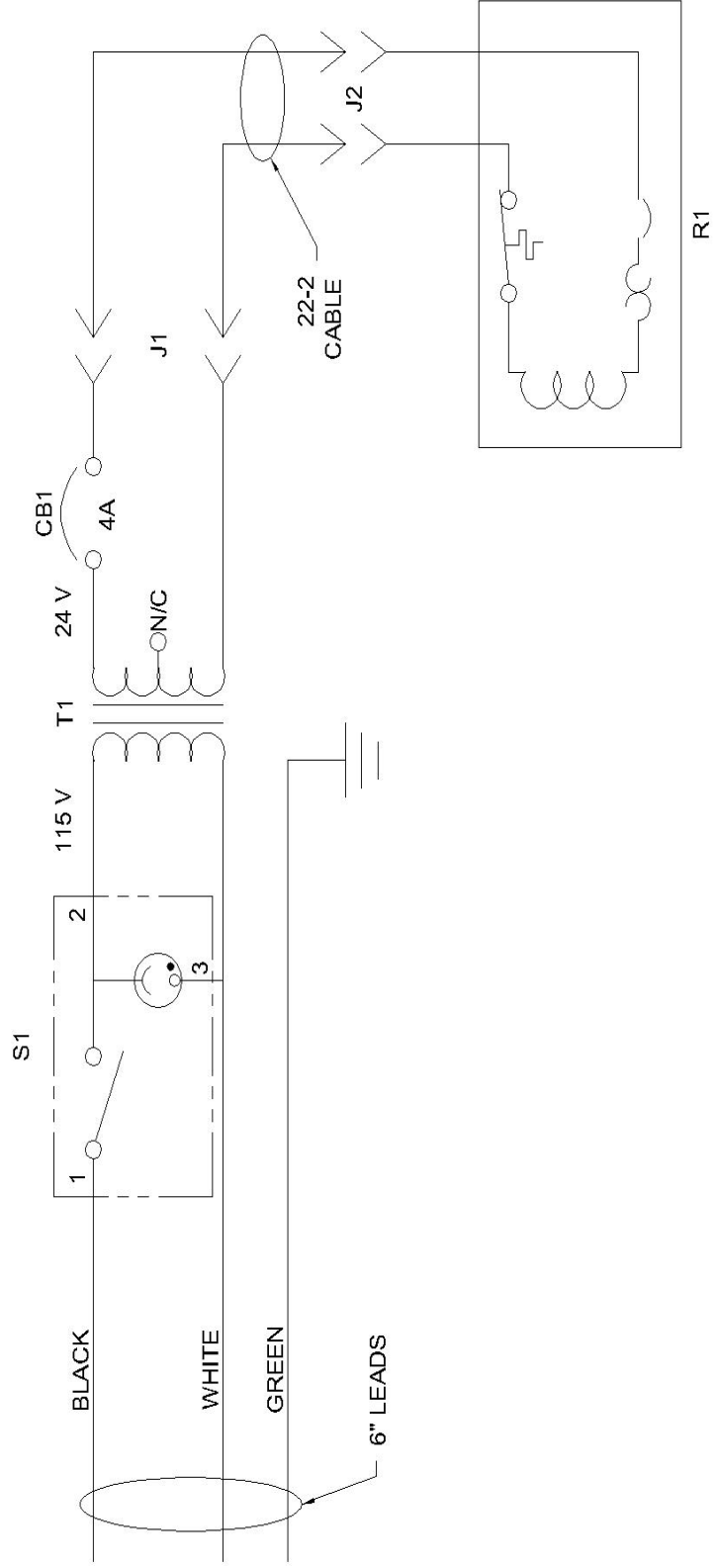




**Figure#4**



# Wiring schematic



### Heater Harness Diagram

