



201 Grandin Road
Maineville, Ohio 45039
(513) 677-0500

G-Car Left Pushrod Manual

Copyright 2014 E. F. Bavis & Associates, Inc.
All Right Reserved

Revised 03/10/2014
P/N/ 00750031

Table of Contents

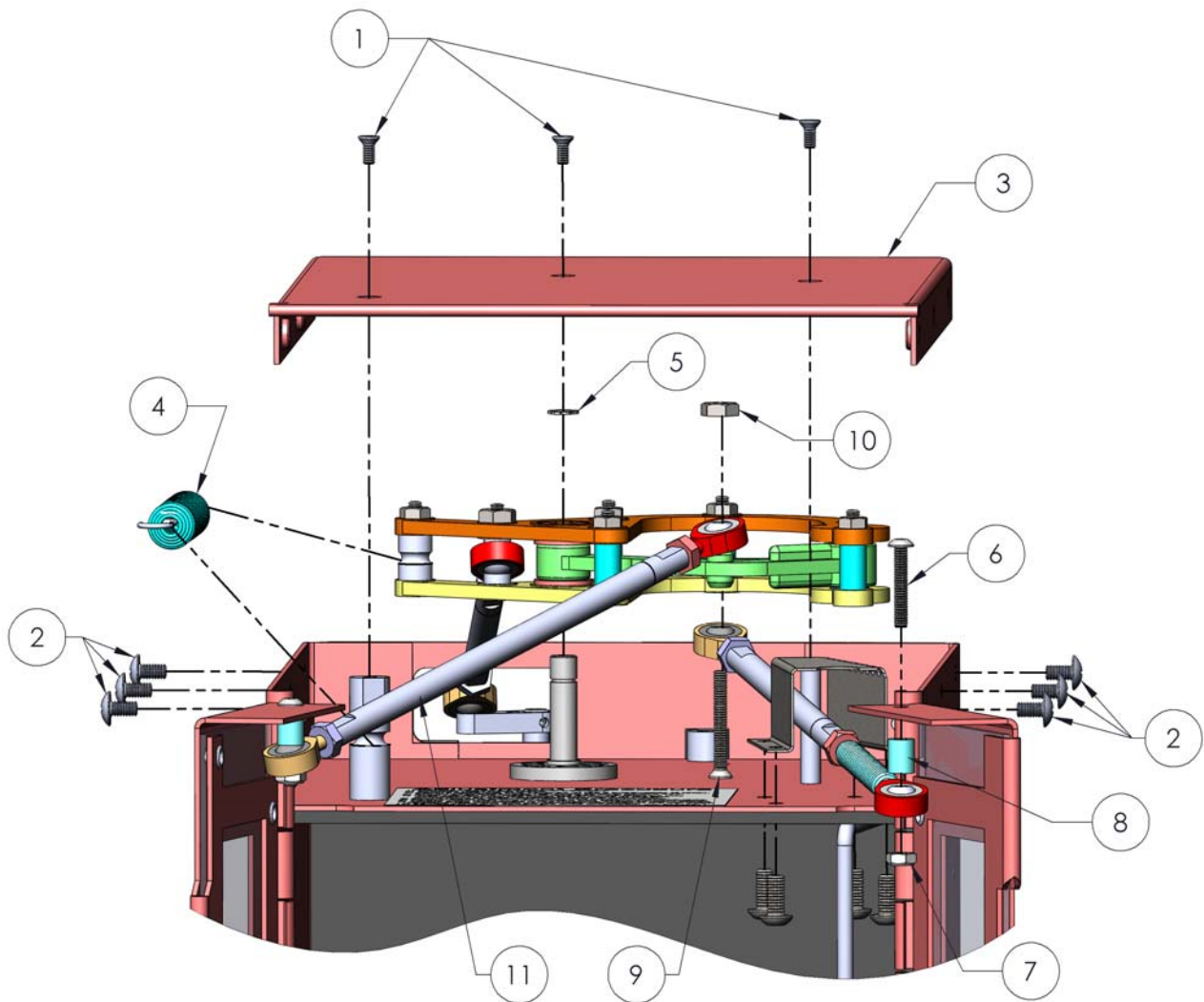
Installation Instructions.....	1
Bill of Materials & Exploded View	2
Door Adjustment Procedure	3

Installation Instructions

1. Send the car to the outside (customer) position.
 - a. This entire installation procedure may be easier if the car is removed from the machine. This is accomplished by removing the outside speaker plate, and releasing the brake while feeding the tape out of the machine.
2. Remove the three # 4-40 x 3/8" Flat Head Machine Screws located on the very top of the car (Item 1 on page 2).
 - a. A #1 Phillips bit works best.
3. Remove the six # 6-32 x 1/4" Truss Head Machine Screws located on the top sides of the car (Item 2 on page 2).
 - a. A #2 Phillips bit works best.
4. Remove the GC End Cover (Item 3 on page 2).
5. Remove the GC Door Close Spring (Item 4 on page 2).
6. Remove the 1/4" Retaining Ring using retaining ring pliers (Item 5 on page 2).
7. Remove the # 5-40 x 3/4" Button Socket Head Machine Screw that connects right pushrod assembly to the door (Item 6 on page 2).
8. Lift up on the black plastic Magnetic Over Run Assembly.
9. Remove the # 5-40 x 1" Phillips Flat Head Machine Screw that connects the Left Pushrod Assembly to the black plastic Magnetic Over Run Assembly (Item 9 on page 2).
10. Remove and discard the damaged Left Pushrod Assembly.
11. Swap the left and the Right Pushrods (if applicable); so that the Right Spring Pushrod is on the bottom and the Left Spring Pushrod is on the top of the Magnetic Over Run Assembly (refer to the diagram on page 2).
12. Install the correct New Left Pushrod Assembly by reversing steps 5 - 9.
13. The G Car Doors must then be inspected to ensure they operate properly. If necessary, adjust the door action following the procedure on the page 3.
14. Reinstall the GC End Cover using the hardware provided in the kit.

Bill of Materials

Item	Part Number	Description	Qty.
1	91062129	#4-40 x 3/8 Phillips Flathead MS SS	3
2	92042723	#6-32 x 1/4 Phillips Truss MS SS	6
3	04305011	GC End Cover SM	1
4	04317021	GC Door Close Spring	1
5	95005072	1/4" Retaining Ring Zinc	1
6	04348151	#5-40 x 3/4 Socket Button Screw	1
7	04348011	#5-40 x Nylon Locking Nut	1
8	04355011	6 x 8 x M3 Unthreaded Spacer	1
9	04348301	#5-40 x 1 Phillips Flathead MS	1
10	04348021	#5-40 x 3/32 Nut	1
11	04370993	GC Left Pushrod Assembly	1



Door Adjustment Procedure

1. Car must be off black plastic stabilizers.
2. Remove door close spring.
3. Loosen BOTH jam nuts on each of the 3 turnbuckles (6 total).
 - a. NOTE: turnbuckles have LEFT hand threads on one end, (The end that is closest to the machined ring is RIGHT hand threaded).
4. Rotate door turn buckles to lengthen door arms.
5. Insert 1/8" pin into home position holes. Pin must go thru both arms into the top sheet metal piece of the car.
 - a. Adjustment of drive turnbuckle may be necessary.
6. Adjust Left and Right door arms until doors just close.
7. Tighten BOTH jam nuts on the Left and Right door turnbuckle.
8. Rotate drive turnbuckle until input arm rotates upward freely.
9. Rotate drive turnbuckle in the opposite direction until pointed corner of the input arm just contacts the back of the car body.
10. Tighten BOTH jam nuts on the drive turnbuckle.
11. Remove home position pin.

