



201 Grandin Road
Maineville, Ohio 45039
(513) 677-0500

G-Car Manual

TABLE OF CONTENTS

G-Car Overview	Page 1
G-Car Door Adjustment Procedure	Page 2
Stabilizer Adjustment Procedure	Page 3
G-Car Installation and Replacement Procedure	Page 4-5
Standard Control Board Shift Point Adjustment Diagram	Page 6
PWM Control Board Shaft Point Adjustment Diagram	Page 7
Drive Tape Mounting Diagram	Page 8
Replacement Parts Diagram	Page 9
Replacement Parts Bill of Materials	Page 10
Troubleshooting	Page 11

G-CAR OVERVIEW

The red G-Car is interchangeable with the grey CC car

The G-Car has lower weight and symmetrical distribution

The G-Car is made with a single wall construction

The doors opens and closes automatically

The door can be closed manually in the parked position

The doors will stay closed

The doors can be opened at any time

The G-Car has clear doors

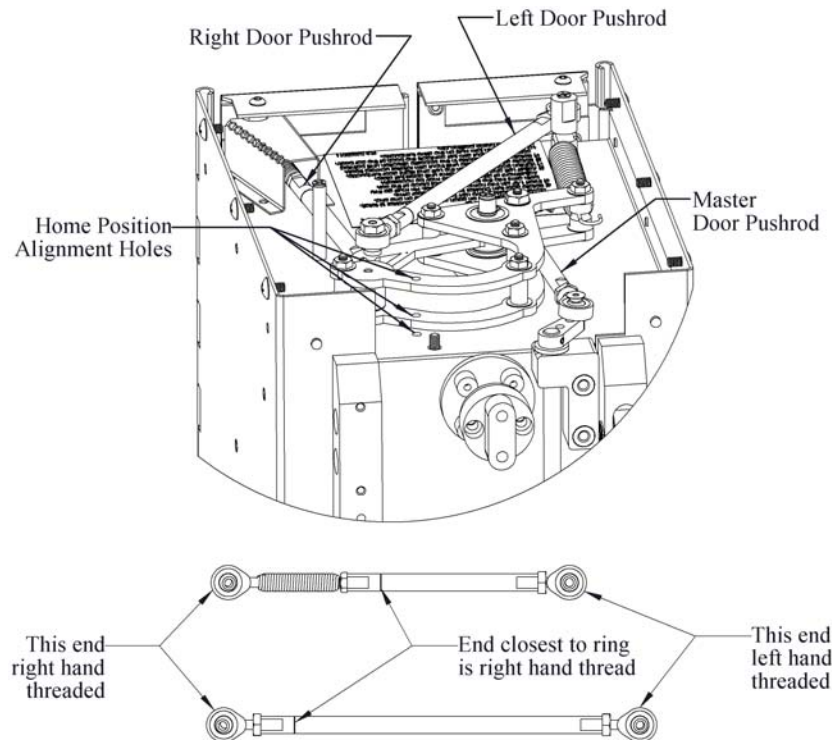
G-CAR DOOR ADJUSTMENT PROCEDURE

HOME POSITION-LEFT TO RIGHT DOOR ADJUSTMENT

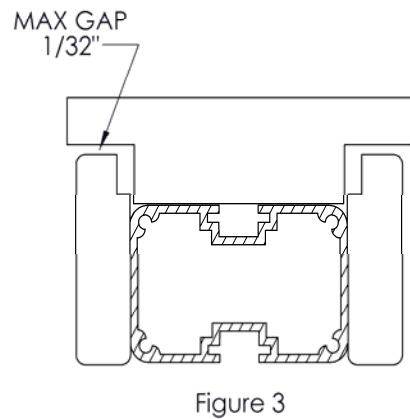
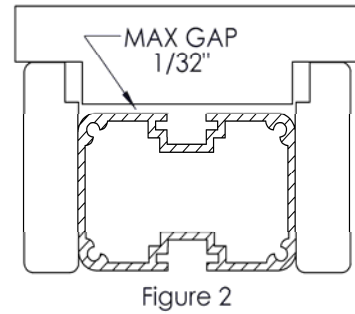
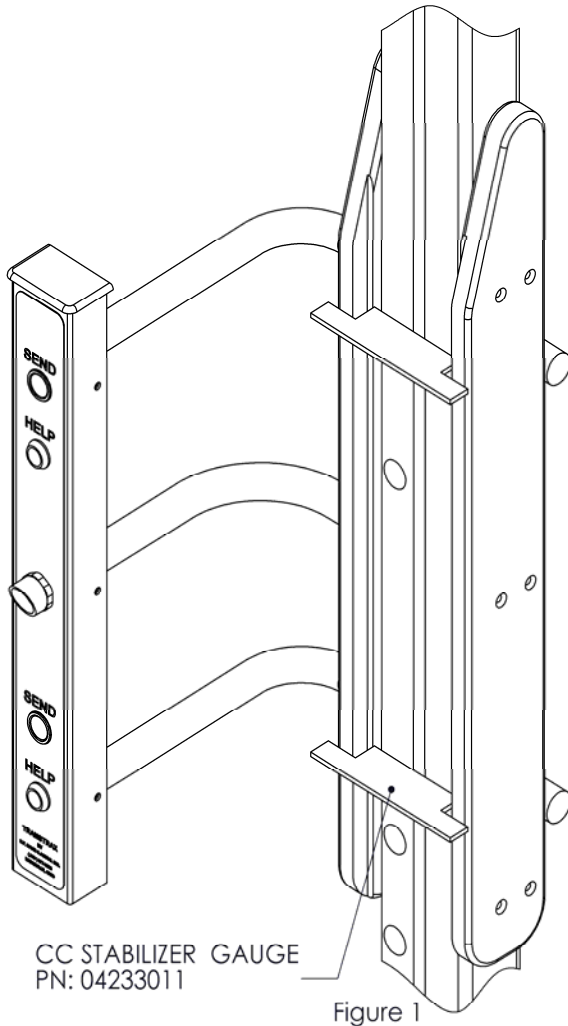
1. Car **MUST** be off stabilizers, either at the customer end or off the track entirely.
2. Remove Car Cover (6 screws on side, 3 screws on top).
3. Remove door close spring.
4. Loosen, and fully back off all jam nuts on each door arm. Use a 5/16" wrench on the nuts and a 1/4" wrench on the pushrod wrench flats. See diagram for Right hand and Left hand thread positions.
5. Insert 1/8" pin into Home Position hole of the magnetic overrun assembly. Push pin thru both plastic arms.
6. Rotate the assembly until the pin drops into the 1/8" Home Position hole. Do Not Force the mechanism or pin.
7. With the pin thru all three Home Position holes, adjust the length of the door arms until both doors are fully closed.
8. Firmly tighten **BOTH** jam nuts on either end of **BOTH** door arms.
9. You are now ready to adjust the door travel.

HOME POSITION-DOOR TRAVEL ADJUSTMENT

1. Install door close spring.
2. Loosen, and fully back off both jam nuts on the Master Door Pushrod. Use a 5/16" wrench on the nuts and a 1/4" wrench on the pushrod wrench flats. See diagram for Right hand and Left hand thread positions.
3. Turn the Master Door Pushrod in the appropriate direction to decrease its length until the Input Arm rotates freely upward.
4. Turn the Master Door Pushrod in the opposite direction to increase its length until the lower corner of the Input Arm contacts the back of the car body. (SEE THE DIAGRAM BELOW).
5. Firmly tighten **BOTH** jam nuts on either end of the drive arm.
6. Remove Pin from Home Position holes.
7. Reinstall Car Cover.
8. Verify the doors open past 90 degrees and close fully when installed on the machine.



STABILIZER ADJUSTMENT PROCEDURE



! Stabilizer height must be checked and adjusted (if needed) on both ends of machine prior to installing car. The car **WILL NOT** function properly unless all **FOUR** stabilizers are set to proper height. !

1) Use stabilizer gauge as shown to verify height of stabilizers. Ensure the gap shown in Figure 2 and Figure 3 Does Not Exceed 1/32". Check the stabilizers in two locations as shown in Figure 1.

2) If stabilizers need adjustment please call us: 1-800-937-3322

G-CAR INSTALLATION REPLACEMENT PROCEDURE

CAUTION

DO NOT USE TAPE TO HOLD DOWN THE BRAKE RELEASE BUTTON FOR A LONG PERIOD OF TIME. THIS WILL CAUSE OVERHEATING AND POSSIBLE DAMAGE TO THE BRAKE.

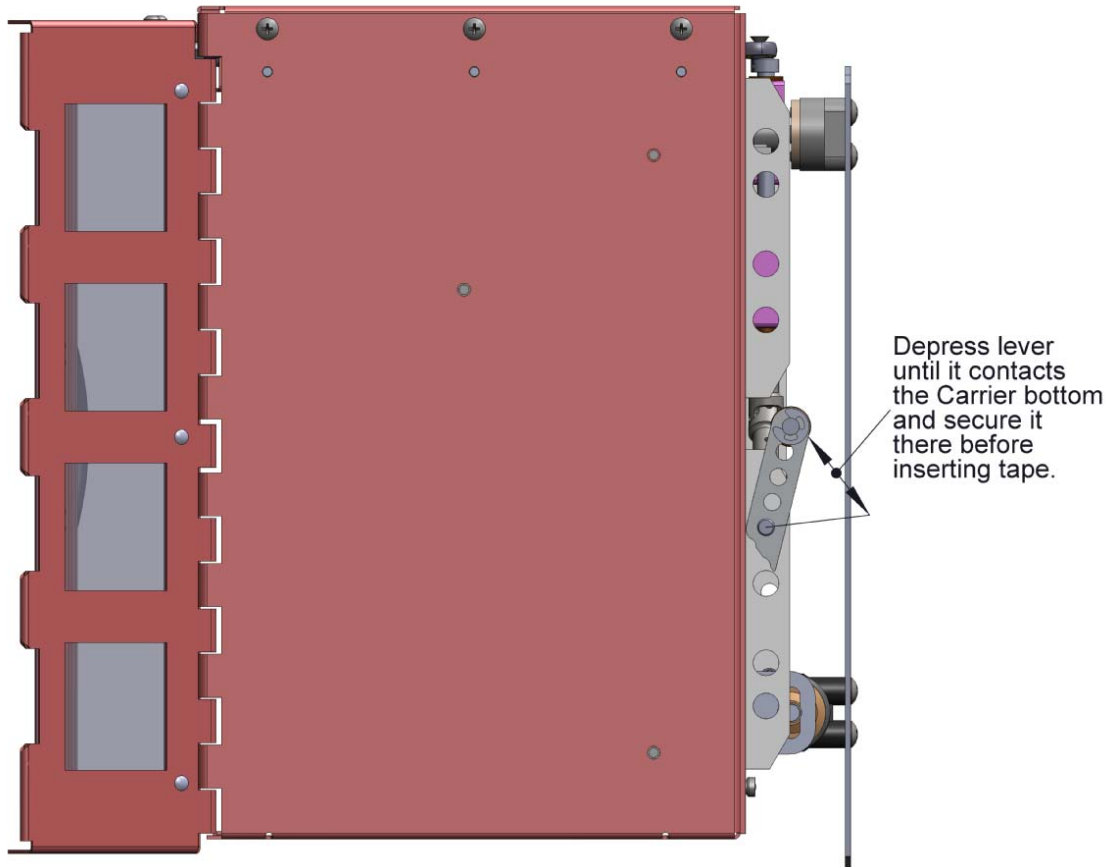
Check the stabilizer distance before you begin by using the stabilizer gauge and instruction sheet provided on page 3.

1. Remove the flat head screw(S) that holds the speaker panel to the customer vertical tube. The speaker panel can hang by the speaker lead and mic wire.
2. Go inside and send the car to the car to the car position outside. Turn the power off on the inside vertical assembly.
3. Open the right door of the inside vertical standoff. The door is hinged; removing the two screws will allow the door to open.
4. On the front of tube, insert a flat head screwdriver into one of the slots of the drive tape.
5. Press and hold the brake release button. This is located on the brake board that is mounted on the right door of the onside vertical standoff.

NOTE

If this unit has a PWM control board, slide the jog switch over on the control board to release the brake.

6. Push up on the screwdriver pushing the tape up. Be careful not scratch the vertical tube, observing the car outside as it lowers. Do not let the car hit the island. Do this until the drive tape disengages from the drive sprocket.
7. Go outside and remove the screws that attach the car to the drive tape. Inspect the drive tape for wear. If there is wear, consult the factory for replacement drive tape.
8. Mount the new car to the drive tape. Make sure that you have 23 slots in the drive tape between the tape blocks and that you use the screws provided. See the diagram on page
9. Depress door-opening lever until it contacts the Carrier bottom, and then use a piece of tape to hold the actuation lever in so that it will not jam on the stabilizer during installation. See the illustration on the next page.



10. Go inside and insert a screwdriver into one of the slots of the drive tape.
11. Press and hold the brake release button.
12. Pull down on the screwdriver feeding the around the drive sprocket. Continue to do this until the car rests on the stabilizers outside. Be careful that the car is not hooked on the speaker or mic wire.
13. Turn the power on at the inside control assembly.
14. Recall the car.
15. Run the unit and observe for proper operation.

NOTE

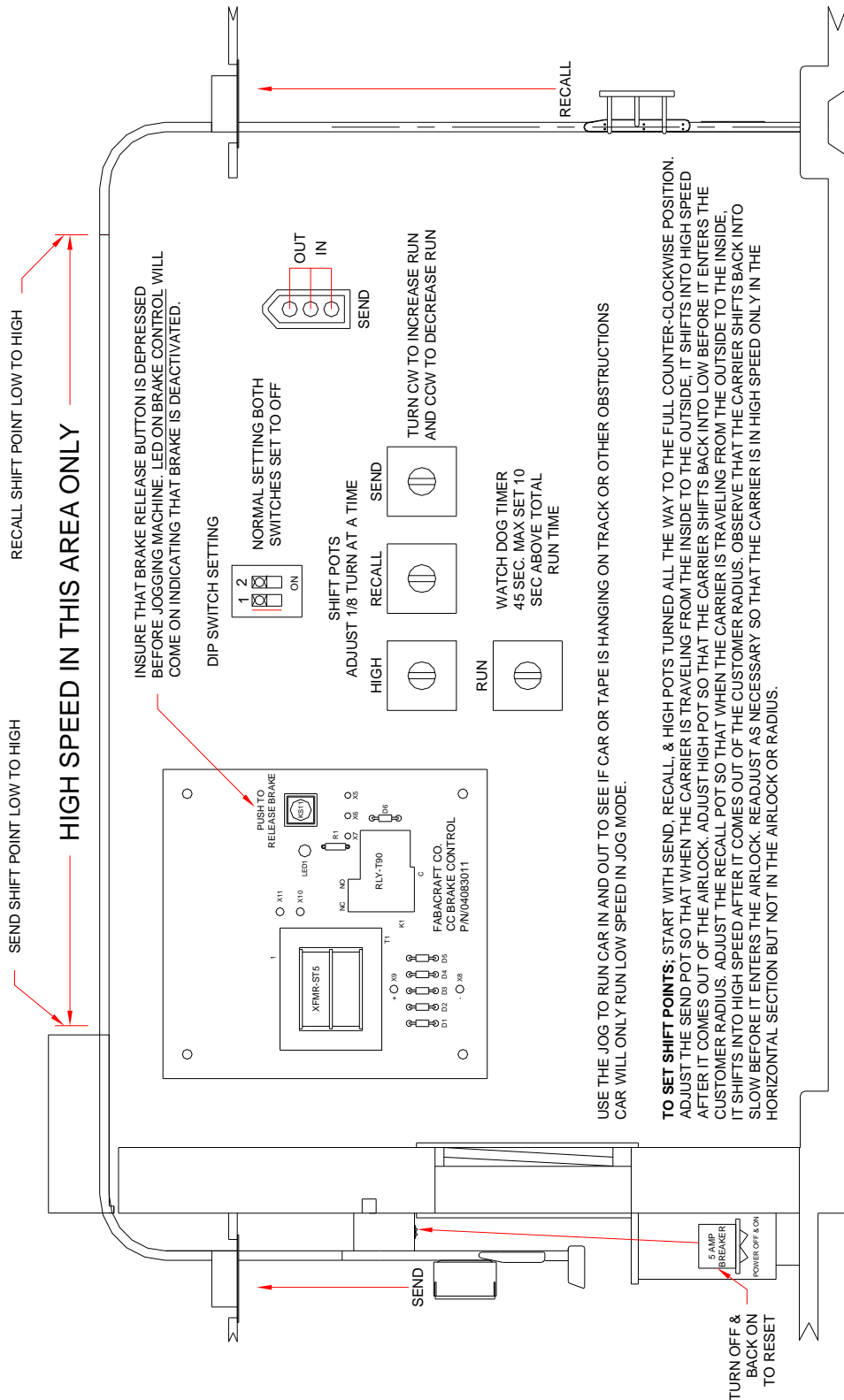
If the car started out above the outside stop switches, it will not shift into high speed.

Simply run the car again and it should shift speeds.

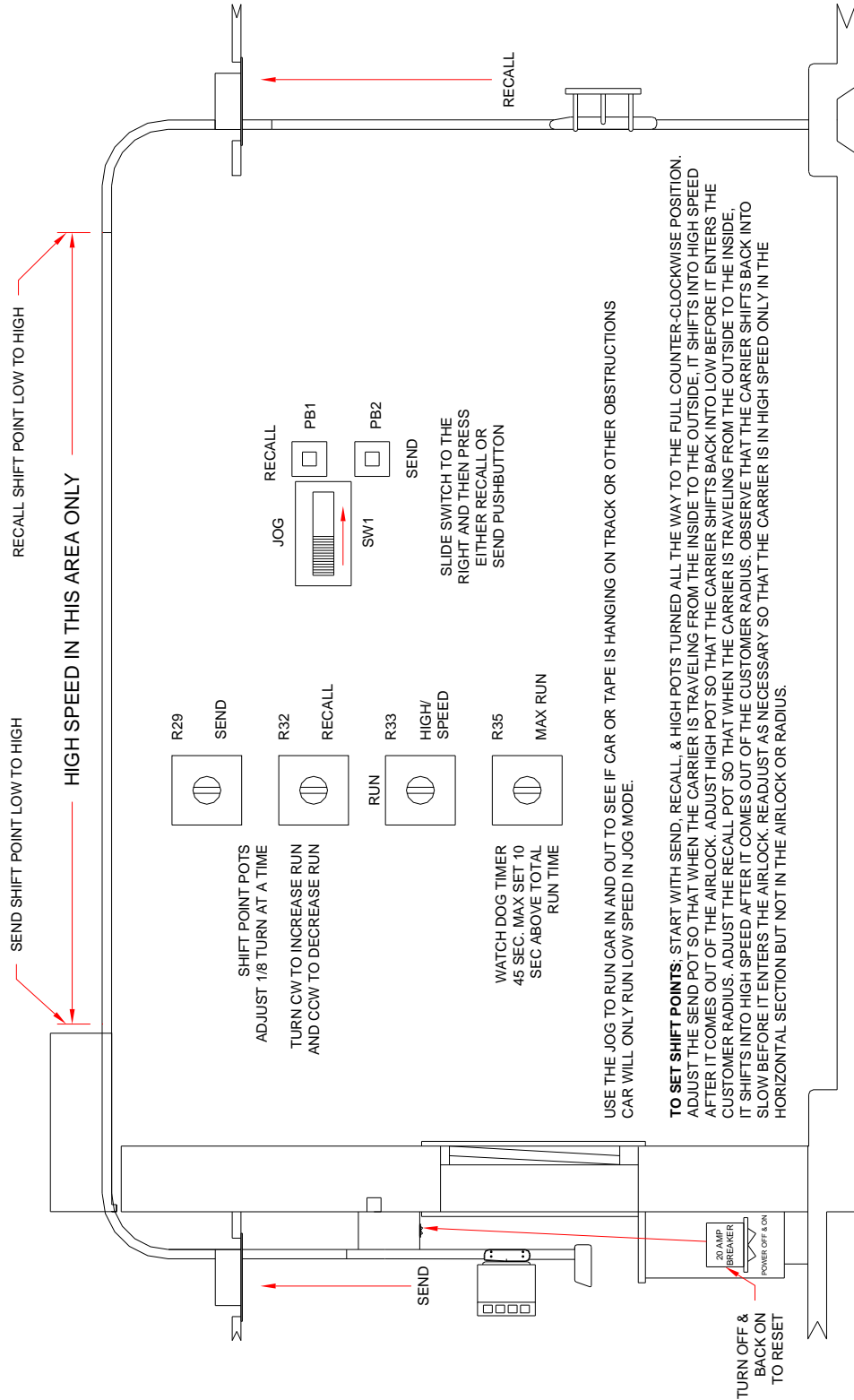
16. If the shift points need to be adjusted, Please refer to the diagram on page 6 & 7.
17. Replace the speaker panel on the customer vertical tube.

Please consult the factory for any further information or assistance.

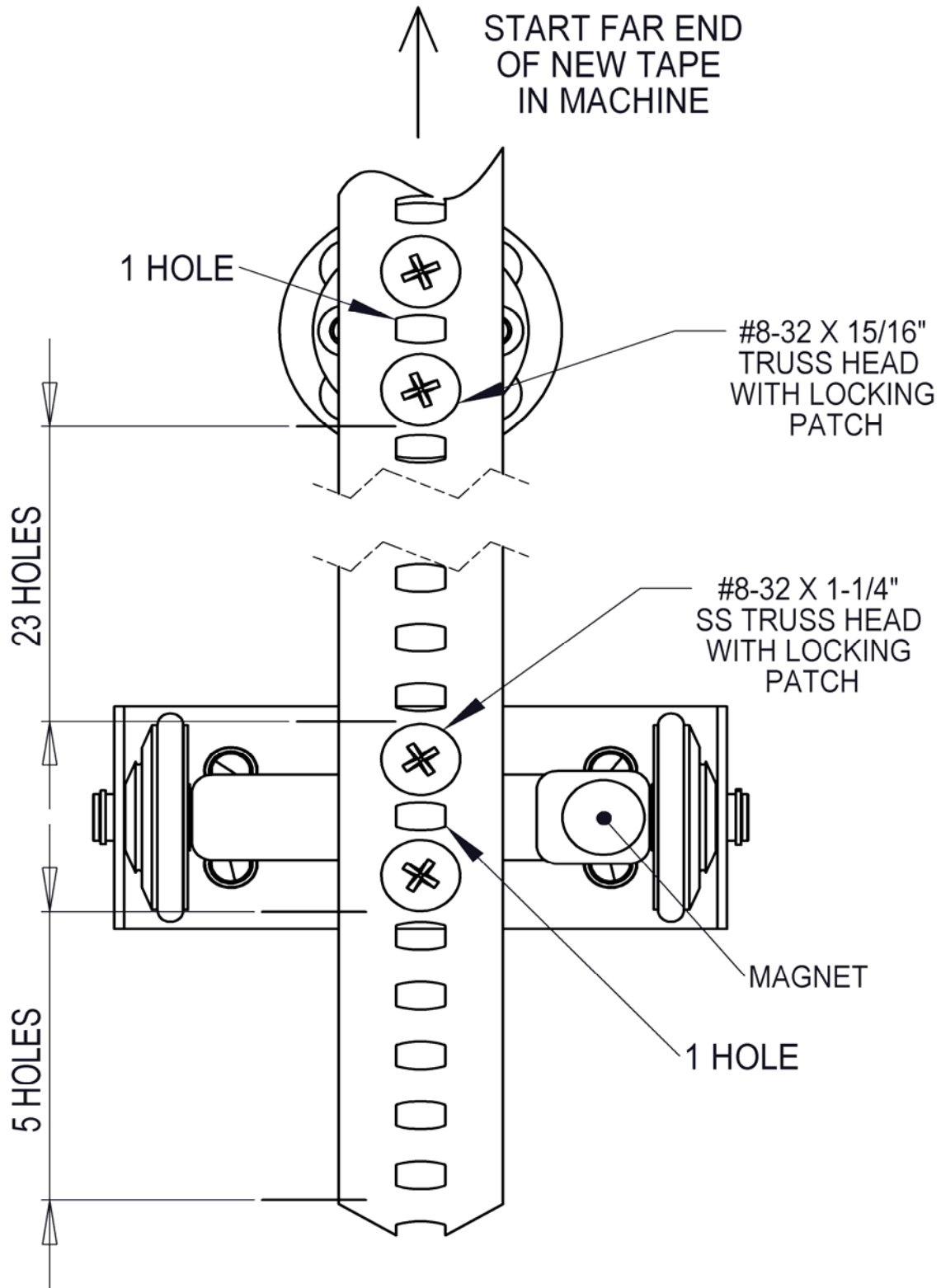
STANDARD CONTROL BOARD SHIFT POINT ADJUSTMENT



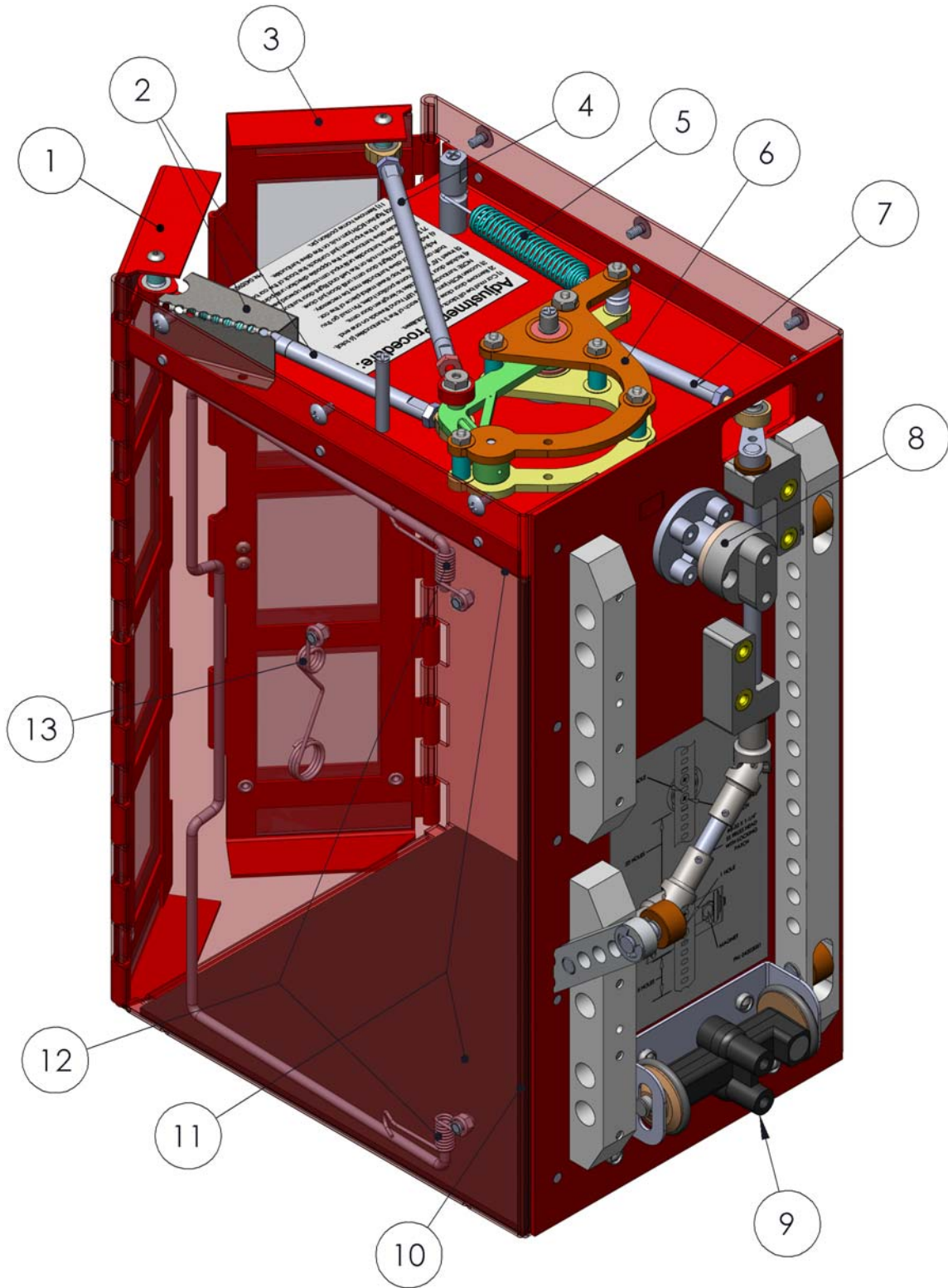
PWM CONTROL BOARD SHIFT POINT ADJUSTMENT



DRIVE TAPE MOUNTING DIAGRAM



G-CAR REPLACEMENT PARTS DIAGRAM



G-CAR REPLACEMENT PARTS

1	04304111	GC right door assembly	Replaces a bent door
2	04382991	GC right door spring upgrade kit	Replaces a broken right pushrod assembly
3	04304121	GC left door assembly	Replaces a bent door
4	04370993	GC left pushrod assembly	Replaces a broken left pushrod assembly
5	04317021	GC door close spring	Replaces a broken or stretched door spring
6	04393991	GC magnetic over run kit	Replaces a broken magnetic over run
7	04370991	GC master door pushrod assembly	Replaces a master pushrod assembly
8	04367991	Spherical tape block kit	Replaces a broken or stripped out tape block
9	04203991	Large tape block kit	Replaces a stripped out tape block
10	04088041	GC liner back	Replaces a worn out liner
11	04088051	GC liner top and bottom	Replaces a worn out liners
12	04338011	GC bail top spring	Replaces a broken bail springs (sold as top and bottom together only)
	04338021	GC bail bottom spring	
13	04063011	CC hold down spring	Replaces a bent or broken hold down spring

TROUBLESHOOT

The car door will not open –

1. Adjust the left and right door adjustment (see page 2).
2. The drive tape is worn.
3. The tape block screws are stripped out.

The car door will not close –

1. Adjust the left and right door adjustment (see page 2).
2. The door close spring is broke, stretches, or disconnected.
3. The car has been damaged

The car door(s) open too far –

1. Adjust the door travel adjustment (see page 2).

