
AW JR Window

Thick Wall Kit Installation Manual

E. F. Bavis & Associates, Inc.

201 Grandin Road
Maineville, Ohio 45039
(513) 677-0500

Tall Cabinet Thick Wall Kit Installation Accessories
P/N 12036021

Part #	Description	Qty.
00143056	3/16 Drill Bit	1
01008508	Self Drilling Drywall Anchor	12
01081011	1/8 Drill Bit	1
12002152	Shelf Support Clips	8
12004092	AW 19" Backsplash	4
12004111	Long Spline	2
12011043	Clear Silicone Sealant	1
Per Kit	WG Short Window Base Left End Assembly	1
Per Kit	WG Short Window Base Right End Assembly	1
Per Kit	WG Short Toe Kick Side	2
12129011	WG Side Cabinet Leg Block	2 (4)
12134011	Thick Wall Kit Cabinet Leg	2 (4)
93009005	10-32 x 1/2" Hex Slot MS Zinc Washer Head	8 (16)
93005007	#8-32 Acorn Nut	12
93009005	#8-10 Black Plastic Screw Cover	12
93062721	8-32x3/8 Phil Truss	12
93080221	#8x1/2 Phil Pan SMS Zinc	12
93241623	#8x1-1/2 Phil Pan TS	12

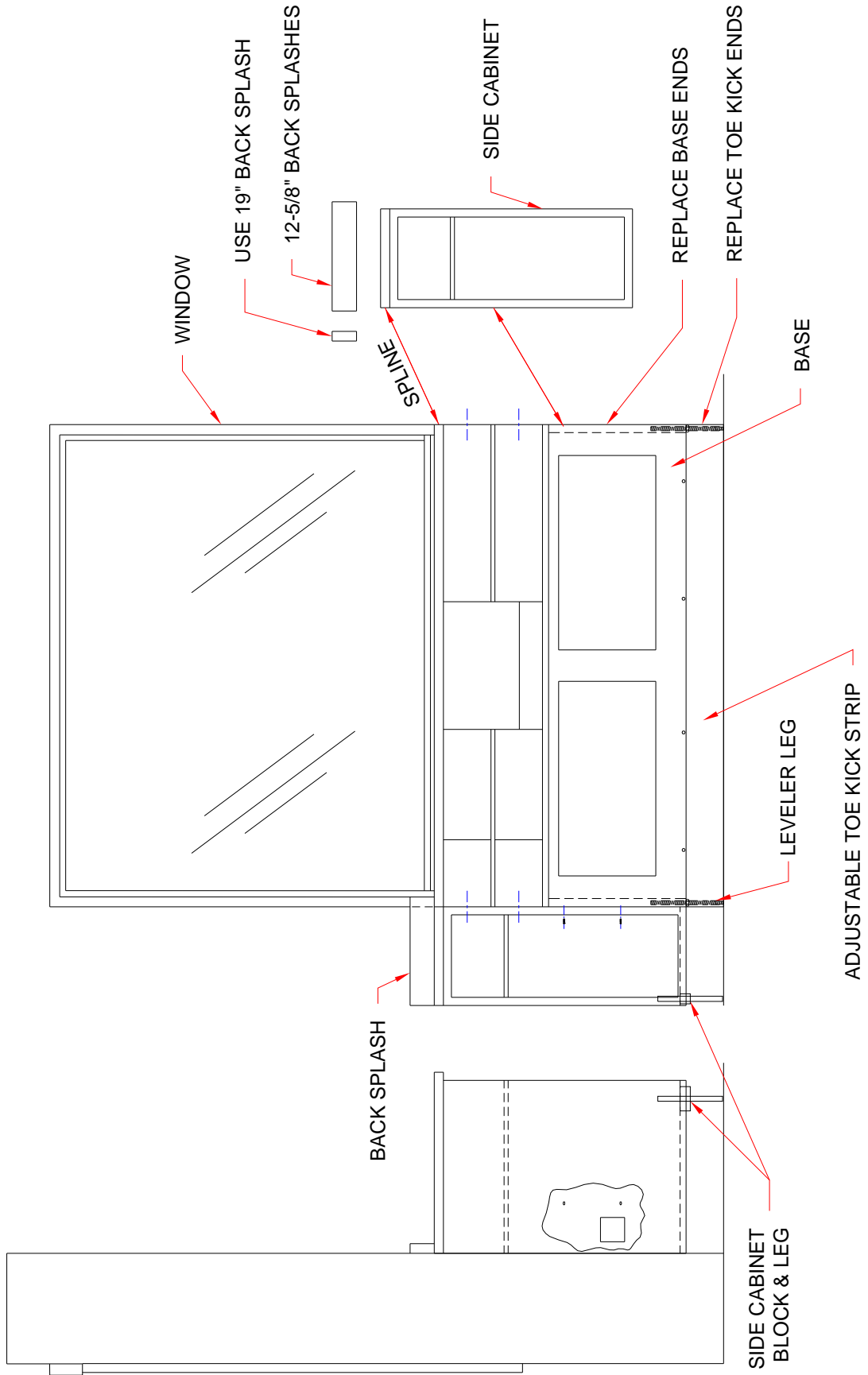
Note: The components of this kit are to be installed prior to installing the base assembly.

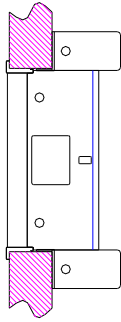
Installation Procedure

(Refer to the installation diagram on page 2)

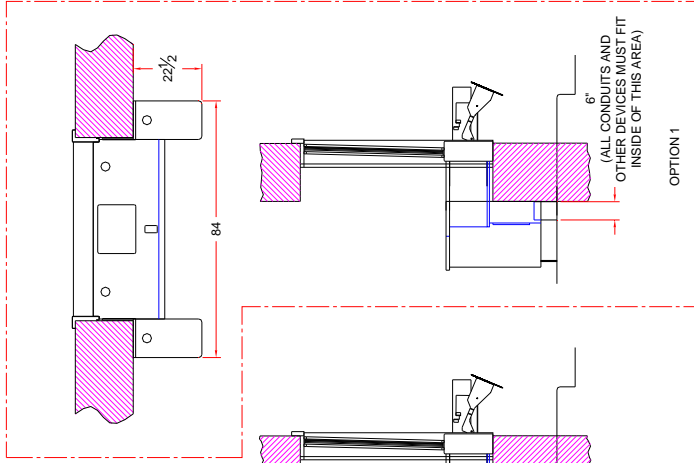
1. Mount the cabinet leg and block to the bottom of the outside corner of the side cabinet using the 10-32 x 1/2" bolts provided. (For Thick Wall Kit PN's 12036026 & 12036031, mount (2) of the cabinet leg and block assemblies to each side cabinet.)
2. Remove the toe kick from the base assembly and replace the ends.
3. Remove the base end assemblies and replace with the ends provided, then move the leveler legs from the old ends to the new ends.
4. Slide the toe kick back into the base assembly.
5. Install the converted base assembly as per the instructions sent with the window, using longer 19" back splash to trim from the window frame out to the edge of the wall.
6. Adjust the leg on the outer corner of the side cabinet to support the cabinet.

If you have any questions or problems, please consult the factory at 1-800-937-3322.

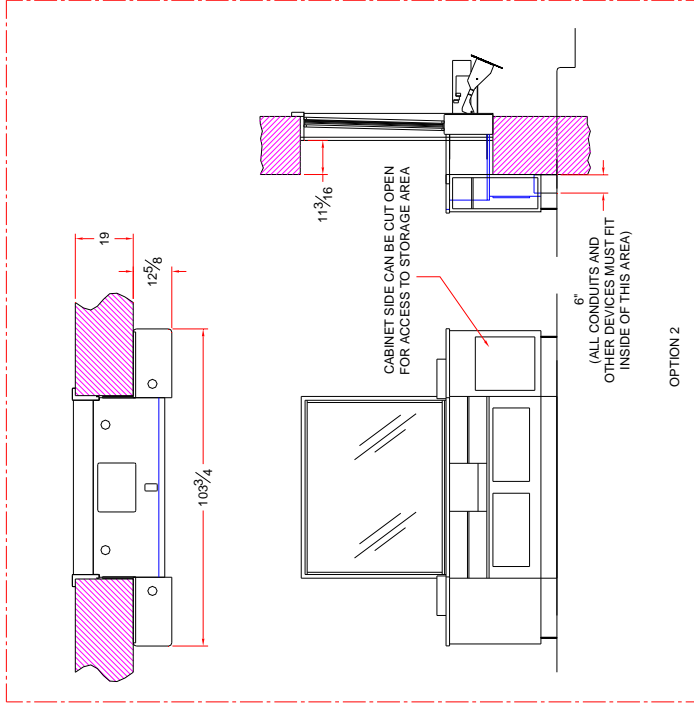




STANDARD 14" WALL CONFIGURATION



OPTION 1



OPTION 2

THICK WALL KIT P.N. 12036021 RECOMMENDED

THESE JOB SPECIFIC SPECIFICATIONS ARE APPROVED FOR MANUFACTURE.
 APPROVED BY (PLEASE PRINT) _____ DATE _____

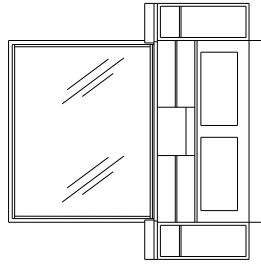
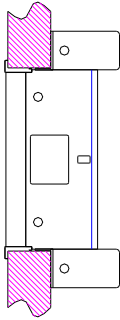
SIGNED _____

PROPRIETARY
 THIS DOCUMENTATION AND INFORMATION CONTAINED HEREIN ARE THE SOLE PROPERTY OF E.F. BAVIS & ASSOCIATES, INC. IT SHALL BE RETURNED UPON REQUEST AND SHALL NOT BE REPRODUCED IN WHOLE OR IN PART, OR DISCLOSED TO ANYONE ELSE, OR USED, WITHOUT WRITTEN CONSENT OF E.F. BAVIS & ASSOCIATES, INC.

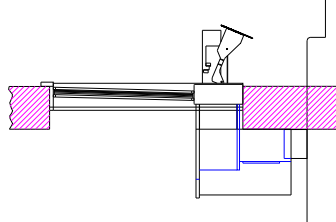
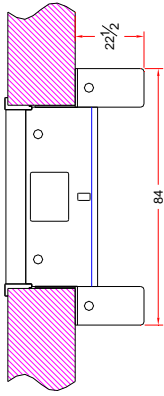
E.F. BAVIS & ASSOCIATES INC.
 201 GRANDIN RD.
 MAINEVILLE, OH 45039
 T: 513-677-0500 F: 513-677-0552 WWW.BAVIS.COM

DIMENSIONS ARE IN INCHES UNLESS OTHERWISE SPECIFIED
 FILE
 AWJRLG CABINET CONFIGURATIONS
 16-1/2 IN TO 20-1/2 IN THICK WALL

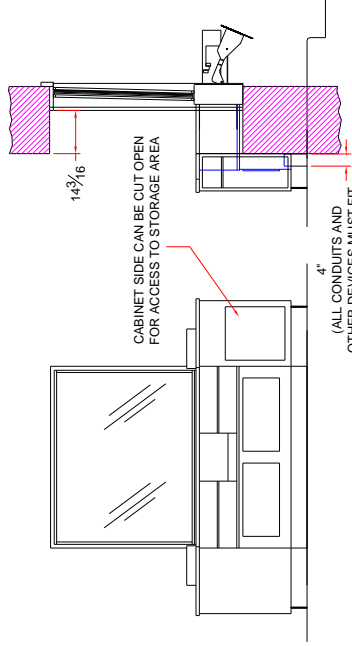
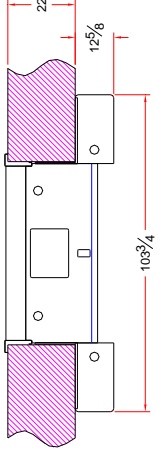
REVISED: 05/08/12	DRAWN: M. CRAVEN	DATE: 04/11/12	SIZE: 16 1-2 TO 20 1-2 THK WALL	SHEET: 1 of 1
-------------------	------------------	----------------	---------------------------------	---------------



STANDARD 14" WALL CONFIGURATION



OPTION 1 - NOT RECOMMENDED
VERY LITTLE SUPPORT FOR SIDE CABINET



OPTION 2
RECOMMENDED

CABINET SIDE CAN BE CUT OPEN FOR ACCESS TO STORAGE AREA

4"
(ALL CONDUITS AND OTHER DEVICES MUST FIT INSIDE OF THIS AREA)

THICK WALL KIT P.N. 12036023 RECOMMENDED

THESE JOB SPECIFIC SPECIFICATIONS ARE APPROVED FOR MANUFACTURE.

APPROVED BY (PLEASE PRINT) _____

SIGNED _____ DATE _____

PROPRIETARY
THIS DOCUMENTATION AND INFORMATION CONTAINED ARE THE SOLE PROPERTY OF E.F.BAVIS & ASSOC., INC. IT SHALL BE RETURNED UPON REQUEST AND SHALL NOT BE REPRODUCED IN WHOLE OR IN PART, OR DISCLOSED TO ANYONE ELSE, OR USED, WITHOUT WRITTEN CONSENT OF E.F. BAVIS & ASSOC., INC.



E.F. BAVIS & ASSOCIATES INC.
201 GRANDIN RD.
MAINEVILLE, OH 45039
T: 513-677-0500 F: 513-677-0552 WWW.BAVIS.COM

DIMENSIONS ARE IN
INCHES
UNLESS OTHERWISE SPECIFIED

AWJR LG CABINET CONFIGURATIONS
20-1/2 TO 22-1/2 THICK WALL

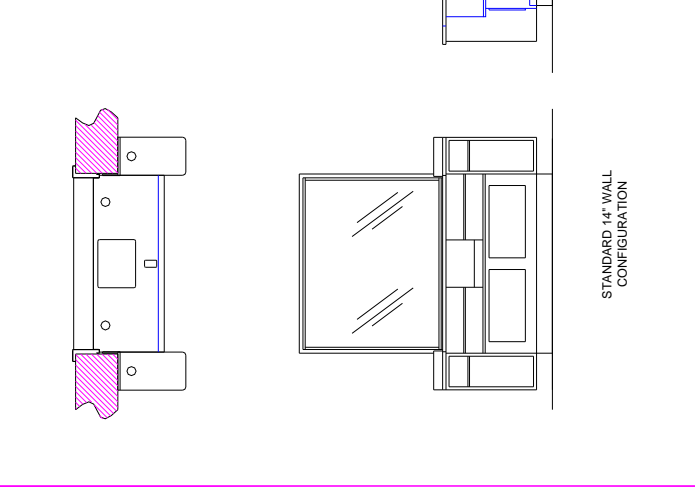
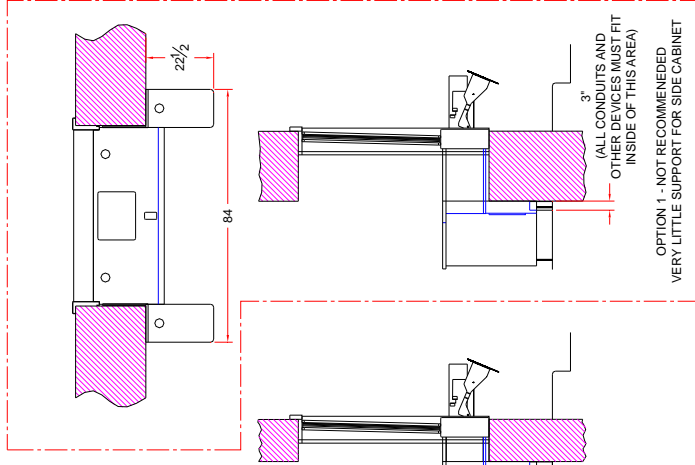
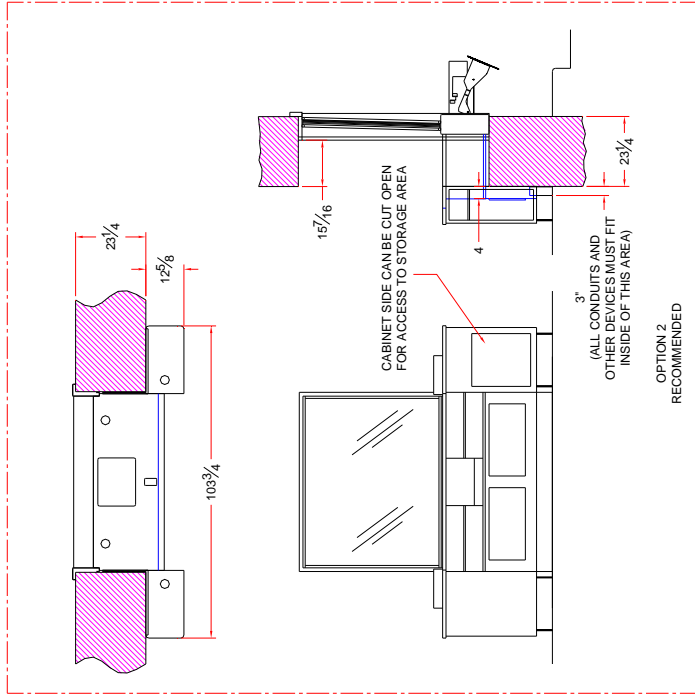
REVISED 05/08/12

DRAWN BY M. CRAVEN

DATE 04/11/12

SIZE A

SHEET 1 OF 1



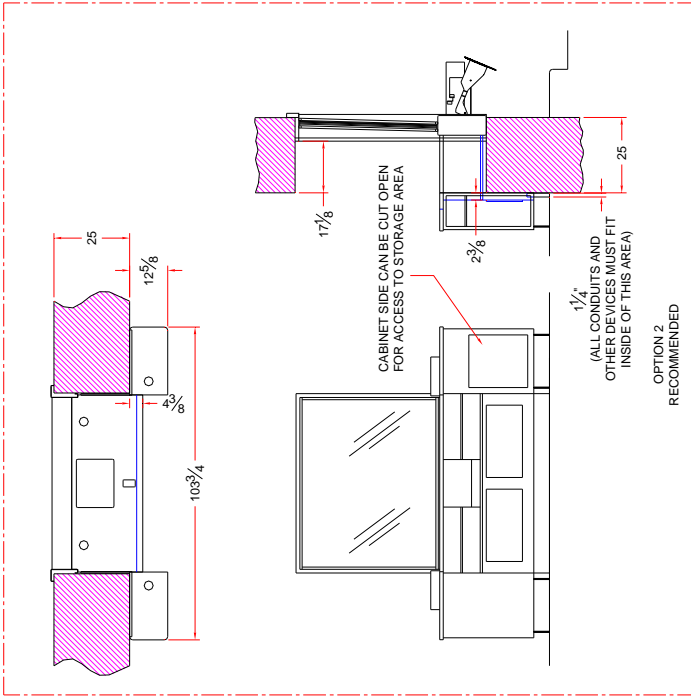
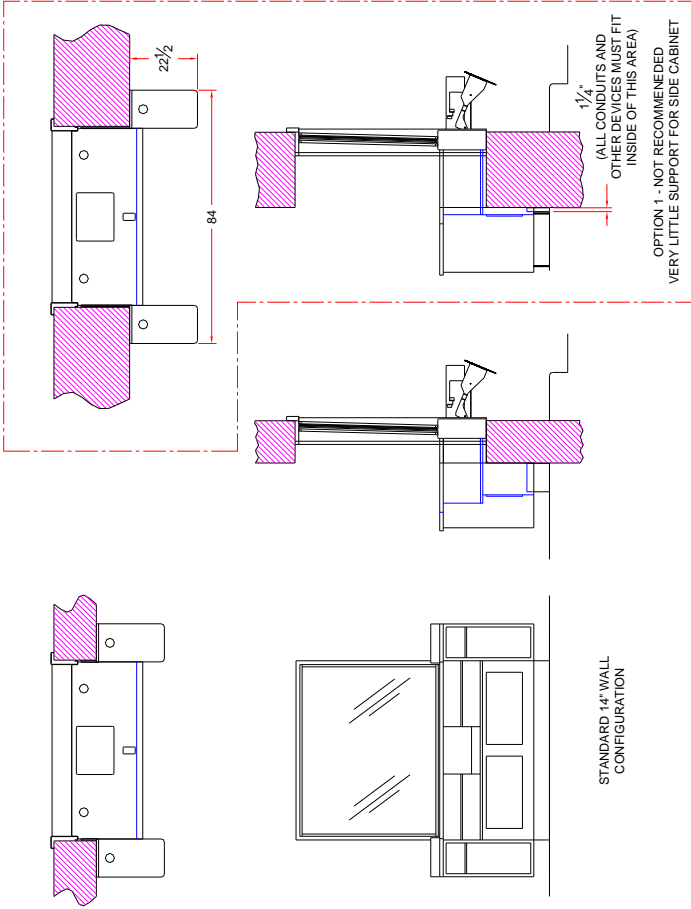
THICK WALL KIT P.N. 12036026 RECOMMENDED

THESE JOB SPECIFIC SPECIFICATIONS ARE APPROVED FOR MANUFACTURE.
 APPROVED BY (PLEASE PRINT) _____ DATE _____
 SIGNED _____

PROPRIETARY
 THIS DOCUMENTATION AND INFORMATION CONTAINED HEREIN ARE THE SOLE PROPERTY OF E.F. BAVIS & ASSOCIATES, INC. IT SHALL BE RETURNED UPON REQUEST AND SHALL NOT BE REPRODUCED IN WHOLE OR IN PART, OR DISCLOSED TO ANYONE ELSE, OR USED, WITHOUT WRITTEN CONSENT OF E.F. BAVIS & ASSOCIATES, INC.

E.F. BAVIS & ASSOCIATES INC.
 201 GRANDIN RD.
 MAINEVILLE, OH 45039
 T: 513-677-0500 F: 513-677-0552 WWW.BAVIS.COM

DIMENSIONS ARE IN INCHES UNLESS OTHERWISE SPECIFIED		FILE	AWJUR LG CABINET CONFIGURATIONS 22-1/2 TO 23-1/2 THICK WALL
REVISED	DRAWING NO.	SHEET	BHEET
05/08/12	M. CRAVEN	04/11/12	22 1-2 TO 23 1-2 THK WALL 1 of 1



THICK WALL KIT P.N. 12036031 RECOMMENDED

THESE JOB SPECIFIC SPECIFICATIONS ARE APPROVED FOR MANUFACTURE.

APPROVED BY (PLEASE PRINT) _____ DATE _____

SIGNED _____ DATE _____

PROPRIETARY
THIS DOCUMENTATION AND INFORMATION CONTAINED HEREIN ARE THE SOLE PROPERTY OF E.F. BAVIS & ASSOCIATES, INC. IT SHALL BE RETURNED UPON REQUEST AND SHALL NOT BE REPRODUCED IN WHOLE OR IN PART, OR DISCLOSED TO ANYONE ELSE, OR USED, WITHOUT WRITTEN CONSENT OF E.F. BAVIS & ASSOCIATES, INC.

E.F. BAVIS & ASSOCIATES INC.
201 GRANDIN RD.
MAINEVILLE, OH 45039
T: 513-677-0600 F: 513-677-0652 WWW.BAVIS.COM

AWJRLG CABINET CONFIGURATIONS
23-1/2 TO 25 THICK WALL

DATE: 05/08/12
DRAWN BY: M. CRAVEN
CHECKED BY: A
SHEET NO.: 1 OF 1

