
TD Double Chain Cable Carrier Kit Installation Manual

E. F. Bavis & Associates, Inc.

201 Grandin Road
Maineville, Ohio 45039
(513) 677-0500

Card Reader Cord Kit

Table of Contents

Installation Instructions.....	1
Figure 1.....	2
Figure 2.....	3
Figure 3.....	4
Parts List.....	5

Installation Instructions

1. Run the drawer to the inside position, remove the five back panel screws, and remove the back panel (Figure 1).
2. Remove two 1/4-20 nylon lock nuts from the nut plate to remove the red drawer bin. (CAUTION: After these two nuts have been removed, the weight of the inside door could cause the red bin to move and possibly slide out of the drawer shell entirely.)
3. Slide the red drawer bin and attached parts out the customer end of the drawer shell.
4. Mark the locations for the (2) 3/16" (0.188") holes in the sides of the red drawer bin and the (1) 1 3/8" (1.375") diameter holes in the lower corner of the back panel and the upper corner of the red drawer bin (Figure 2).
5. Using a 3/16" (0.188") drill bit, drill the finished holes in the sides of the red drawer bin, for the lanyard attachment.
6. To get the two 1 3/8" (1.375") diameter holes in the rear of the red drawer bin and back panel, use a 1 3/8" hole punch in both the red drawer bin and the back panel as shown.
7. Remove metal chips and debris, from red drawer bin, back panel, and drawer shell.
8. Install one end of each of the lanyards to the sides of the red drawer bin in the 3/16" diameter holes with the hardware provided.
9. Reinstall the red drawer bin, and hardware (Figure 1).
10. Remove the snap cable carrier zippers, from the cable carriers (Figure 2).
11. Install the card reader and signature capture cords into the cable carriers.

NOTE: May have to unsnap the last link of cable carrier from the chain to install reader cord. Make sure that there is sufficient slack at each end of the cable. Cable length varies between stores.
12. Reinstall cable zippers into cable carriers.
13. Remove the nut from the 1/4-20 stud located on the inside left of the drawer shell bottom, (Figure 1).
14. Mount the cable carriers and harnesses to the drawer shell by putting the small bracket onto the 1/4-20 stud so the small hole in the bottom flange aligns with the back panel screw hole, and then reinstall the nut removed in step 13.
15. Mount the large bracket to the back of the red drawer bin on top of existing nuts, using the two lock nuts.
16. Feed the cables through the hole in the red drawer bin, and install one of the modified 1 3/8" hole plugs with the split around the cables.
17. Feed the other end of the cables through the hole in the back panel and install other modified 1 3/8" hole plug by sliding cables through split.
18. Using the wire ties provided, tie off the cables at the red drawer bin end to keep them from getting caught on any of the internal components as the drawer moves in and out. (See Figure 3)
19. Run drawer to make sure that cable is free from moving parts (Figure 1).
20. Reinstall the back panel.
21. Install the other end of the lanyard to the credit card reader with the connecting bracket (Figure 2).

NOTE: Each reader is different, so each installation will be modified according to space available (hardware not included).
22. Connect credit card reader cord to reader.

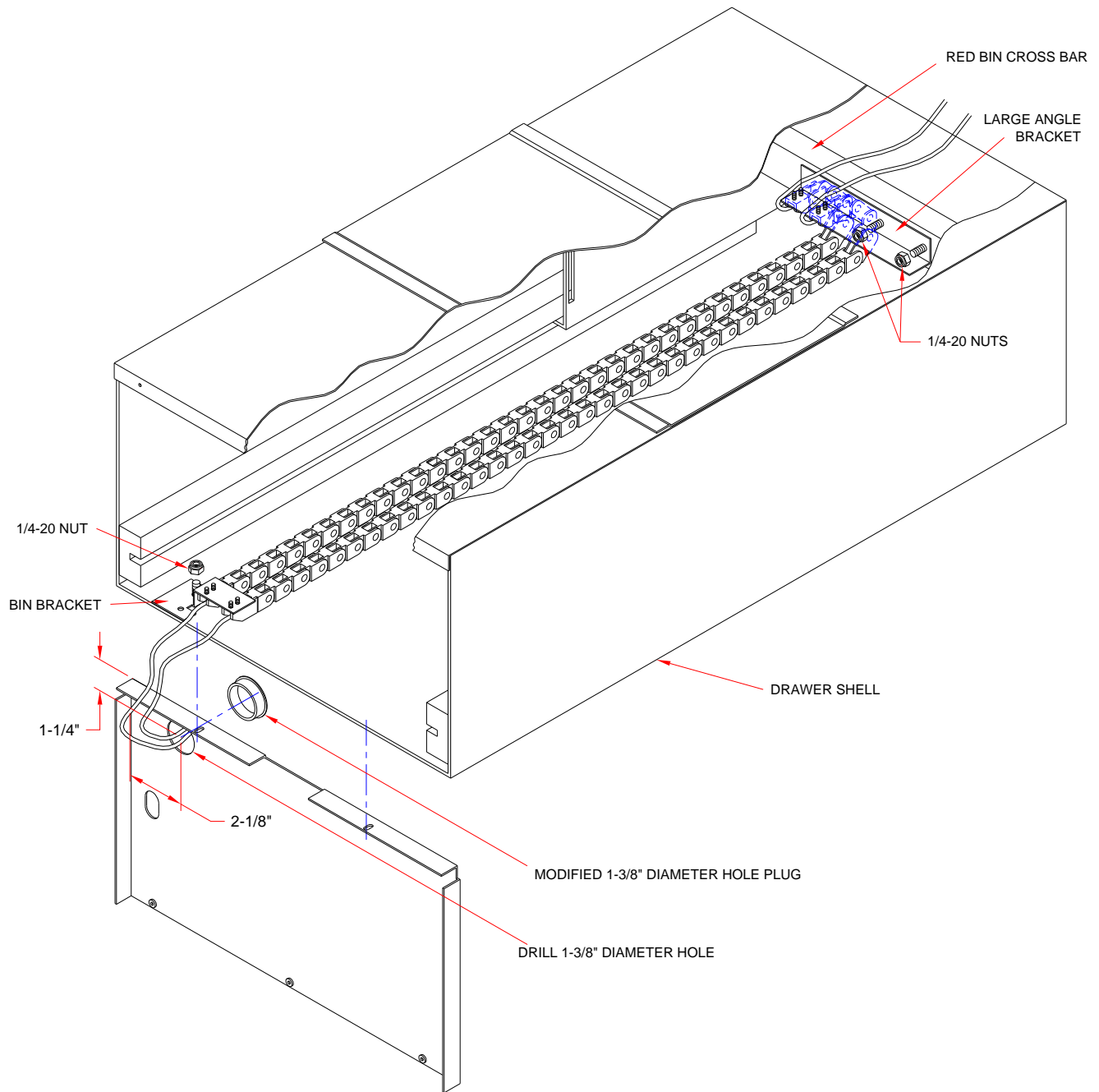


FIGURE 1

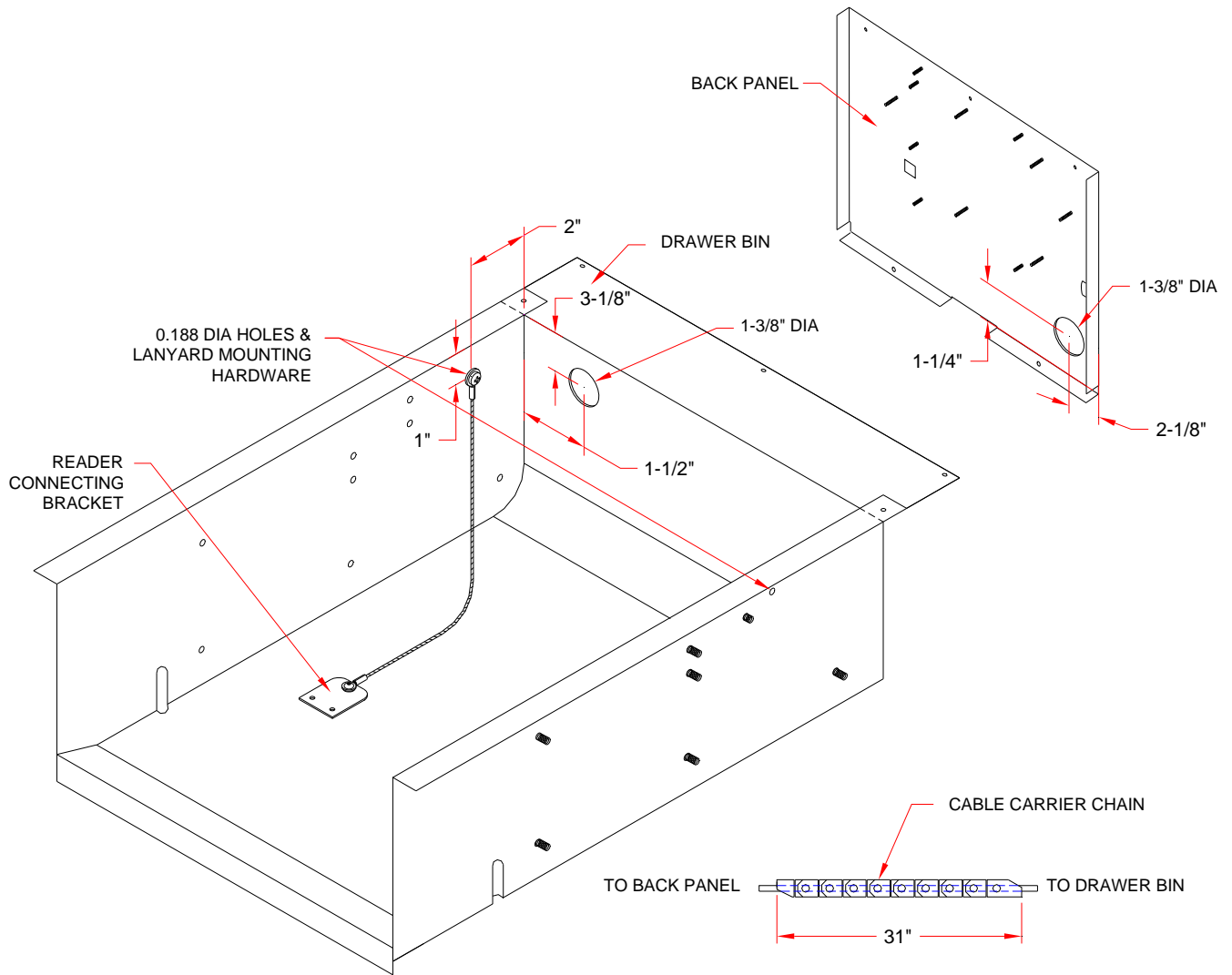


FIGURE 2

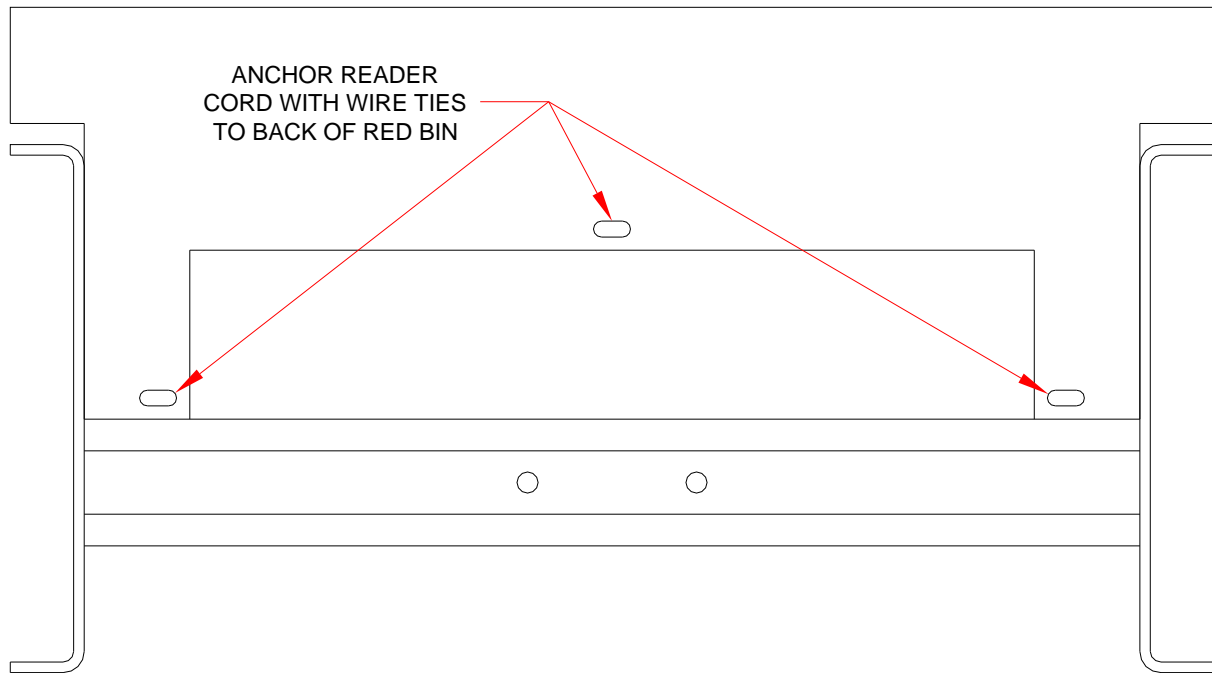


FIGURE 3

<u>TOOLS REQUIRED</u>	<u>QTY.</u>
Drill	1
7/16 Wrench	1
Screw Driver	1
3/16 Drill Bit	1
1 3/8 Punch	1
Side Cutters	1

<u>PARTS PROVIDED</u>	<u>QTY.</u>
Drawer Bracket	1
1-3/8" Modified Hole Plugs	2
1/4-20 Center Lock Nuts	2
Bin Bracket	1
4-40 Nylon Locking Nuts	4
Cable Carrier	2
1/4-20 Keps Nut	1
Medium Wire Ties	5
Lanyard	2
#10-32 Nylon Locking Nut	2
#10 Washer	4
#10-32 x 1/2 Button Head Screw	2

