



201 Grandin Road  
Maineville, Ohio 45039  
(513) 677-0500

# **Transaction Drawer Red Bin Heater Kit Manual**



# Transaction Drawer™ Heater Installation

## Table of Contents

Installation Instructions.....	1
Operation Instructions.....	2
Figure #1.....	3
Figure #2.....	4
Figure #3.....	5
Figure #4.....	6
Wiring Schematic.....	7



## **Installation Instructions**

### **Tools Needed:**

5/16” Wrench or Nut Driver  
Flat Blade Screwdriver  
1/4" Wrench or Nut Driver  
7/16” Wrench or Ratchet

### **Installation Procedure**

Disconnect power from Transaction Drawer. Activate the “In” button and then the “Out” button to discharge the board capacitor. Remove back panel from drawer. There will either be 4 screws – one in each corner of the panel – or 3 screws across the top of the panel and 2 under the bottom.

With the drawer fully retracted, remove the (2) 1/4-20 nuts connecting the TD drive nut plate to the Red Bin Assembly. (Note: Use caution when removing drive nut plate as Red Bin will slide completely out of TD Shell)

Remove Red Bin Assembly from TD Shell at Customer end. Clean the bottom surface of the bin that the heater will be applied to. Windex or similar cleaners work best. Do not use lacquer thinner or other solvents. Mark the location of the heater as shown in Figure #1. Peel the protective paper from the back of the heater and press firmly on the bottom of the drawer with the leads orientated as shown in Figure #1.

Stick a wire tie block on the bottom of the red bin as shown in Figure #2. Secure the heater lead with the wire tie provided.

Install the coiled cable assembly to the bottom of the stainless steel back top cover of the drawer as shown in Figure #2. Remove the #4-40 nut from the stud. Place the eye of the wire tie over the stud and secure with the nut so the cable section of the wire tie is between the stud and the teller/tech end of drawer shell. Secure the free end of the coiled cable and safety bar harness with the wire tie and trim off the excess of the wire tie.

Reinstall the red bin. Secure the red bin with the nut plate. It is important to properly center the bin using the nut plate. With the plate slightly loose slide the bin all the way to the right, and the plate all the way to the left. Mark with a Sharpie or pencil. Repeat to the opposite side. Center the nut plate between these marks and tighten the nuts. Place the bracket of the coiled cable assembly over the

studs against the nuts on the nut plate. Secure with the nuts provided. Connect and secure the wiring with the wire ties provided, as shown in Figure #2.

Plug coiled cable into connector cable and run the connector cable to the outside the drawer. Route and secure cable to existing drawer harness as needed.

Mount the heater power supply to the side of the drawer, drill holes if necessary with the bit provided, after checking that holes and screws will not damage or interfere with drawer operation, and secure with the #8 hex headed thread forming screws provided. (Note: the E.F. Bavis All-In-One series windows have studs provided, see Figure #3 for location)

Wire the heater power supply to a 120V circuit following NEC and all local codes. *6" 16ga leads are provided for the power connection.*

Plug the heater wire into the back of the heater power supply.

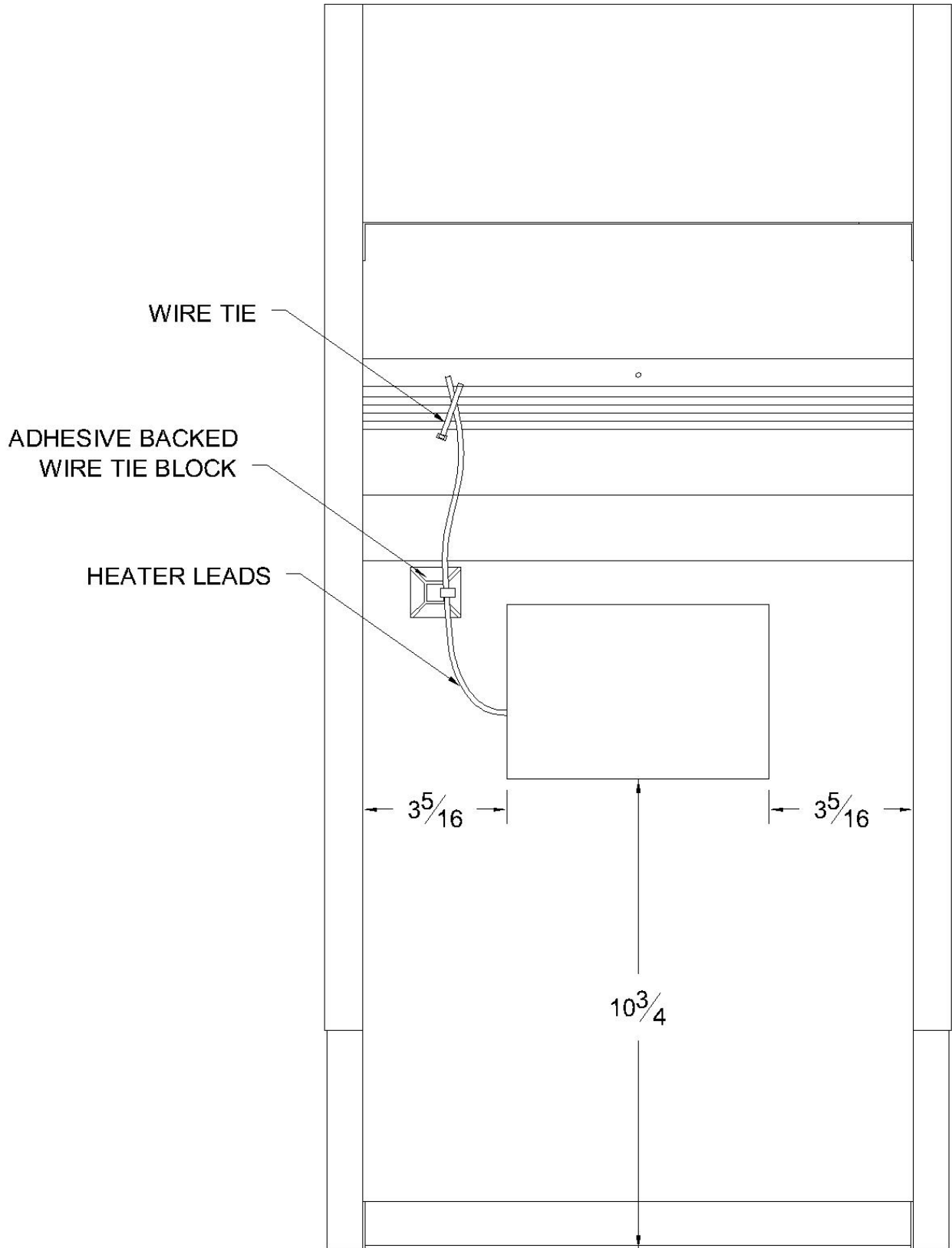
### **Heater Operation**

Turn on with the rocker switch on the face of the heater power supply. The switch should illuminate.

The drawer will get warm to the touch. The heater is powered from low voltage and protected by a 4 amp *circuit breaker* in the heater power supply. The heater is controlled by a non-adjustable thermostat. A non replaceable over-temperature device is built in to the heater to protect against thermostat failure.

### **Parts Supplied:**

<b><u>ITEM</u></b>	<b><u>DESCRIPTION</u></b>	<b><u>QTY.</u></b>
1	TD Heater	1
2	Wire Tie Block	1
3	Wire Ties	6
4	Coiled Cable Assm.	1
5	¼" nuts	2
6	Heater Power Supply	1
7	#8 Thread rolling screws	4
8	#6 nuts	4
9	Orange wire nuts	3
10	9/64" drill bit	1
11	Strain relief	1
12	18-3 Power cord	1



UNDERSIDE VIEW OF RED BIN  
FIGURE #1

REMOVE AND REPLACE  
WIRE TIE

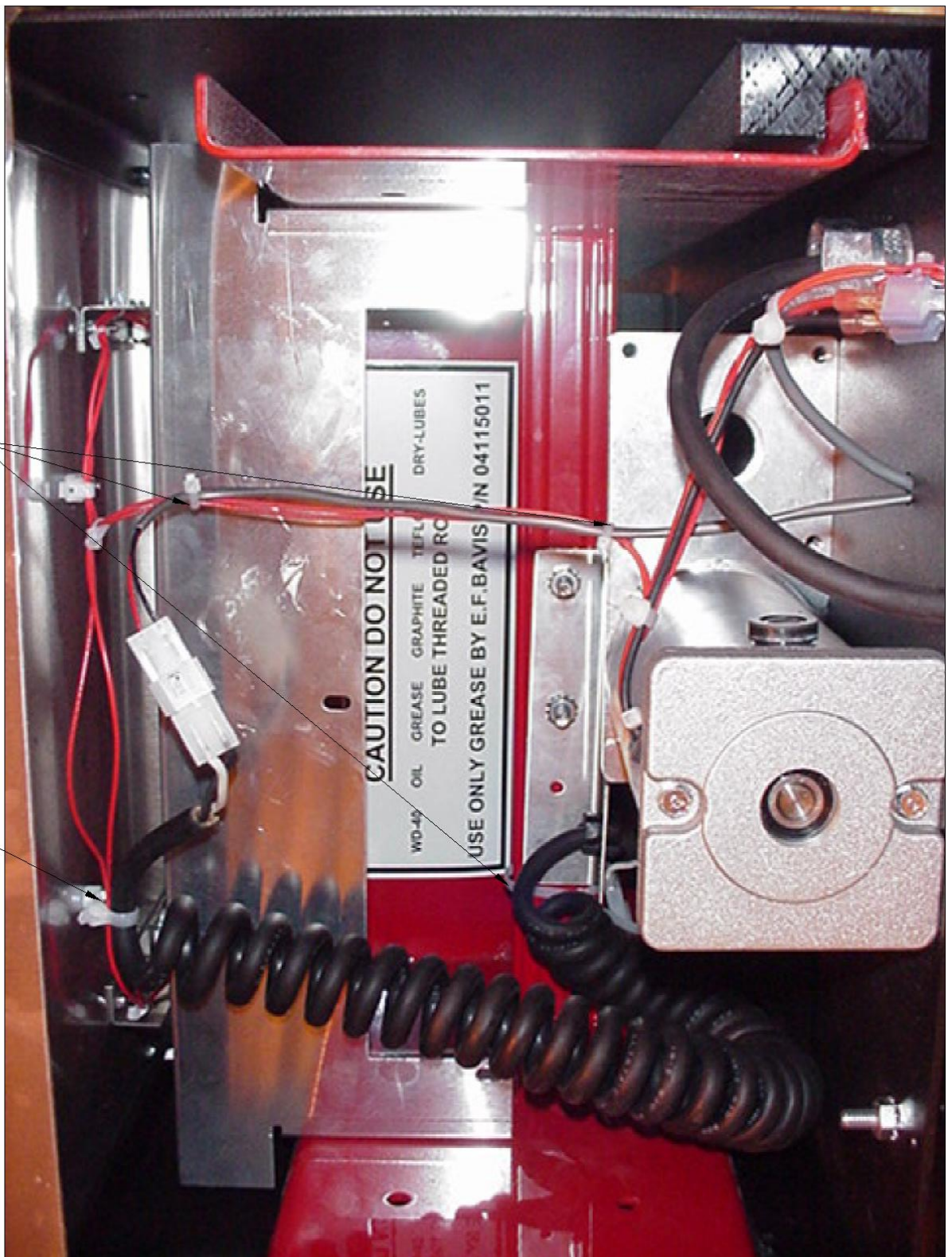
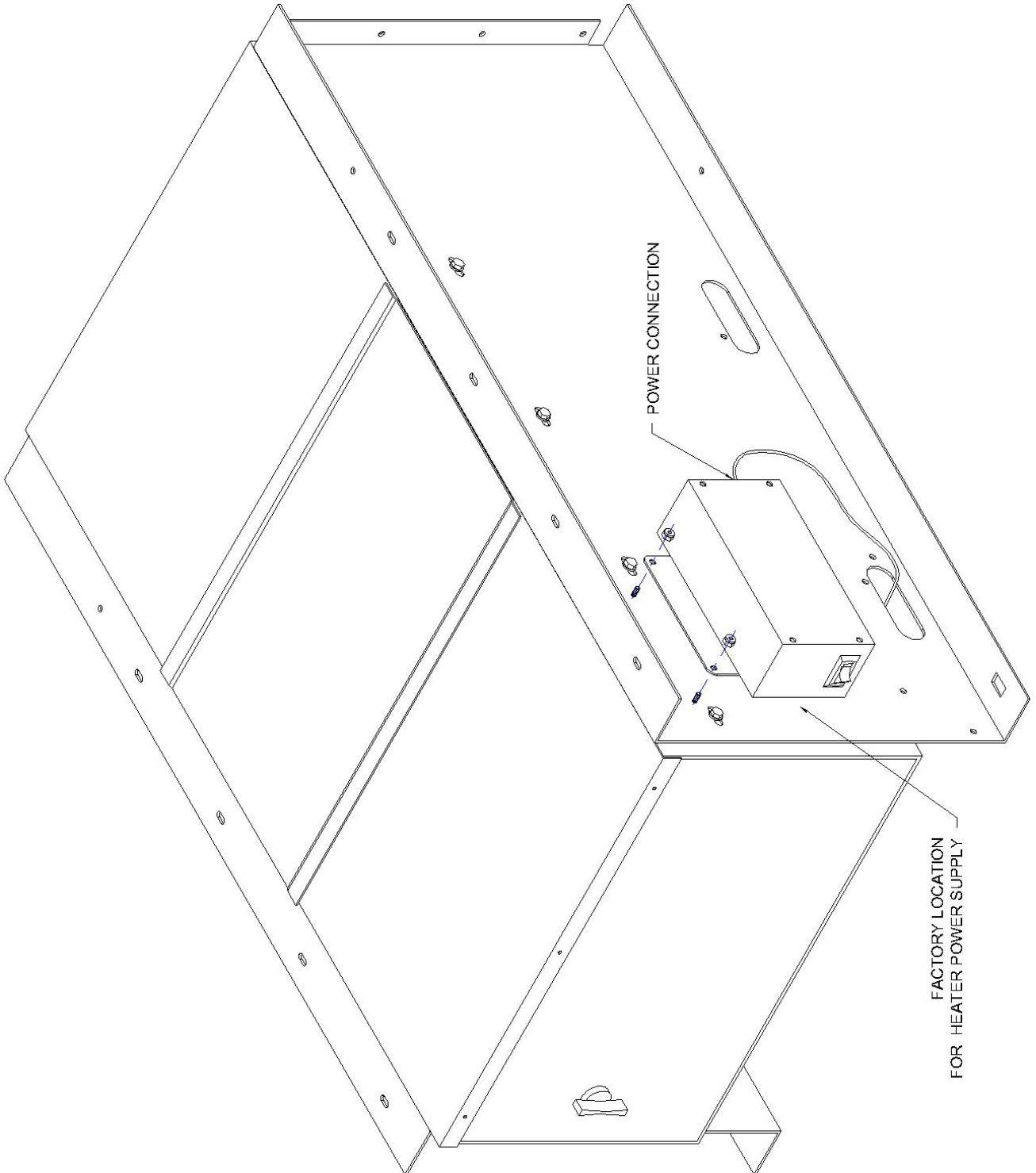
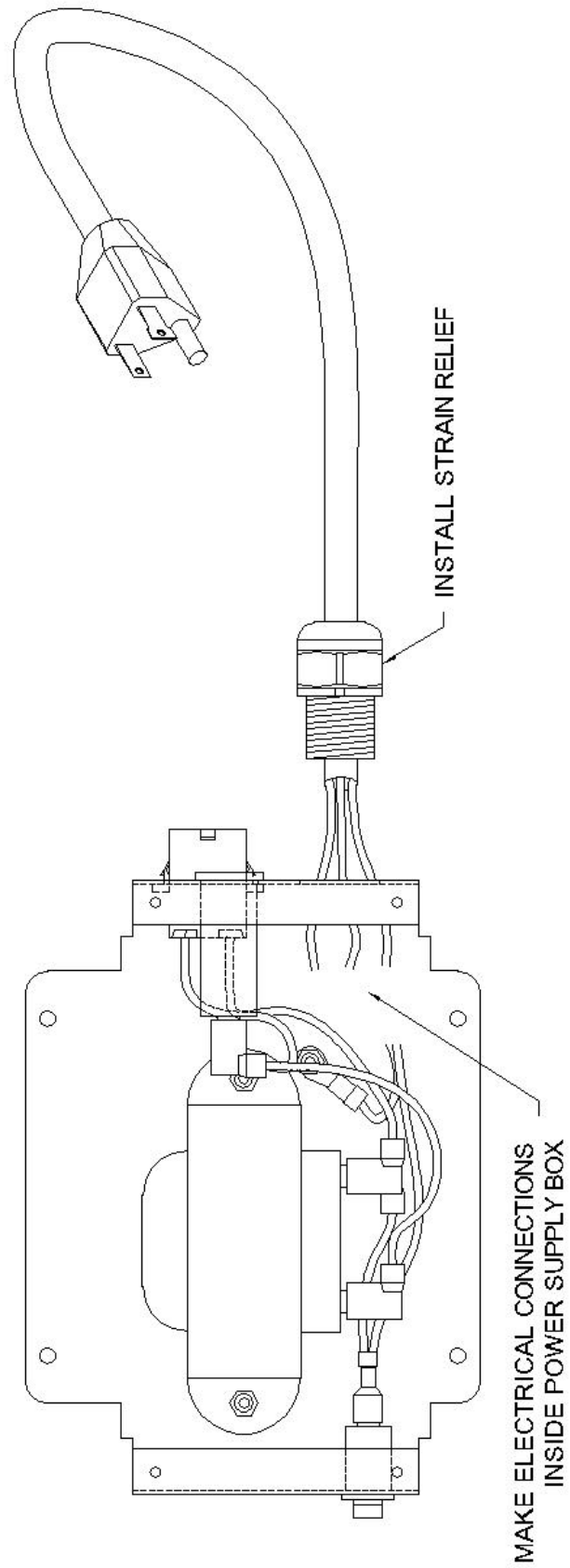


FIGURE #2

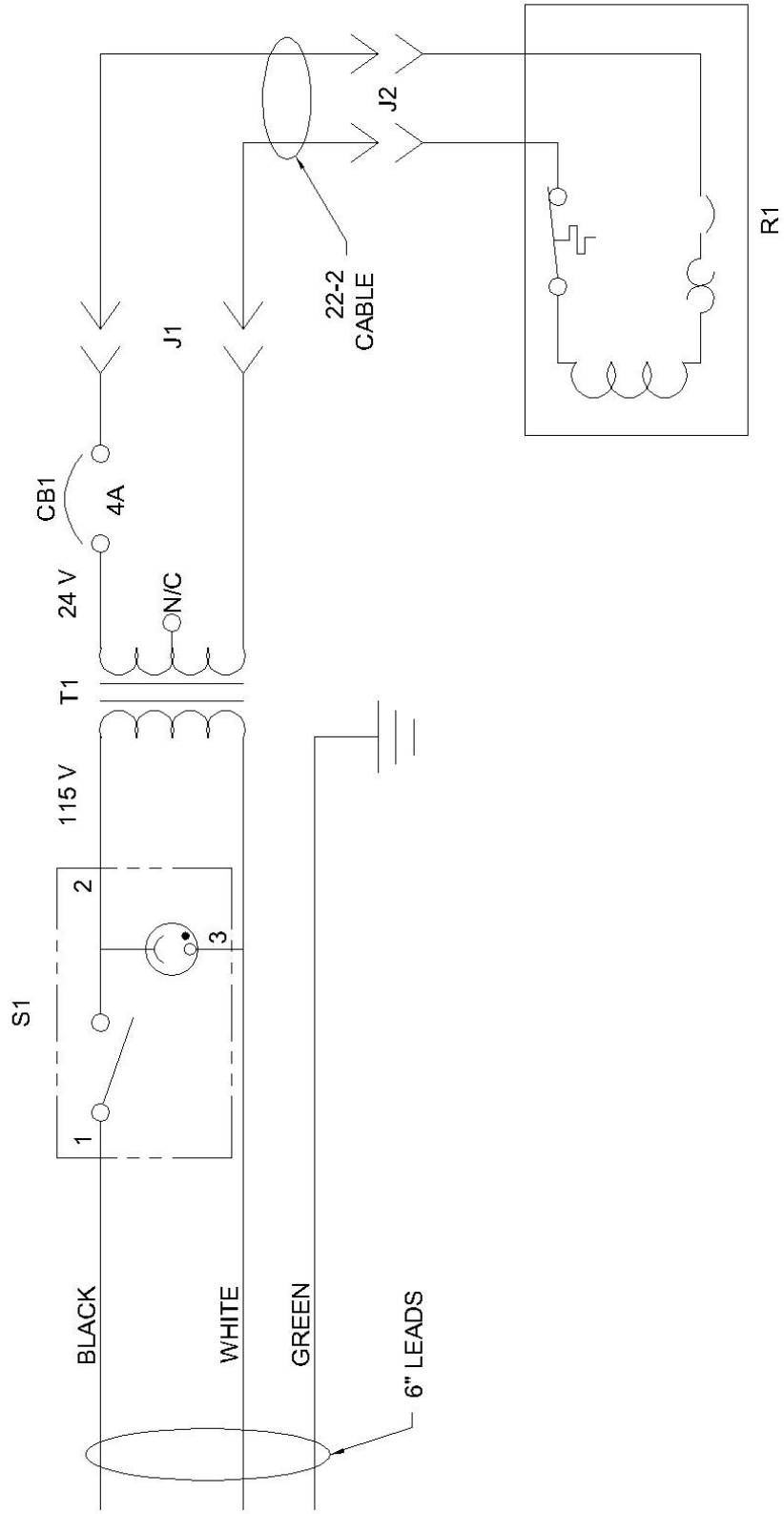




**FIGURE #3**



**FIGURE #4**



**WIRING SCHEMATIC**