

---

# **Transaction Drawer™ Customer Door Arm Replacement Instructions**

---

**E. F. Bavis & Associates, Inc.**

---

201 Grandin Road  
Maineville, Ohio 45039  
(513) 677-0500

# Table of Contents

Tool and Parts List.....	1
Installation Instructions .....	1
Figure 1.....	3
Figure 2.....	4
Figure 3.....	5

**Tools Needed:**

5/16" Wrench or Nut Driver

Flat Blade Screwdriver

Loctite 242 (Blue) Thread Locker

If Drawer has a Travel Limit Bracket You will also need:

1/4" Wrench or Nut Driver

7/16" Wrench or Ratchet

**Parts: Supplied**

1 Set – Customer Door Arms

2 – 1/2" "E" Clip

4 – 1/2" Flat Washers

1 – Tube of Grease

**Installation Procedure:****Check for a Travel Limit Bracket**

Run the Drawer to full extension. If the Red Bin does not go out far enough that the Customer Door Arm Pivots are accessible, the Drawer is equipped with a Travel Limit Bracket. This Limit Bracket will stop the Drawer at 14" of extension.

**If equipped with Travel Limit Bracket**

Run the Drawer back in, but not fully closed.

Remove the Back Panel from the Drawer by removing the (3) screws across the top of the panel and the (2) screws from under the bottom. Pull the bottom of the Panel out from the Drawer Shell and then lower it until the top clears the Stainless Steel flange, rotate and secure to the bottom of the Drawer Shell so the wiring will not be damaged.

Remove the (2) 7/16" nuts that secure the Drive Nut Plate to the Red Bin Assembly, (see Fig. 1). (Note; Use caution when removing the last nut, as the teller door tends to push the Red Bin to the outside and the Bin may slide all the way out of the Drawer Shell.)

By hand push the Red Bin to the outside until the Customer Door Arm Pivot and "E" clips can be accessed.

**Replacing the Customer Door Arms**

From the customer end of the Drawer, use a flat blade screwdriver to remove the (2) "E" clips at the pivot end of the Arms and the outer Flat Washers, (see Fig. 2).

Gently bow the Arms outward until they clear the end of the Pivot, and then remove the Customer Door and Arm Assembly from the Red Bin Assembly.

Place the Customer Door on a surface that will not damage the front face. Using the 5/16" Wrench or Nut Driver, remove the (6) 8-32 Acorn Nuts that secure the Arms to the Door.

Install the new Arms in place with the long sloped edge to the bottom of the Customer Door.

Place a drop of Loctite 242 on each of the studs and install and tighten the 8-32 Acorn Nuts.

Wipe off the long sloped edge and the bottom of the Arms near the back of the Customer Door and apply a thin film of the Grease provided. Wipe off and lube the hole for the pivot, and apply a thin film on both sides of the Arms, the Pivot hole, where the Flat Washers will contact the Arm.

#### Re-installing the Customer Door and Arm Assembly

Inspect the 1/2" Flat Washers for wear, rust, corrosion and damage and replace if necessary. (Note: For proper Door alignment there should be one Washer inboard and one Washer outboard of each Arm.)

Gently bow out the Customer Door Arms and place over the Pivot making sure that the Brass Limit Pin is above the flange on the bottom of the Red Bin.

Install the outer 1/2" Flat Washer and new "E" Clip on each side.

Clean the top outer 4-5" of the plastic Guide Track on both sides of the Drawer. Apply a small amount of Grease to the top outer corner of the Guide Track where the Customer Door Arm will slide.

(Note: It is highly recommended that the remaining slide points be wiped clean and lubed with the remaining Grease as per Fig. 3.

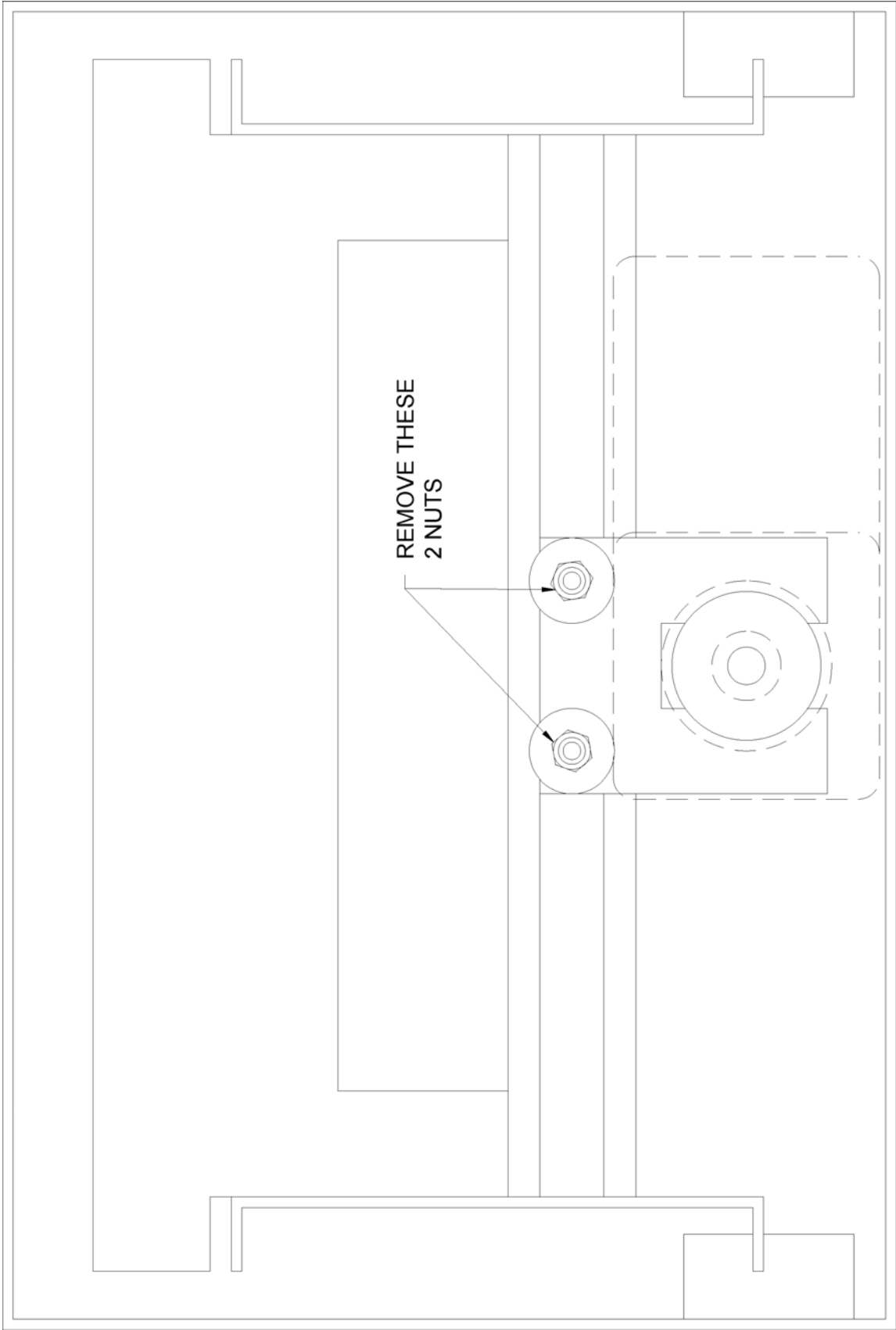
#### For Drawer with a Travel Limit Bracket

Slide the Red Bin back into Drawer Shell and reconnect the Red Bin to the Drive Nut Plate. Before tightening the nuts, verify that the Red Bin is centered, left to right, in the Guide Track slot.

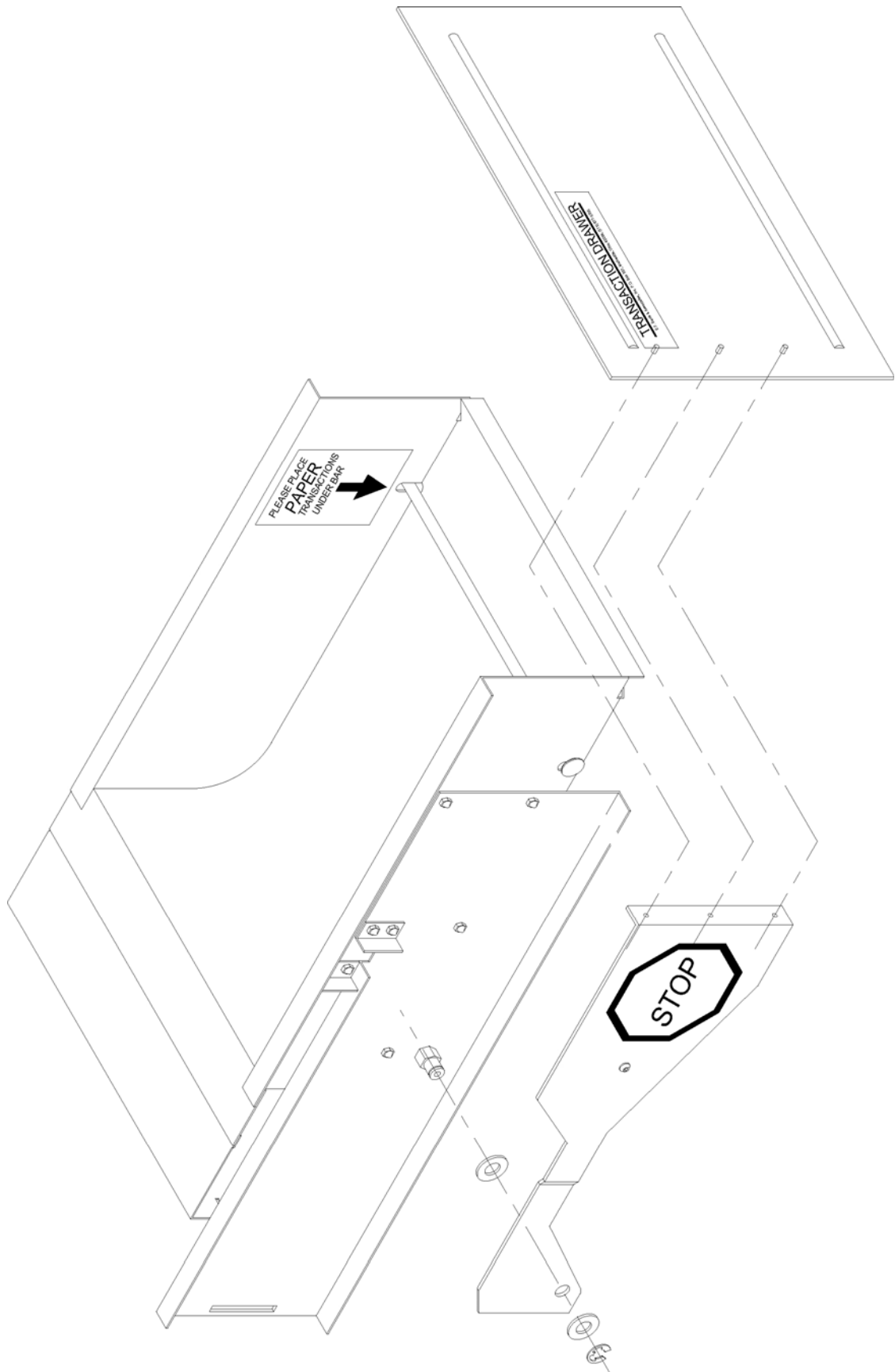
Re-install the Back Panel.

#### Test operation.

Verify that the Customer Door opens and closes freely and fully. Check to see that the Door Gasket seats against the outer edge of the Drawer Shell and that the Lock works.

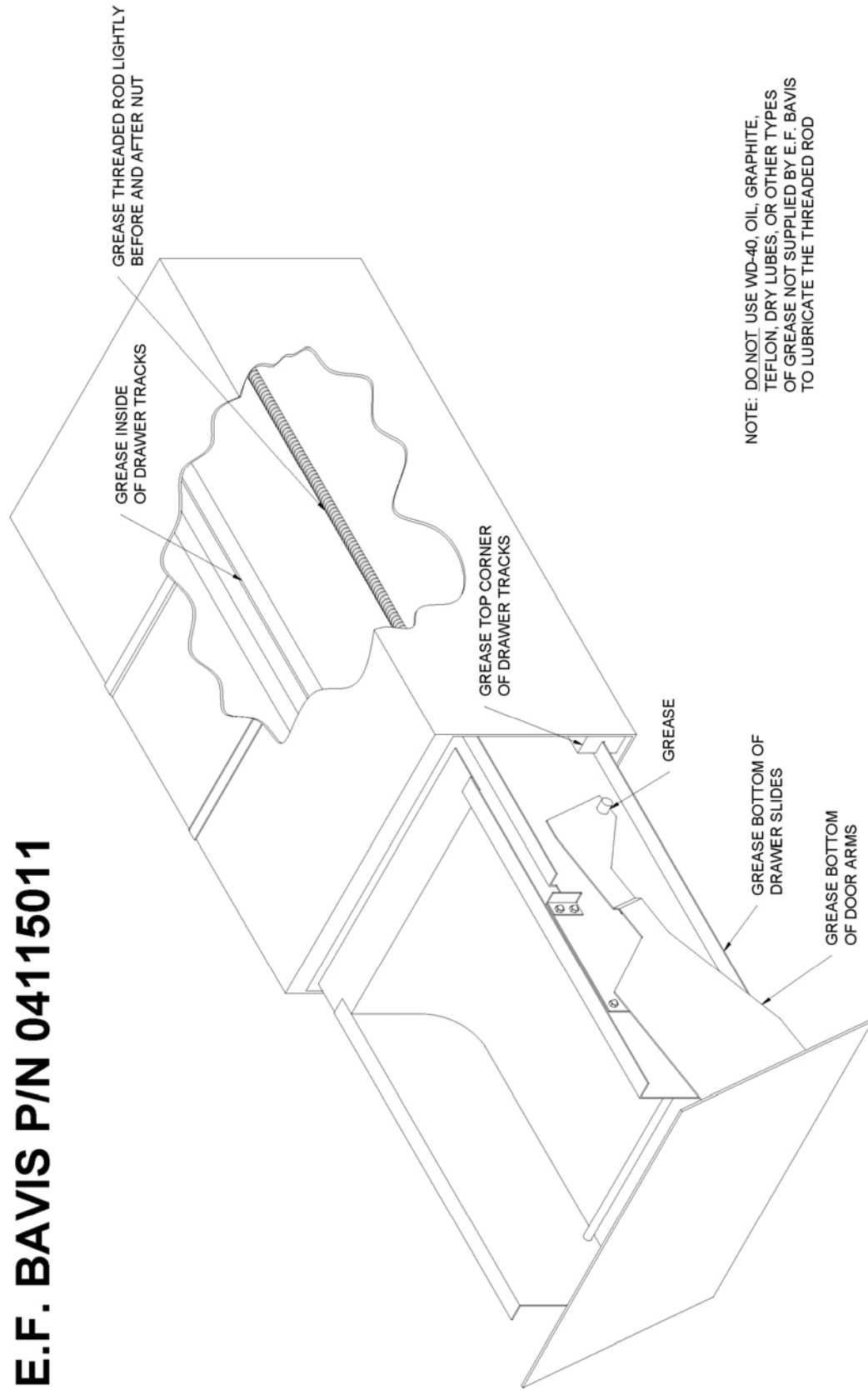


**Fig 1**



**Fig 2**

# USE ONLY GREASE SUPPLIED BY E.F. BAVIS P/N 04115011



NOTE: DO NOT USE WD-40, OIL, GRAPHITE, TEFLON, DRY LUBES, OR OTHER TYPES OF GREASE NOT SUPPLIED BY E.F. BAVIS TO LUBRICATE THE THREADED ROD

Fig 3