
TransTrax[®] and TransTrax[®] Model II Skin Assembly Manual

E. F. Bavis & Associates, Inc.

201 Grandin Road
Maineville, Ohio 45039
(513) 677-0500

TransTrax[®] and TransTrax[®] Model II

Table of Contents

TransTrax [®] Skin Shipping Manifest.....	1
TransTrax [®] II Skin Shipping Manifest	2
TT HO Skin Buttons Left Shipping Manifest.....	3
TT HO Skin Buttons Right Shipping Manifest.....	4
TransTrax [®] Optional Skin Installation Instructions	5
Speaker Panel Diagram.....	6
Speaker Connection Diagram	7
Skin Mounting Diagram	8
Ceiling Flange Mounting Diagram	9

TTHO Skin

TT HO Skin Buttons Left Diagram	10
TT HO Skin Buttons Right Diagram	11
TT HO Optional Skin Installation Instructions.....	12

TransTrax[®] Skin Shipping Manifest
STD TT Skin Part # 04031992

Qty.	Description	Part Number	
1	Speaker Extension Harness	01022011	_____
1	TT Skin Lid	04031013	_____
1	STD TT Skin with bumper	04031222	_____
1	TT Ceiling Flange	04031052	_____
1	Speaker Mounting Plate	09033012	_____
5	#4-40 nuts	91005001	_____
3	#8 x 1/2 flathead sheet metal screws	93080123	_____
25	#8 Self-Drilling Screws	93101623	_____
4	1" x 8 SST pan head sheet metal screws	93160623	_____
1	Speaker Blank Plate	04170011	_____
1	Skin Assembly Manual	00664011	_____

TransTrax[®] II Skin Shipping Manifest

TT Model II Part # 04031993

Qty.	Description	Part Number	
1	Speaker Extension Harness	01022011	_____
1	TT Skin Lid	04031013	_____
1	TT-2 Skin with bumper	04031223	_____
1	TT Ceiling Flange	04031052	_____
1	Speaker Mounting Plate	09033012	_____
5	#4-40 nuts	91005001	_____
3	#8 x 1/2 flathead sheet metal screws	93080123	_____
25	#8 Self-Drilling Screws	93101623	_____
4	1" x 8 SST pan head sheet metal screws	93160623	_____
1	Speaker Blank Plate	04170011	_____
1	Skin Assembly Manual	00664011	_____

TransTrax[®] HO Skin Shipping Manifest

Buttons Left

Part # 04031997

Qty.	Description	Part Number	
1	Speaker Extension Harness	01022011	_____
1	TT HO Skin Lid	04074011	_____
1	TT HO Skin buttons left	04073011	_____
1	TT HO Ceiling Trim	04076011	_____
2	TT HO Skin Pan	04075011	_____
1	TT HO Skin Filler Panel	04077011	_____
1	TT Speaker Blank Plate	04170011	_____
1	Speaker Mounting Plate	09033012	_____
10	#4-40 Nylon Locking Nuts	91025001	_____
20	#8 x 1/2" Self-Drilling Screws	93101623	_____
1	Skin Assembly Manual	00664011	_____

TransTrax[®] HO Skin Shipping Manifest

Buttons Right

Part # 04031996

<u>Qty.</u>	<u>Description</u>	<u>Part Number</u>	
1	Speaker Extension Harness	01022011	_____
1	TT HO Skin Lid	04074011	_____
1	TT HO Skin buttons right	04073021	_____
1	TT HO Ceiling Trim	04076011	_____
2	TT HO Skin Pan	04075011	_____
1	TT HO Skin Filler Panel	04077011	_____
1	TT Speaker Blank Plate	04170011	_____
1	Speaker Mounting Plate	09033012	_____
10	#4-40 Nylon Locking Nuts	91025001	_____
20	#8 x 1/2" Self-Drilling Screws	93101623	_____
1	Skin Assembly Manual	00664011	_____

TransTrax[®] Optional Skin

Note that the customer CEILING TRIM that contains the flaps is not used in conjunction with the skin kit.

Installation Procedures:

This skin kit is of a two-piece design that makes installation much easier and includes a lid that gives full coverage for the backside of the customer unit. The skin comes 12' tall as standard, which has eliminated the need for extensions on very tall installations.

Remove the *CUSTOMER SPEAKER PANEL* and then remove the speaker from it. The speaker will get reattached to the speaker plate with the #4-40 nuts provided.

Cut both the skin and lid to suit the site requirements. Be sure to protect the powder-coated surfaces with duct tape to prevent scratches when cutting. Cut the amount equal to the height of the island off of the *BOTTOM* of the skin, and then cut the amount off of the *TOP* of the skin necessary to fit under the canopy ceiling.

Note that the *TT CEILING FLANGE* should be slipped over the skin and customer tube during this step, as it will need to be installed later. Mount the back of the two-piece skin to the back of the tubing with the sheetmetal screws provided. The "C" skin then goes around the *CUSTOMER VERTICAL TUBE* and control panel and mounts to the skin back. As always, be careful if pre-drilling screw holes or driving screws to not hit any of the wiring.

Mount the speaker filler plate over the speaker grid on the inside of the *CUSTOMER SPEAKER PANEL* with the 4-40 nuts provided. Remove the speaker harness from the audio board. The speaker harness is attached to the audio board with a locking connector. Use a small screwdriver to unlock the connector. Attach the speaker extension harness to lengthen the harness between the audio board and speaker. Run the speaker extension harness down the tape slot of the customer vertical. Attach the *CUSTOMER SPEAKER PANEL* back on the customer vertical being careful not to run the bottom flat head screw into or pinching the speaker extension harness. See diagram on page 6.

Run the speaker extension harness through the skin and connect to the speaker harness extending from the speaker on the audio board. Mount the plate to the face of the skin with the sheet metal screws provided.

Install the *TT CEILING FLANGE* to the tubing with the self-drilling sheet metal screws provided and to the skin on the outer face of the skin (see page 9). Then attach the ceiling flange to the ceiling.

Note: The square trim bottom panel and the *TT CEILING FLANGE* are necessary to prevent the skin from twisting and interfering with the carrier

Speaker Panel Diagram



RUN THE SPEAKER
EXTENSION CABLE
OUT THE BOTTOM
OF THE SPEAKER PLATE

MOUNT THE SPEAKER PANEL
THE SAME WAY AS YOU
REMOVED IT.

BE SURE THAT YOU
DO NOT CUT OR PINCH
THE SPEAKER EXTENSION
CABLE WHEN TIGHTENING
THE FLAT HEAD SCREW.

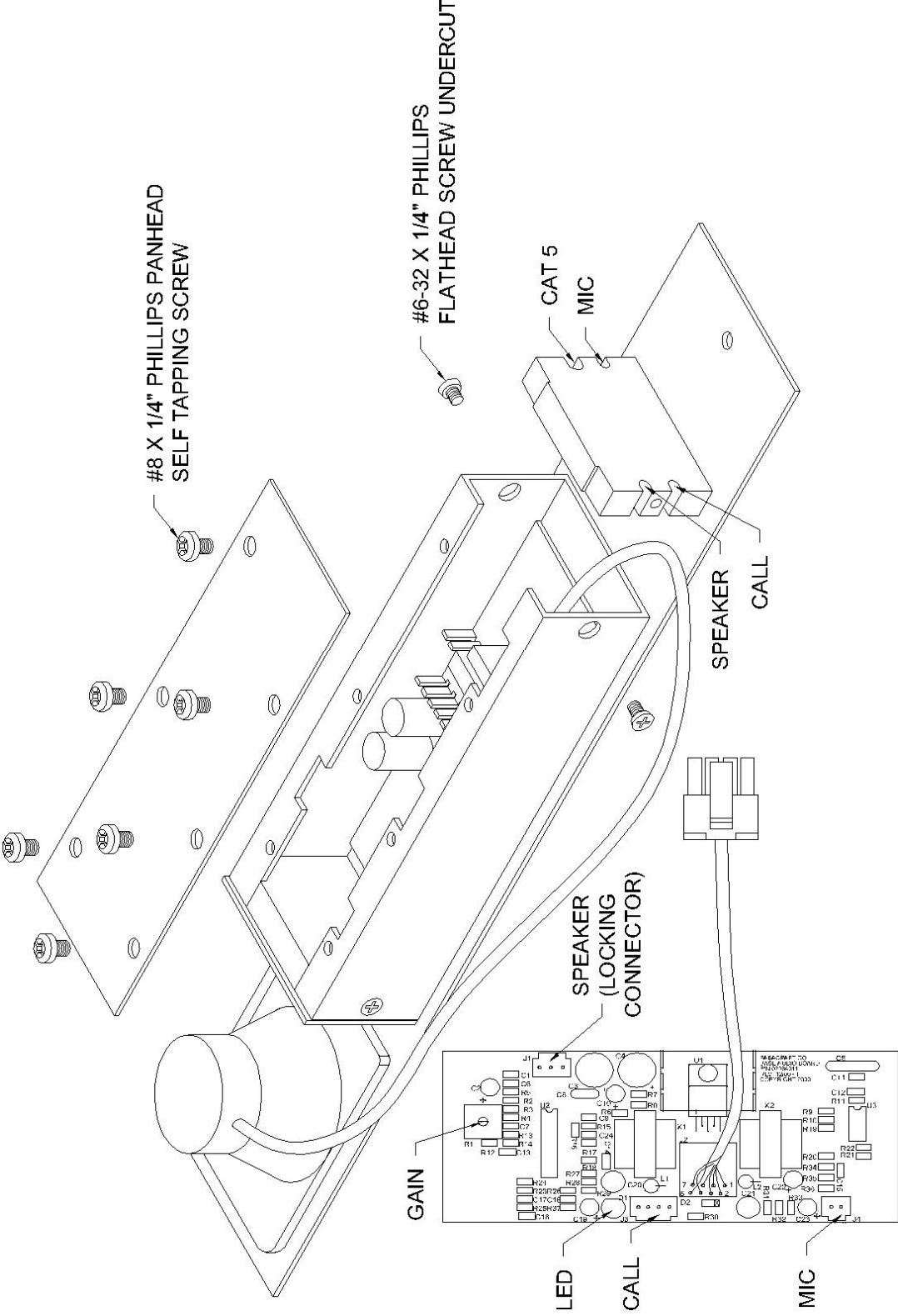
CONNECT THE SPEAKER
EXTENSION CABLE TO THE
SPEAKER HARNESS COMING
FROM THE CUSTOMER SPEAKER.

CUSTOMER SPEAKER
PANEL

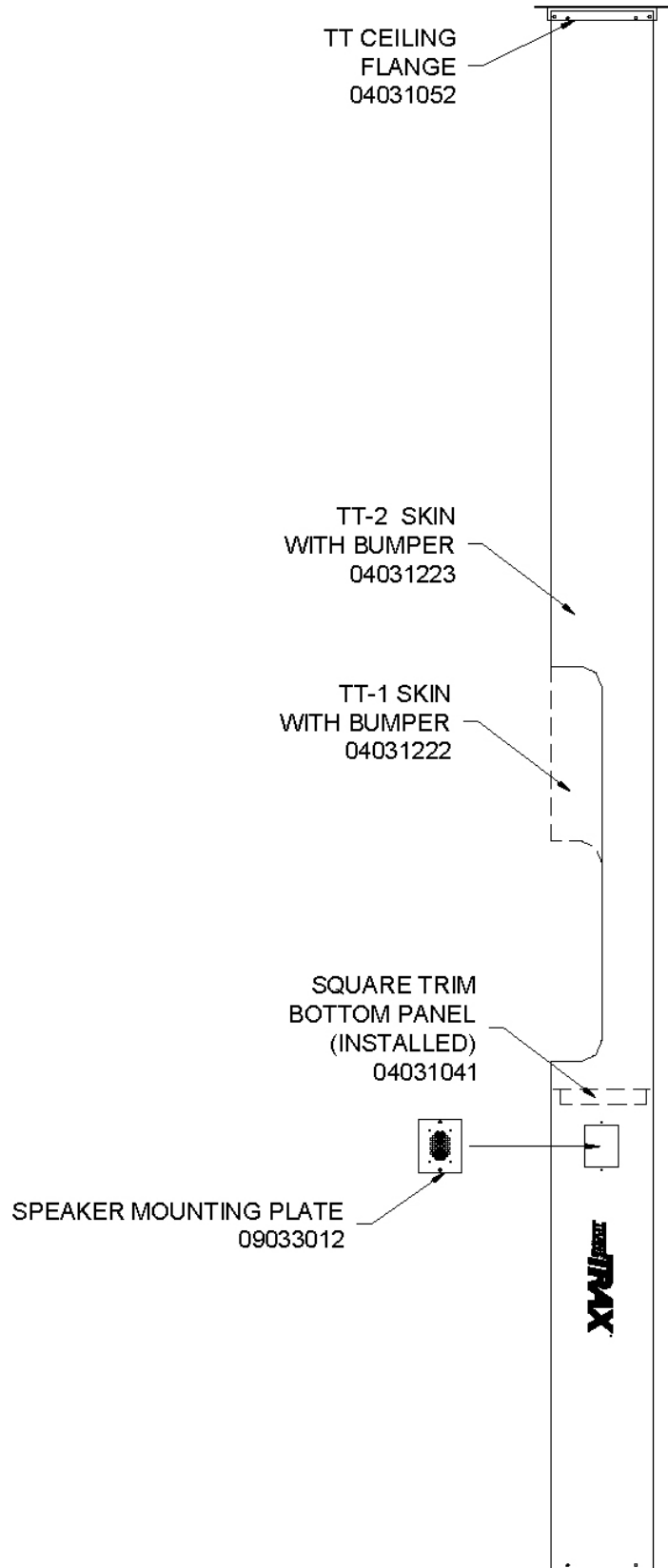
FLATHEAD
SCREW

SPEAKER EXTENSION
HARNESS

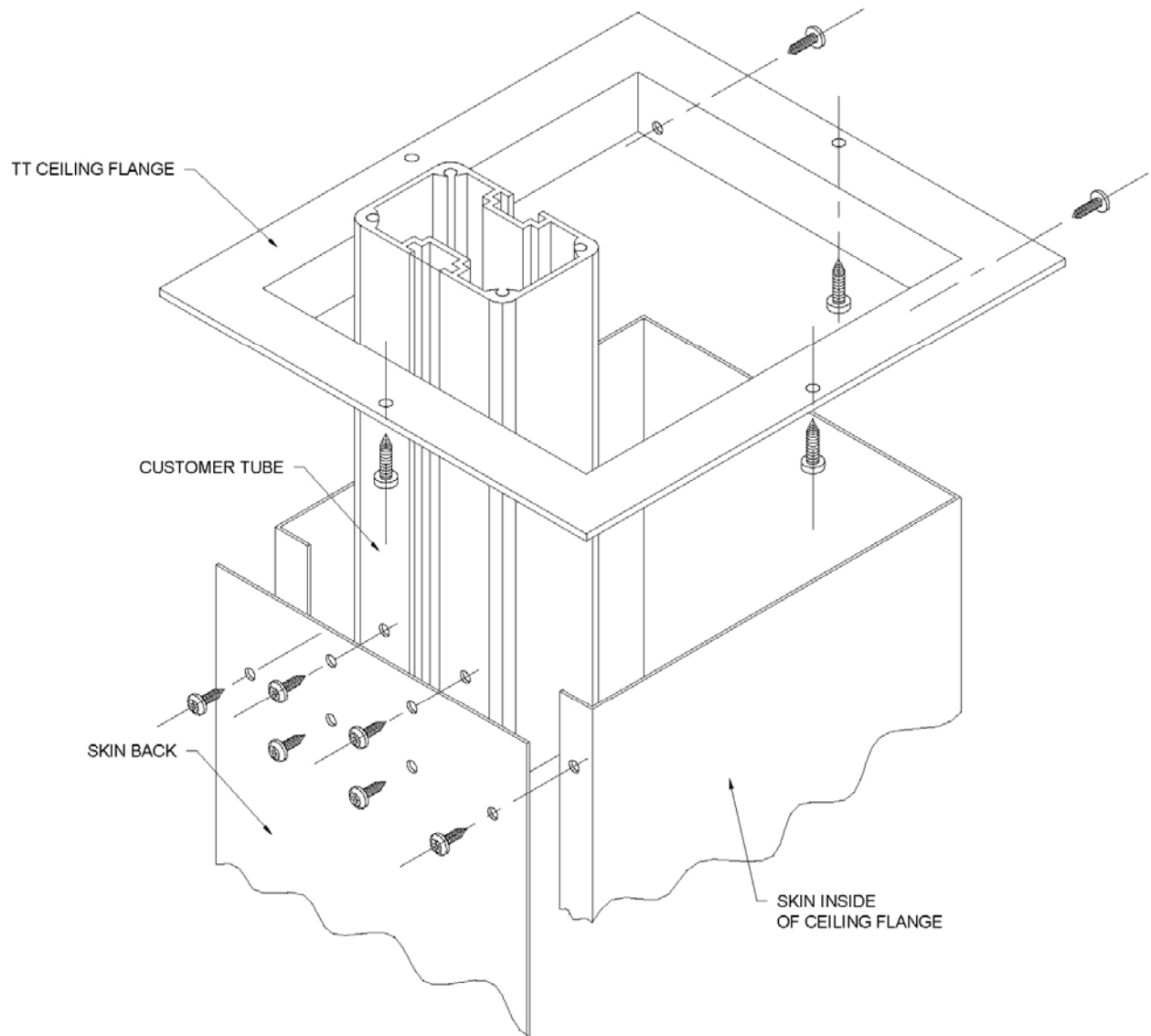
Speaker Connection Diagram



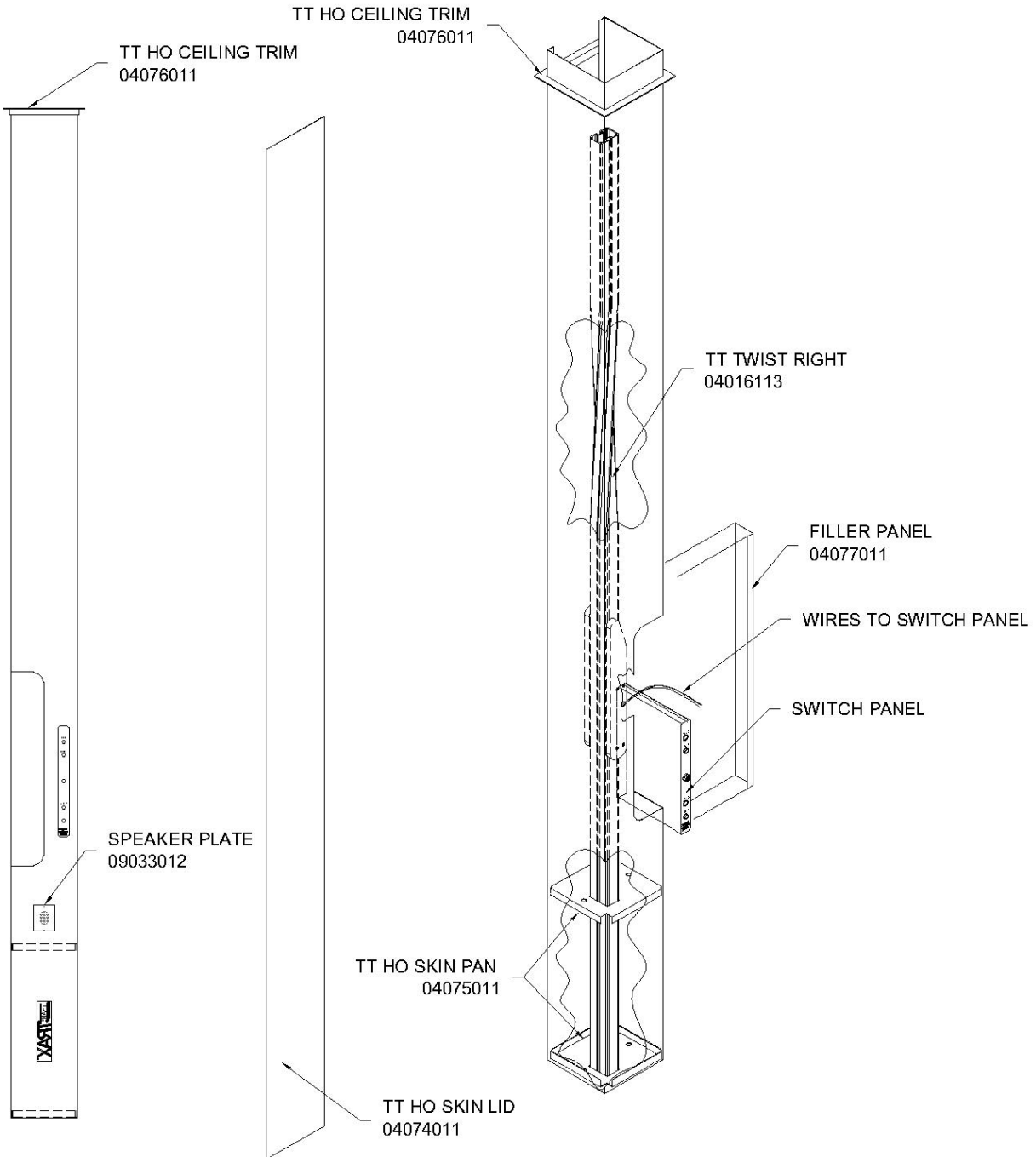
Skin Mounting Diagram



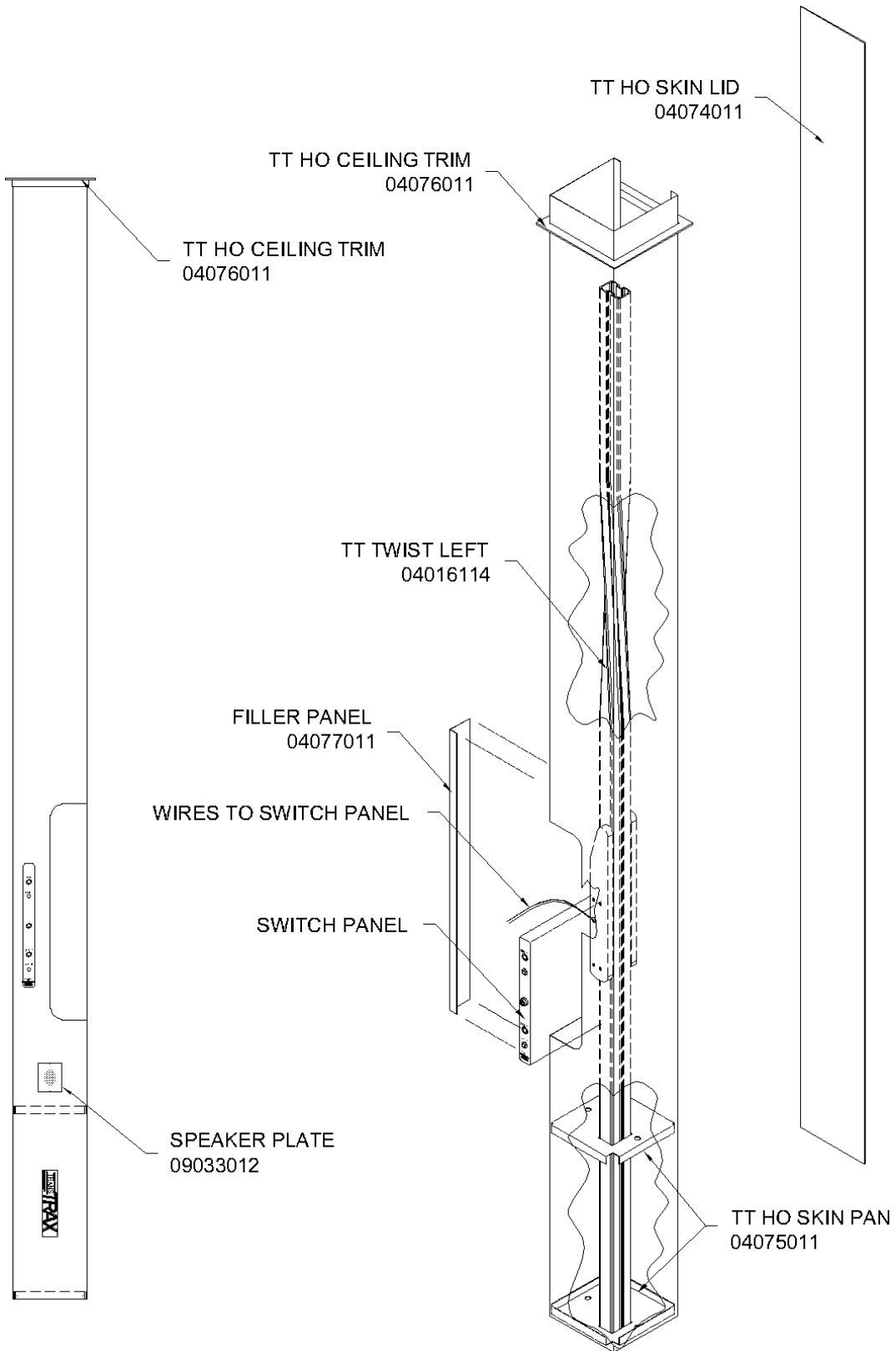
Ceiling Flange Mounting Diagram



TT HO Skin Buttons Left Diagram



TT HO Skin Buttons Right Diagram



TTHO Optional Skin Installation Instructions

Note that the customer CEILING TRIM that contains the flaps is not used in conjunction with the skin kit.

Installation Procedures:

This skin kit is of a two-piece design that makes installation much easier and includes a lid that gives full coverage for the backside of the customer unit. The skin comes 12' tall as standard, which has eliminated the need for extensions on very tall installations.

Remove the *CUSTOMER SPEAKER PANEL* and then remove the speaker from it. The speaker will get reattached to the speaker plate with the #4-40 nuts provided.

Cut both the skin and lid to suit the site requirements. Be sure to protect the powder-coated surfaces with duct tape to prevent scratches when cutting. Cut the amount equal to the height of the island off of the *BOTTOM* of the skin, and then cut the amount off of the *TOP* of the skin necessary to fit under the canopy ceiling.

Note that the *TTHO CEILING FLANGE & SKIN PANS* should be slipped over the customer tube during this step, as it will need to be installed later. The "C" skin then goes around the *CUSTOMER VERTICAL TUBE & SKIN PANS* and mounts to the skin back. As always, be careful if pre-drilling screw holes or driving screws to not hit any of the wiring.

Mount the speaker filler plate over the speaker grid on the inside of the *CUSTOMER SPEAKER PANEL* with the 4-40 nuts provided. Remove the speaker harness from the audio board. The speaker harness is attached to the audio board with a locking connector. Use a small screwdriver to unlock the connector. Attach the speaker extension harness to lengthen the harness between the audio board and speaker. Run the speaker extension harness down the tape slot of the customer vertical. Attach the *CUSTOMER SPEAKER PANEL* back on the customer vertical being careful not to run the bottom flat head screw into or pinching the speaker extension harness. See diagram on page 6.

Run the speaker extension harness through the skin and connect to the speaker harness extending from the speaker on the audio board. Mount the plate to the face of the skin with the sheet metal screws provided.

Install the *TT CEILING FLANGE* to the tubing with the self-drilling sheet metal screws provided and to the skin on the outer face of the skin (see page 9). Then attach the ceiling flange to the ceiling.

Note: The *HO SKIN PANS* and the *TT CEILING FLANGE* are necessary to prevent the skin from twisting and interfering with the carrier.