
BavSonic™ Transaction Drawer™ Audio Panel

Installation and Service Manual

E. F. Bavis & Associates, Inc.

201 Grandin Road
Maineville, Ohio 45039
(513) 677-0500

BavSonic™ Transaction Drawer™ Audio Panel

Table of Contents

Installation Instructions.....	1
Fig. 1	3
Fig. 2	4
Installation and Service Tool List.....	5

BavSonic™ TD Customer Audio Panel Installation Instructions

To add audio to the Bavis *Transaction Drawer™* requires purchasing and installing a separate Customer Audio Panel. The customer audio components are housed in a 16ga powder coated steel enclosure. There are two aluminum mounting plates, an electret condenser microphone, a closed back speaker, and one call button. These components mount around the drawer and to the wall, which reduces the size of the masonry opening and allows unobstructed service from the outside.

To install these components requires mounting the drawer 2" to 2-1/8" further out the wall so that the edge of the drawer shell is 1/32" to 1/16" out past the face of the audio panel. There are ten mounting holes in each aluminum backplate. The mounting plates can also be bolted to the drawer shell using 8-32 x 3/8" thread roller screws into the row of holes 1-1/8" from the front of shell. **Note:** Use only #8-32 x 3/8" thread forming screws to mount audio panel back plates to drawer shell. (See fig. 2)

It will be necessary to remove the customer door of the *Transaction Drawer™* to install the audio panel. To remove the customer door, run the drawer out until the teller door is closed and the customer door pivot posts are exposed. Carefully remove the "E" clips from each side. Take the arms off of the pivot posts by gently spreading the customer door actuator arms outward until they clear the pivot posts. Remove the customer door. Reverse the steps to reinstall the customer door. **Note that there should be one washer inside and one washer outside each arm before reinstalling the "E" clips.**

- 1) Remove the aluminum backplates from the panel by removing the four screws that hold them in place.
- 2) Mount back panels to drawer shell using hardware provided.
- 3) Mount the aluminum backplates to the wall.
- 4) Drill a hole(s) for the wiring. Note: If it is necessary to chase the wiring from one side of the audio panel to the other, there is room at the bottom of the audio panel. Secure the wires up with duct tape to the bottom of the drawer to prevent them from getting pinched or damaged, and then feed the wires into the building.
- 5) Attach the audio panel to the aluminum backplates with the four screws removed in step 1.
- 6) Reinstall the customer door.
- 7) For additional security, there are holes for eight optional mounting screws around the periphery of the audio panel. We provide self-drilling sheet metal screws and covers for this purpose.

Note: When using a One on One console, skip steps 8 and 9. The wires from the audio panel will plug into their respective jacks inside the console. Both the incoming, and outgoing audio volume controls are located on the one on one board inside the console. Use the 3/8" wire loom provided to "dress up" the wires going into the console.

- 8) Locate and mount the remote base audio assembly box in an area where it will have easy access in case of future service needs.
- 9) Chase and connect red cat 5 cable (provided) to the inside countertop unit.
- 10) Test audio. If more volume is required, the gain control for the outgoing signal is located inside the remote base audio assembly box. For the incoming signal, the gain control is located inside the countertop console.
- 11) Test the drawer to make sure that it operates properly both in and out without dragging or binding on the audio panel, and that door gasket seals to drawer shell edge and is not stopped by audio panel face and/or mounting screws.

Note: If using a stainless steel audio panel, part # 15 on the diagram will be 98006003.

ITEM	PART #	DESCRIPTION	QTY
1	00207012	CALL BUTTON LABEL,POLYESTER	1
2	00319689	CALL BUTTON AND NUT	1
3	00540016	CUSTOMER AUDIO COVER	1
4	0541012	CUSTOMER AUDIO BACKPLATE	2
5	01613011	TD CUSTOMER AUDIO HARNESS	1
6	01802991	REMOTE BASE AUDIO ASSEMBLY	1
7	02909991	2" X 3" SPEAKER WITH HOLES	1
8	02909051	2" X 3" SPEAKER BACK BOX	1
9	02912991	SCREW IN MICROPHONE	1
10	91005001	#4-40 KEPS NUT	4
11	92062723	#6-32 X 3/8" PHIL. HEAD SCREW	4
12	93009005	SCREW COVER, BLACK	8
13	93064321	#8-32 HEX WASHER HD. SCREW	8
14	93101621	#8 X 5/8" PHIL. PAN HEAD SCREW	8
15	98006004	STAINLESS STEEL WASHER	1
16	99015001	PAL NUT	1
17	00853031	RED CAT 5 CABLE, 14' LONG	1
18	07614031	10' MIC EXTENSION CABLE	1

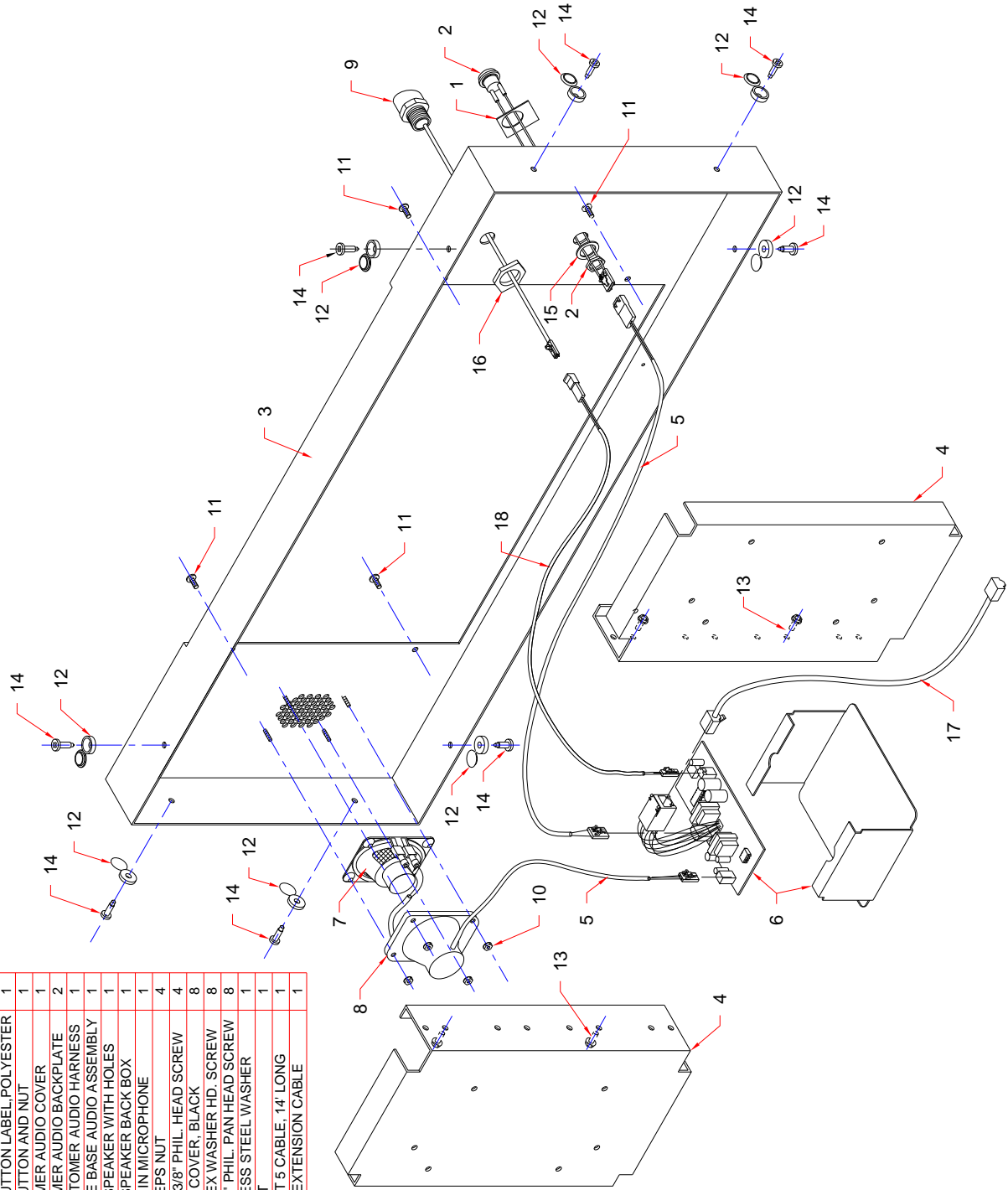


Fig. 1

P/N 00596011

WARNING

USE ONLY #8-32 X 3/8" HEX HEAD SCREW
TO MOUNT THIS PART TO THE DRAWER SHELL

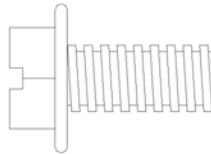


Fig. 2

Installation and Service Tool List For Audio

1/8" And 3/8" Flathead Screwdrivers
#0 And #2 Phillips Screwdrivers
1/16" And 3/32" Allen Wrenches
1/2" Open-End Wrench
1/4", 5/16", 11/32", 3/8", And 1/2" Nut Drivers
Wire Cutters
Wire Strippers
Wire Crimpers
Volt Meter
Electric Drill
Drill Bits
Level
7/8" Unibit
Fish Tape
Loctite

