



201 Grandin Road
Maineville, Ohio 45039
(513) 677-0500

**Standard Manual Drawer
(Belt Drive Version)
Installation and Service Manual**

Copyright 2018 E. F. Bavis & Associates, Inc.
All Right Reserved

Revised: 08/08/2018
PN: 00636021

Manual Transaction Drawer™

Table of Contents

Features	1
Installation/Service Information	2
Troubleshooting	3
Parts List	4
Front Exploded View	6
Rear Exploded View	7
Belting Exploded View.....	8
Cleaning and Lubrication Instructions.....	9
Basic Drawer Dimensions.....	10
Installation Dimensions	11

Features

The *Manual Transaction Drawer™* is a reciprocating conveyor system for use in package passing applications. Burglary, theft protection and bullet resistant features have not been evaluated. The conveyor is designed to extend from the inside to the outside of a facility.

Adjustable stainless steel flanges are provided for mounting. The flanges can be adjusted from 1-1/2" above to 1" below the top of the drawer. Please refer to page 10 for installation dimensions. **Note: Use maximum 3/8" long screws to prevent jamming. 8-32 x 3/8" thread forming screws provided.**

The drawer weighs less than 150 lbs. and can be shipped UPS or FedEx to most locations.

A night latch is provided.

The drawer is constructed of heavy 11 gauge steel with a durable powder coated finish. Note that the top inside panel is made from stainless steel. Its large 25 pound capacity is suitable for commercial or convenience store transactions.

The bin of the drawer is powder coated with a bright red finish and features a stop sign decal that is visible when the drawer is open. The drawer color and stop decal are designed to warn customers not to approach when the drawer is open.

Full 15" extension of drawer.

Full width bill/paper trap bar.

No wiper or sliding type weather seals. Our seals are replaceable and operate in compression to reduce wear and provide the best possible protection from the elements.

There are no roller type drawer guides, which are easily jammed with paper clips and coins. The drawer guides are manufactured from a High-Tech lubricated material designed and built specifically for this application.

The *Manual Transaction Drawer™* features a quiet, self-adjusting, belt drive that allows the drawer to travel approximately twice the distance the lever is moved.

No fuses to replace.

There are multiple optional customer audio panels, with speaker, microphone and 1 call button, available.

Installation and Service Information

Customer Door Removal - See Front Explode

To make installation of the *Manual Transaction Drawer*[™] easier from the inside, it is possible to remove the customer door. Run the drawer out until the teller door is closed and the TD Teller Door Pivots (#58) are exposed. The Customer Door (#1), and Door Arms (#4)) must be removed.

This is accomplished by removing the (2) E-Clips (#56), and (2) Flat Washers (#57) on either side of the drawer. The Customer Door (#1) can then be removed by gently spreading the Door Arm (#4) outward.

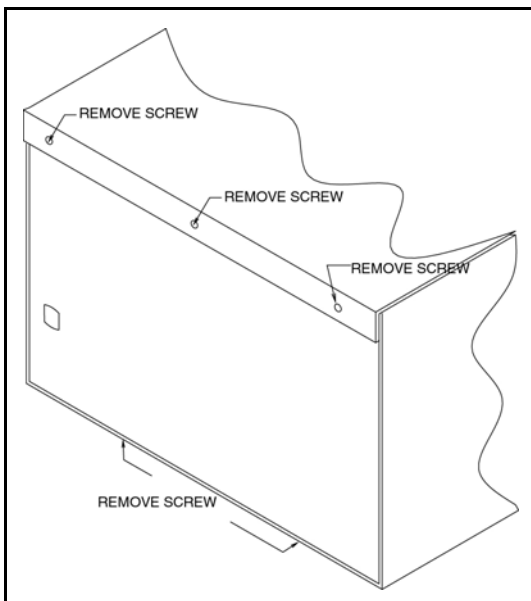
Reverse the steps to reinstall the customer door. **Note that there should be one washer inside and one washer outside of each door arm before reinstalling the "E" clips.**

The Customer Door Seal works best if the *Manual Transaction Drawer*[™] is installed so that the gasket on the customer door contacts the drawer's outer shell first, before contacting the supporting wall or audio panel.

Servicing the Inside of the Drawer

Access to the inside of the drawer is generally done through the back (Figure 1). There are three screws on the face and two on the bottom that hold the back panel in place. After removing the screws, tilt the bottom of the back panel out, and then drop it down to clear the lip of the top panel. Reverse this procedure to reinstall the back panel.

Figure 1



Drawer Removal - See Front & Rear Explode

To remove the MD Bin Liner (#54) it is necessary to disconnect the MD Drawer to Belt Bracket (#19) from the right side of the drawer. There are (2) #8-32 (#41), machine screws that have to be removed.

Next, the Customer Door (#1), Door Arms (#4) must be removed. This is accomplished by removing the (2) E-Clips (#56), and (2) Flat Washers (#57) on either side of the drawer.

Move the MD Bin Liner (#54) inward until the MD Teller Door (51) can be removed from the Teller Door Slides (#52, #53).

The entire MD Bin Liner (#54) may then be removed from the MD Shell (#42) from the inside of the drawer. Reinstalling the drawer is as simple as sliding the drawer back into position and reversing the above procedure.

Troubleshooting

Drawer won't work.....

Check for damage to drawer.

Check belt routing, (see page 7)

Is the drawer jammed? If the drawer is jammed, correct the problem.

Drawer won't run out...

Check night latch, set to unlock.

Drawer won't close fully...

Check that night latch is set to unlock.

Check for damage to drawer.

Check for object between customer door and shell edge.

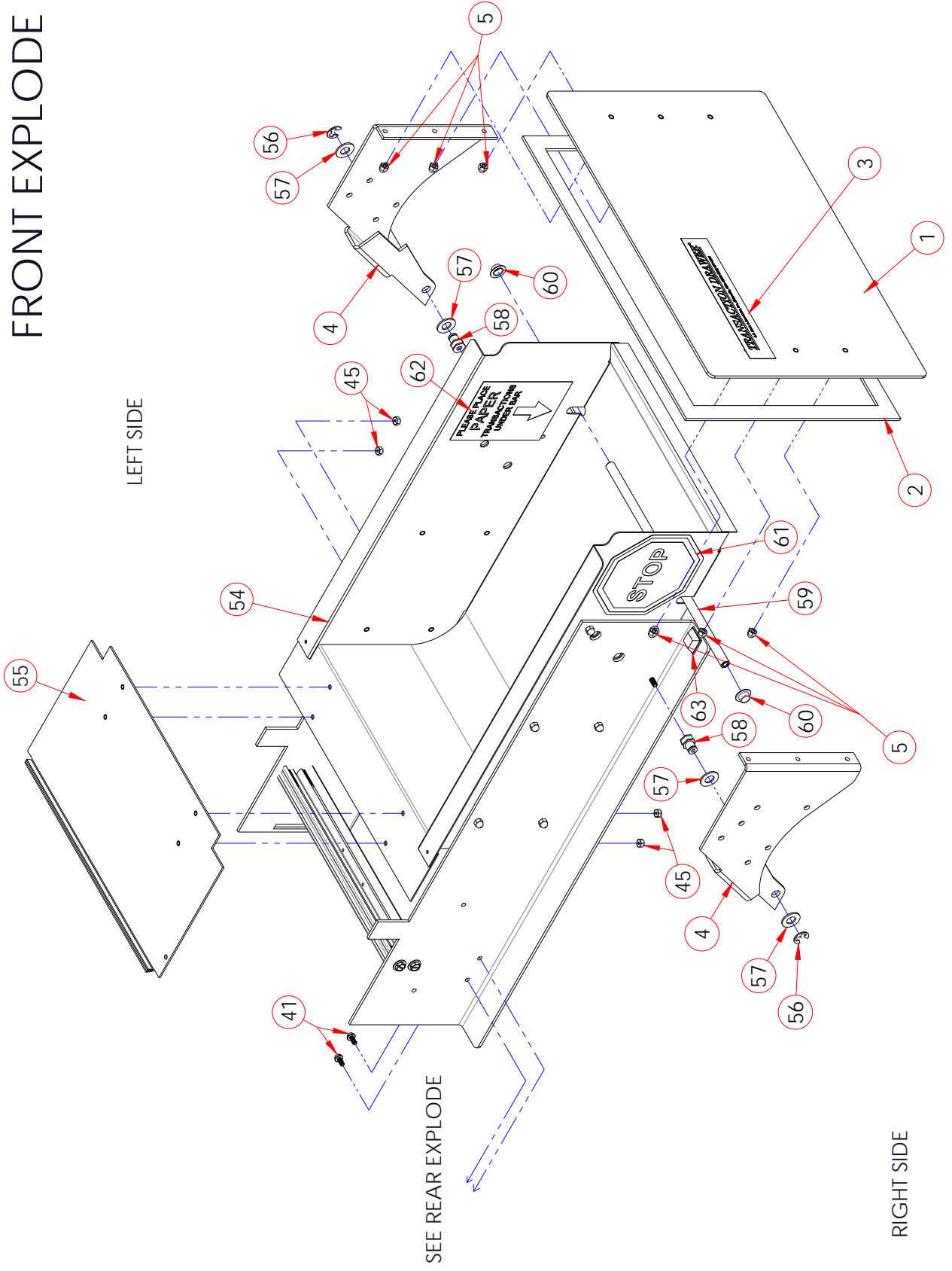
After completing the above, if a problem continues, contact qualified service personnel.

Parts list

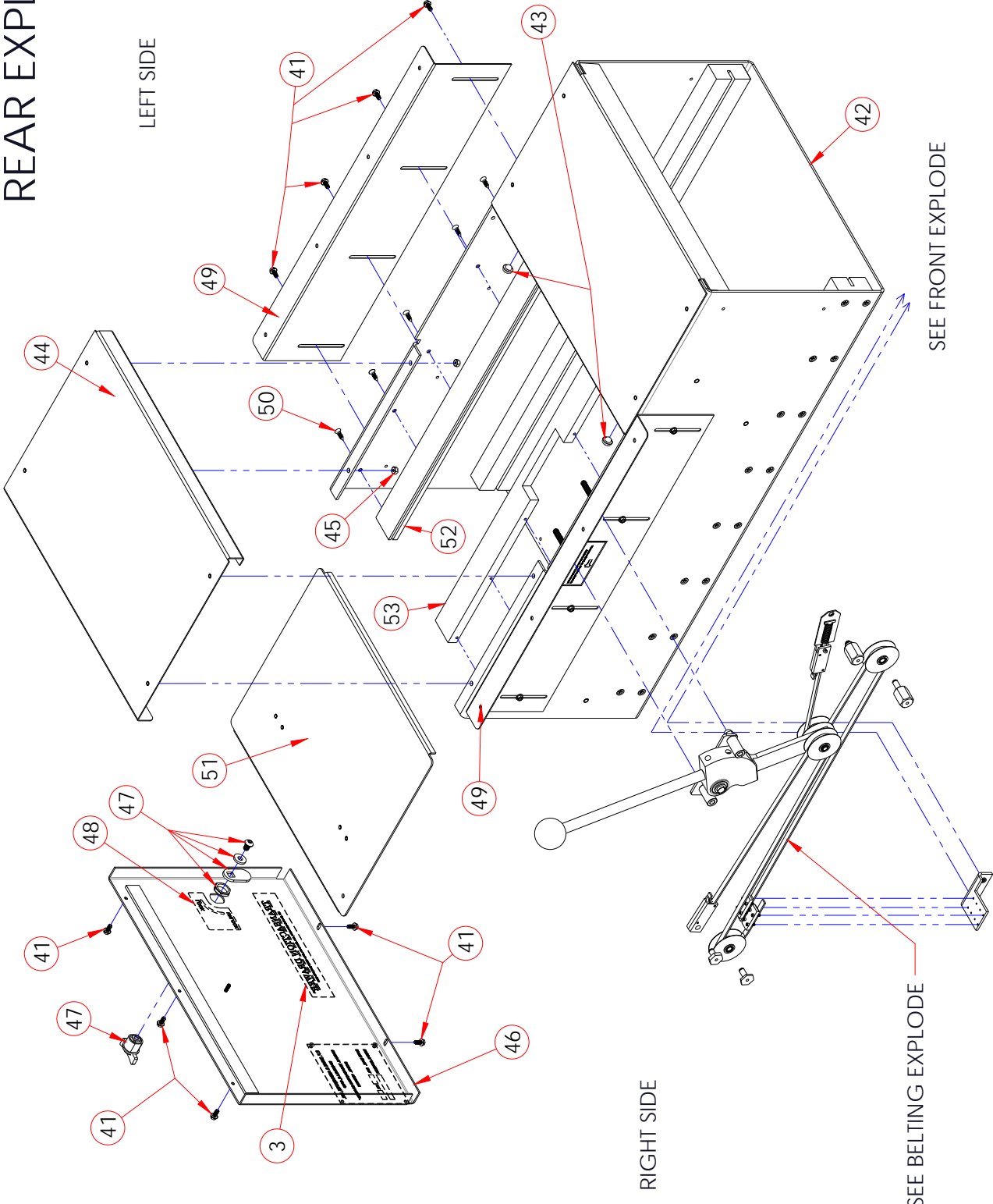
ITEM NO.	PART NUMBER	DESCRIPTION - INCLUDES:	QTY.
1	00513991	TD CUSTOMER DOOR ASSEMBLY (2, 3, 5)	1
2	00529021	TD CUSTOMER DOOR GASKET	1
3	13033011	DRAWER LOGO	2
4	13036991	REPLACEMENT MD DOOR ARM SET (56, 57, 64)	1
5	93005007	# 8-23 ACORN NUT LOW CROWN	6
6	94083933	# 10-32 X 1/2 BUTTON SOCKET MS	1
7	95005005	1/4-20 ACORN NUT	2
8	13023011	MD LEVER MOUNT PLATE SM	1
9	13025011	1/2 OD X 1/4 ID X 1 IN STEEL SPACER	2
10	13024012	MD LEVER 3/8" AXLE	1
11	97016002	.376 X .562 X .0625 SHIM	2
12	00141013	3/8 BEARING WITH FLANGE	2
13	13013012	MD LOWER LEVER	1
14	13013022	MD UPPER LEVER	1
15	00547011	TD MANUAL KNOB	1
16	13031051	MD SPRING RETAINER BELT END	2
17	13031061	MD SPRING RETAINER MOUNT END	1
18	13022021	MD COMPRESSION SPRING	1
19	13006021	MD DRAWER TO BELT BRACKET SM	1
20	13040591	MD FIXED END DRIVE BELT	1
21	13040691	MD SPRING END DRIVE BELT	1
22	95005072	1/4 IN RETAINING RING ZINC	6
23	13045991	MD BELT PULLEY ASSEMBLY	4
24	13012031	MD STANDOFF 1	1
25	13012041	MD STANDOFF 2	1
26	13012051	MD STANDOFF 3	1
27	13012061	MD STANDOFF 4	1
28	13012012	MD PULLEY AXLE	1
29	13039051	MD BELT CLAMP 5	2
30	13039031	MD SPRING END BELT CLAMP A	1
31	13039041	MD SPRING END BELT CLAMP B	1
32	90088001	3/32 X 1/2 COTTER PIN	1
33	13039061	MD FIXED END BELT CLAMP A	1
34	13039071	MD FIXED END BELT CLAMP B	1
35	95006003	1/4 X .010 SHORTENING SHIM	2
36	94248800	3/16 X 1-1/2 ROLL PIN	1
37	91062121	# 4-40 x 3/8 PHILLIPS FLAT HEAD MS	4

38	90062230	# 2-56 X 3/8 SOCKET HEAD CAP SCREW	8
39	95042032	1/4-20 X 1/4 SET SCREW CUP POINT	2
40	92062032	# 6-32 x 3/8 SOCKET SET SCREW	1
41	93064321	# 8-32 X 3/8 HEX THREAD ROLLER	15
42	13001991	MD SHELL ASSEMBLY	1
43	13027021	MD SNAP FIT SMALL BUMPER	2
44	13026011	MD BACK TOP COVER SM	1
45	92005002	# 6-32 NYLON LOCKING NUT	8
46	13018991	MD BACK PANEL ASSEMBLY (3, 47, 48)	1
47	00592991	TD REPLACEMENT LOCK KIT	1
48	00537041	TD LOCK LABEL	1
49	00534011	TD MOUNTING ANGLE	2
50	93120123	# 8 X 3/4 PHILLIPS FLAT HEAD SMS	42
51	13015991	MD TELLER DOOR ASSEMBLY	1
52	13017012	MD TELLER DOOR SLIDE LEFT	1
53	13017022	MD TELLER DOOR SLIDE RIGHT	1
54	13003991	MD DRAWER ASSEMBLY	1
55	13016011	MD TELLER DOOR ACTUATOR SM	1
56	97005071	3/8 E CLIP	2
57	97006000	3/8 SAE FLAT WASHER	4
58	00530012	TD TELLER DOOR PIVOT	2
59	13005012	MD/SD BILL TRAP BAR	1
60	97000073	3/8 SS PUSH CAP	2
61	00537031	TD STOP LABEL	1
62	00537021	TD PLACE PAPER LABEL	1
63	02963011	STICK ON FEET	2
64	13041991	MD GREASE KIT (65, 66)	1
65	04115011	CLEAR GREASE 4CC TUBE	1
66	04191011	BLUE/GREEN GREASE 4CC TUBE	1
67	24098994	MD TRACK REPAIR KIT (4, 64) (Not Shown)	

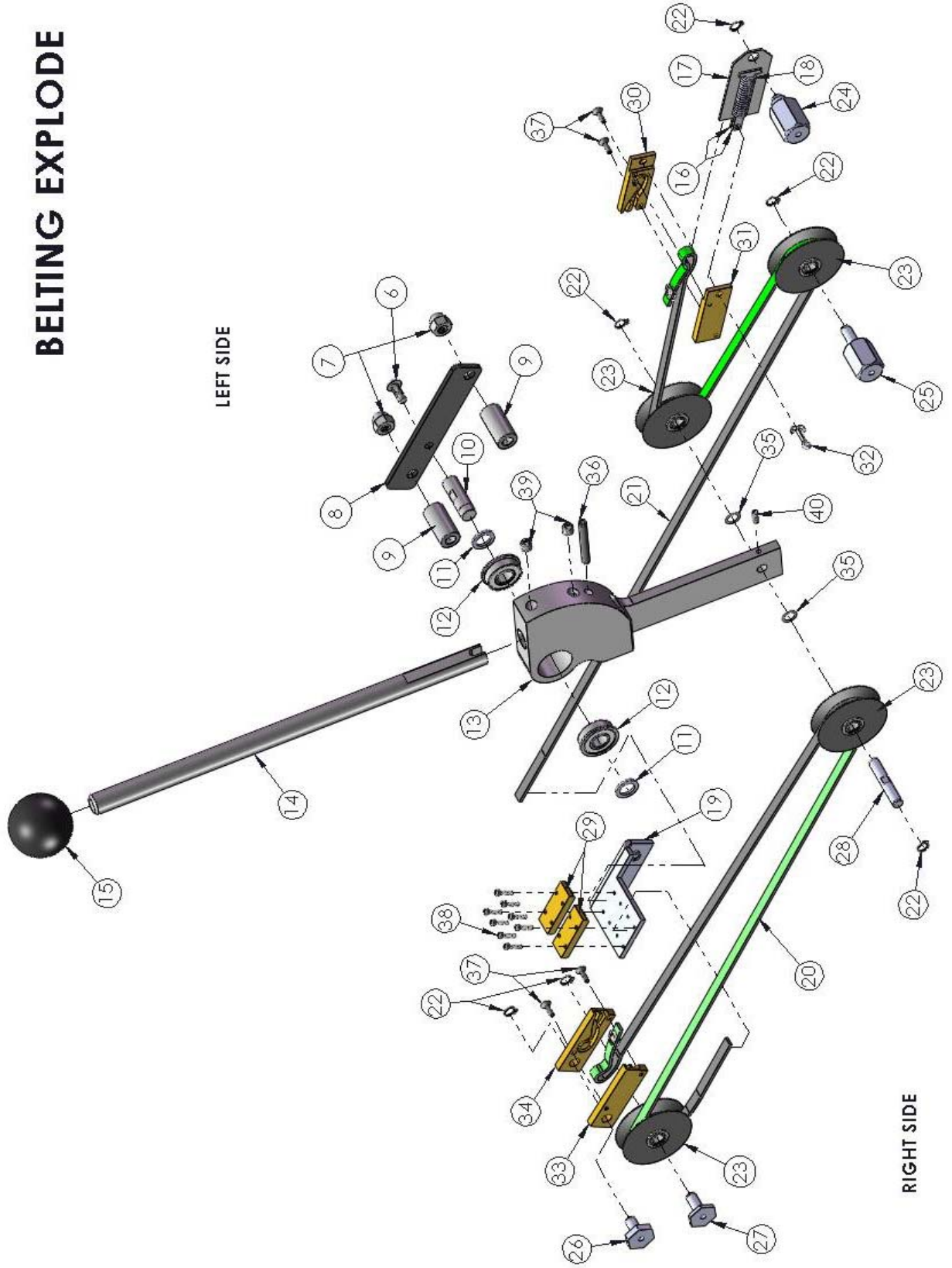
FRONT EXPLODE



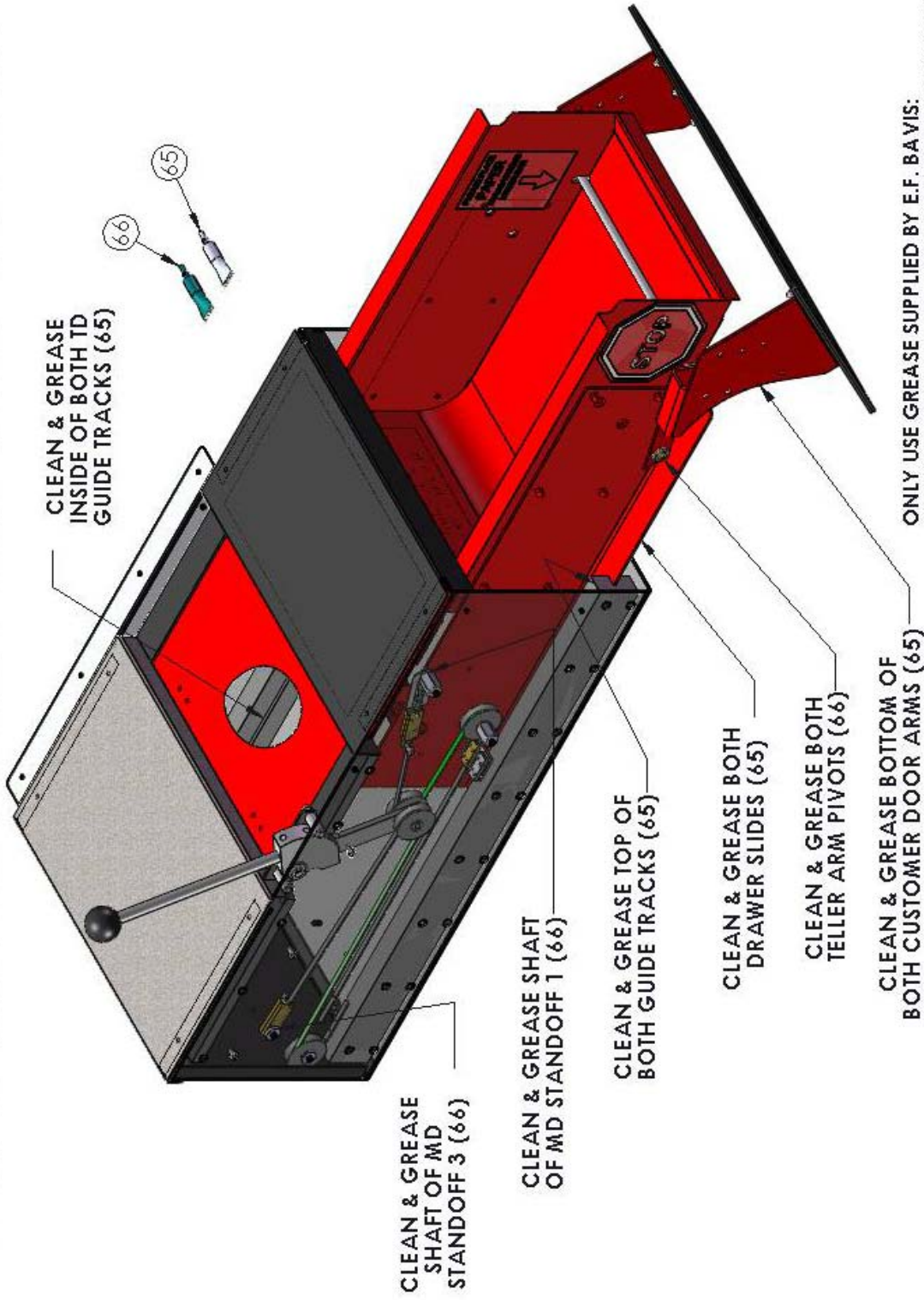
REAR EXPLODE



BELTING EXPLODE



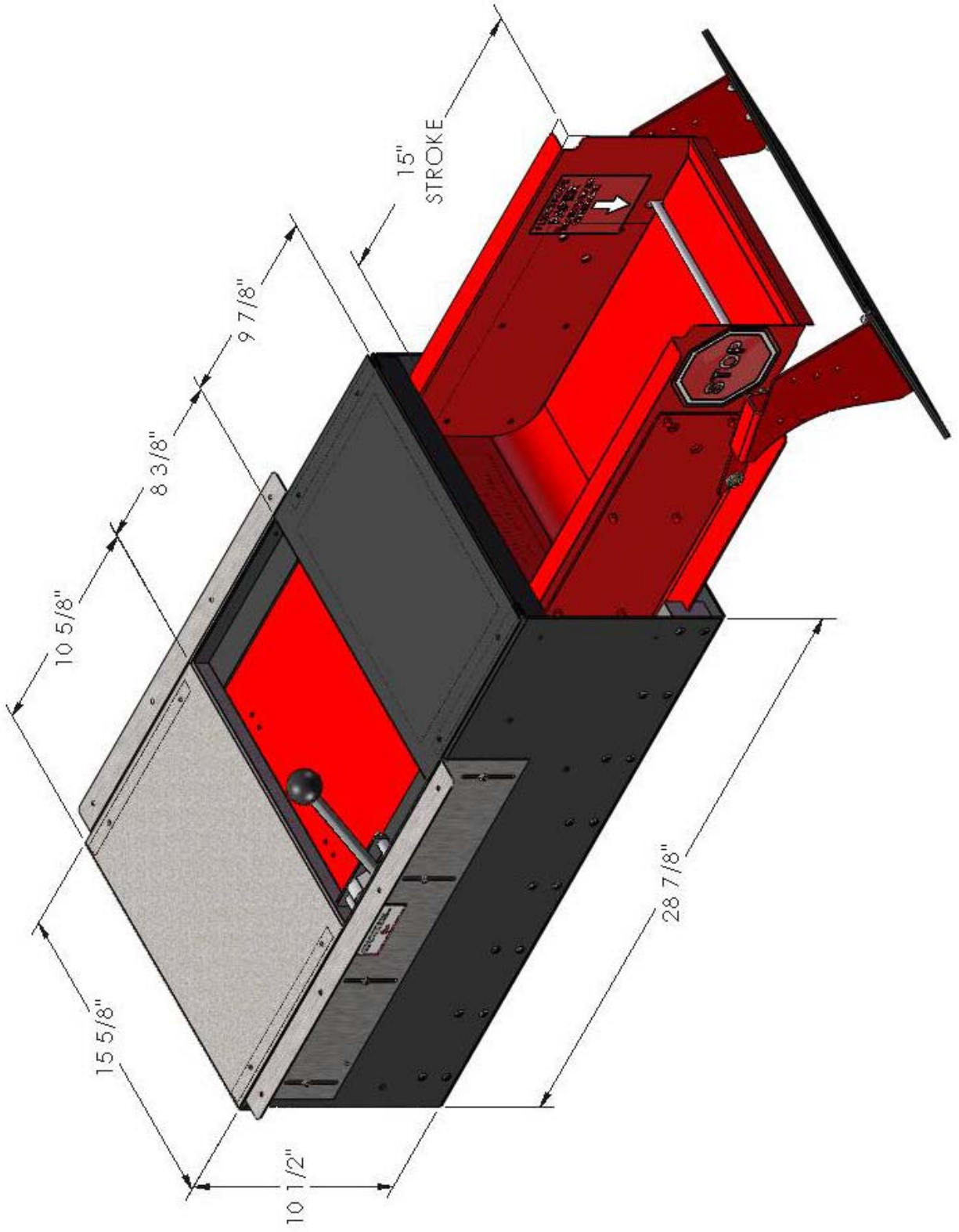
BAVIS MANUAL DRAWER CLEANING AND LUBRICATION INSTRUCTIONS



ONLY USE GREASE SUPPLIED BY E.F. BAVIS:
P/N 04115011 (CLEAR), P/N 04191011 (BLUE/GREEN) OR P/N:
13041991 MANUAL DRAWER GREASE KIT.

- DO NOT CLEAN WITH SOLVENTS.
- WIPE DOWN ALL AREAS WITH A CLEAN DRY CLOTH PRIOR TO APPLYING GREASE.
- DO NOT USE: WD-40, OIL, GRAPHITE, TEFLON, DRY LUBES, OR OTHER LUBRICANTS NOT SUPPLIED BY E.F. BAVIS.

BAVIS MANUAL DRAWER BASIC DIMENSIONS



Manual Transaction Drawer Dimensions

