



201 Grandin Road
Maineville, Ohio 45039
(513) 677-0500

Reverse G-Car Manual

Copyright 2022 E. F. Bavis & Associates, Inc.
All Right Reserved

Revised: 08/16/2022
PN: 00611031

Table of Contents

Reverse G-Car overview.....	1
Reverse G-Car Door Adjustment Procedure	2
Reverse G-Car Door Adjustment Diagram.....	3
Stabilizer Adjustment Procedure	4
Reverse G-Car Replacement Procedure	5
Drive Tape Mounting Diagram	7
Shift Point Adjustment Diagram (Standard Control Board)	8
Shift Point Adjustment Diagram (PWM Control Board).....	9
Reverse G-Car Replacement Parts Diagram.....	10
Replacement Parts List	11
Troubleshooting	12

Reverse G-Car Overview

The red reverse G-Car is interchangeable with the grey reverse CC car

The reverse G-Car has lower weight and symmetrical distribution

The car is made with a single wall construction

The doors opens and closes automatically

The door can be closed manually in the parked position
(The doors will stay closed)

The doors can be opened at any time

The car has clear doors and body panel for viewing of contents inside the car

Reverse G-Car Adjustment Procedure (Refer to the Diagram on Page 3)

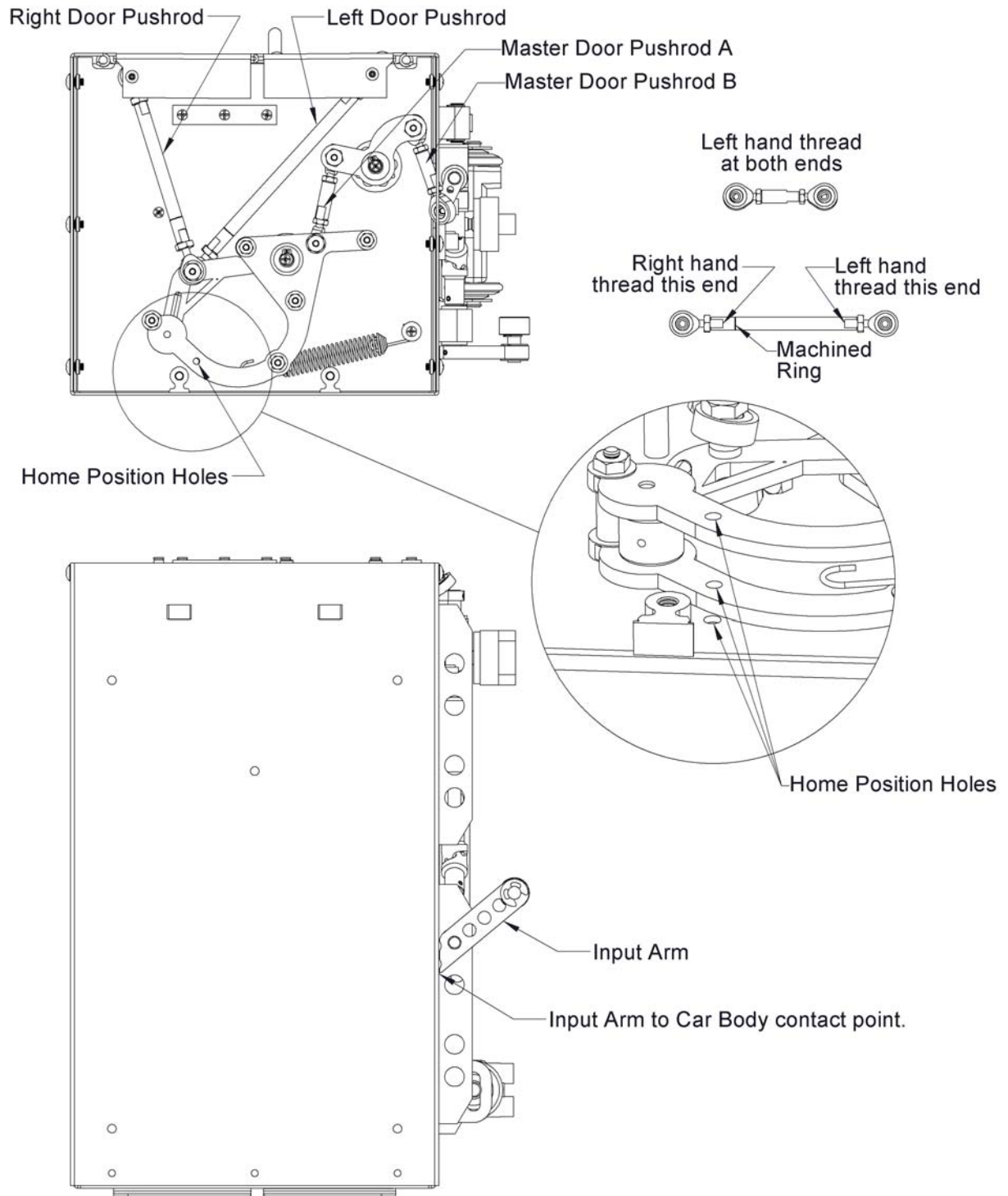
1. Car must be off black plastic stabilizers.
2. Remove door close spring. #8 on page 3
3. Loosen BOTH nuts on each of the left and right door pushrods and the master pushrod A.
4. Adjust the master pushrod A until there is a slight movement of the input arm when the door is closed.
5. Tighten BOTH nuts on the master pushrod.
6. Insert 1/8" pin into home position holes. Pin must go thru both arms into the top sheet metal piece of the car.

NOTE

The Turnbuckles have LEFT hand threads on one end.

7. Rotate door turn buckles to lengthen or shorten the door arms.
8. Adjust Left and Right door arms until doors just close.
9. Tighten BOTH jam nuts on the Left and Right door pushrods.
10. Remove home position pin.
11. Reconnect the door close spring.
12. Test the car for proper operation.

Reverse G-Car Door Adjustment Diagram



Stabilizer Adjustment Procedure

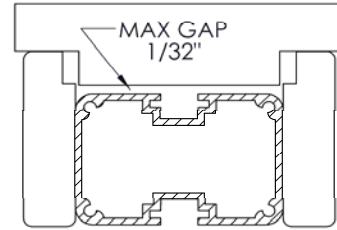
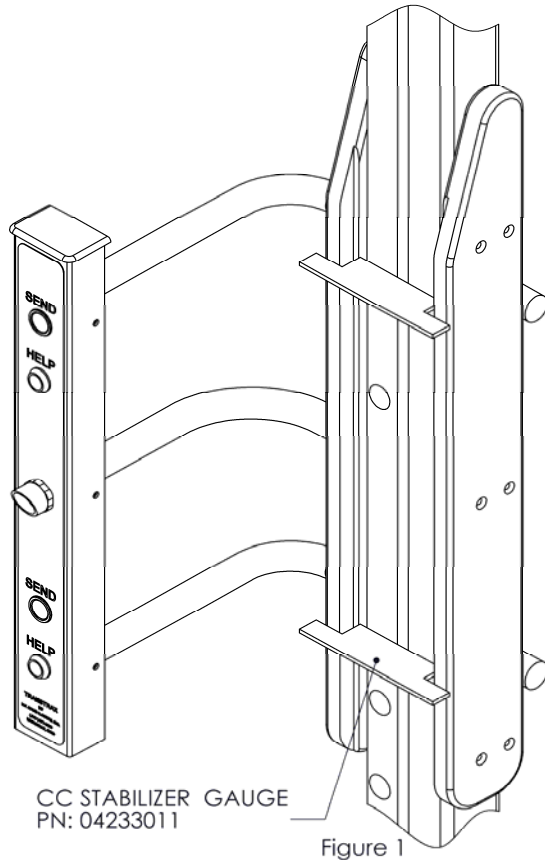


Figure 2

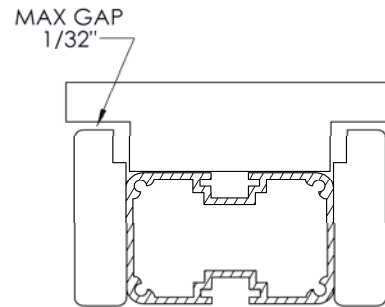


Figure 3

! Stabilizer height must be checked and adjusted (if needed) on both ends of machine prior to installing car. The car **WILL NOT** function properly unless all **FOUR** stabilizers are set to proper height. !

1) Use stabilizer gauge as shown to verify height of stabilizers. Ensure the gap shown in Figure 2 and Figure 3 Does Not Exceed 1/32". Check the stabilizers in two locations as shown in Figure 1.

2) If stabilizers need adjustment please call us: 1-800-937-3322

PN: 00747011

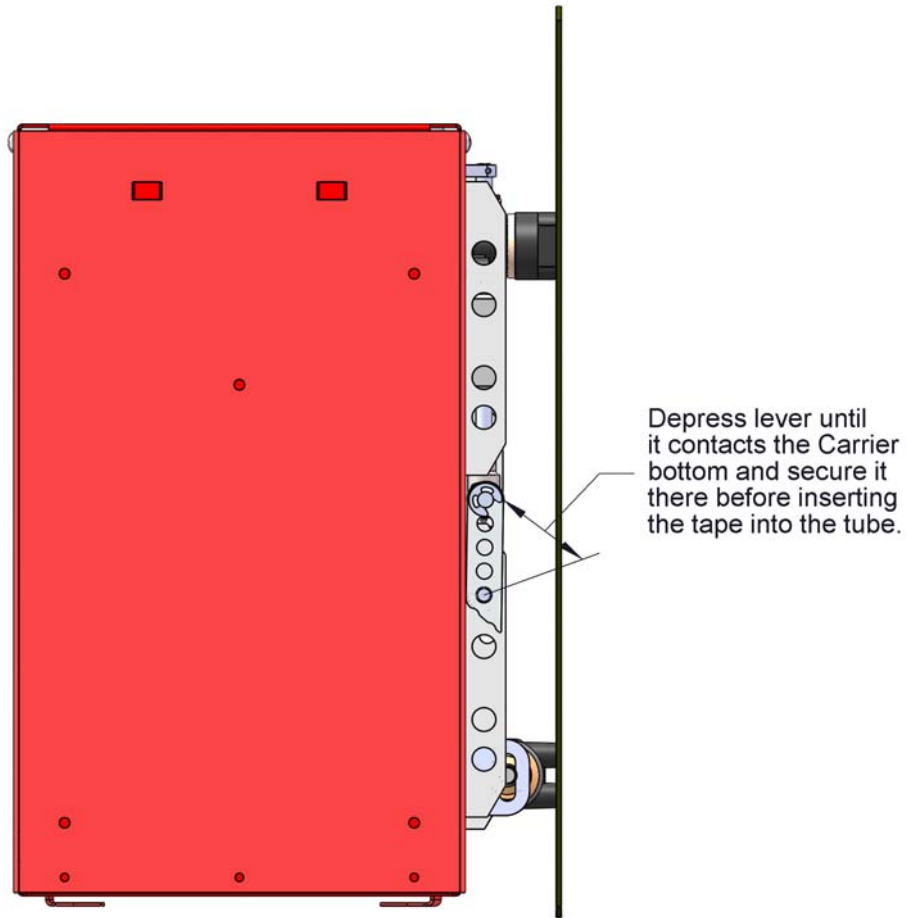
Reverse G-Car Replacement Procedure

CAUTION

DO NOT USE TAPE TO HOLD DOWN THE BRAKE RELEASE BUTTON FOR A LONG PERIOD OF TIME. THIS WILL CAUSE OVERHEATING AND POSSIBLE DAMAGE TO THE BRAKE.

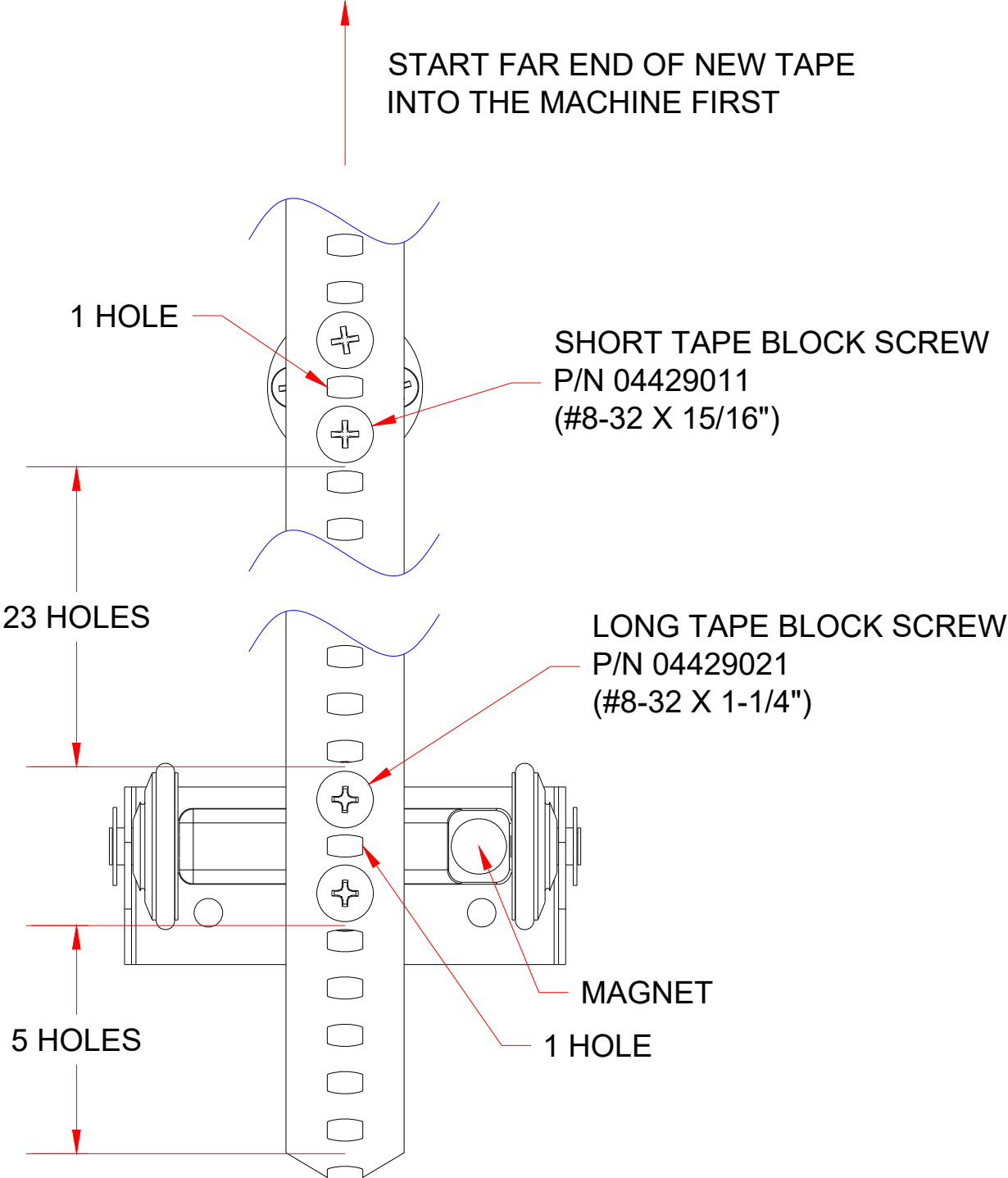
Check the stabilizer distance before you begin by using the stabilizer gauge and instruction sheet provided.

1. Remove the flat head screw(s) that hold the speaker panel to the customer vertical tube. The speaker panel can hang by the speaker lead and mic wire.
2. Go inside and send the car to the car position outside. Turn the power off on the inside vertical assembly.
3. Open the right door of the inside vertical standoff. The door is hinged; removing the two screws will allow the door to open.
4. On the front of tube, insert a flat head screwdriver into one of the slots of the drive tape.
5. Press and hold the brake release button. This is located on the brake board that is mounted on the right door of the inside vertical standoff.
6. Push up on the screwdriver pushing the tape up. Be careful not to scratch the vertical tube, observing the car outside as it lowers. Do not let the car hit the island. Do this until the drive tape disengages from the drive sprocket.
7. Go outside and remove the screws that attach the car to the drive tape. Inspect the drive tape for wear. If there is wear, consult the factory for a replacement drive tape.
8. Mount the new car to the drive tape. Make sure that you have 23 slots in the drive tape between the tape blocks and that you use the screws provided. See the diagram on page 7.
9. Depress door opening lever until it contacts the Carrier bottom, and then use a piece of tape to hold the actuation lever in so that it will not jam on the stabilizer during installation. See the illustration on the next page.



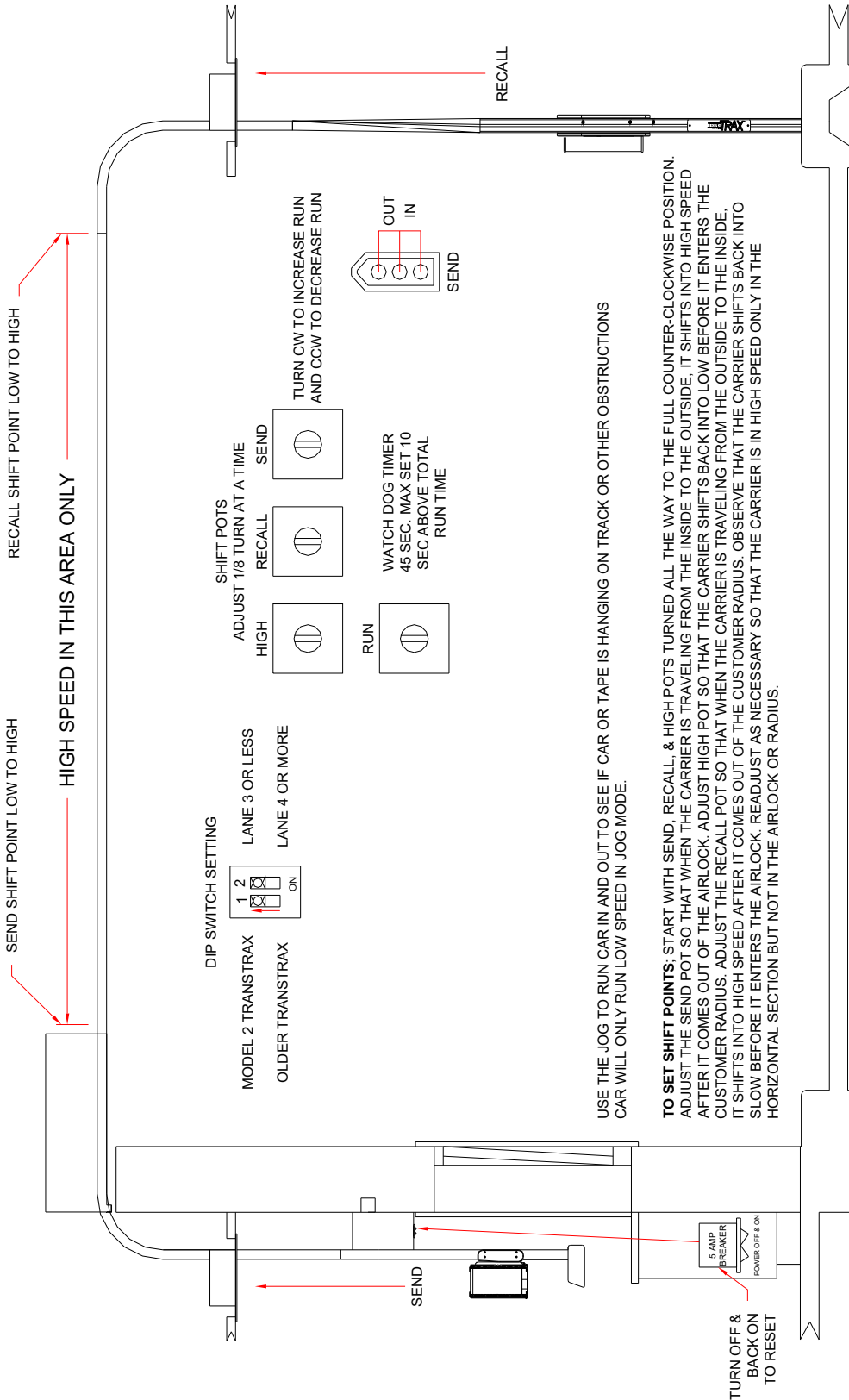
10. Go inside and insert a screwdriver into one of the slots of the drive tape.
11. Press and hold the brake release button.
12. Pull down on the screwdriver feeding the tape around the drive sprocket.
Continue to do this until the car rests on the stabilizers outside. Be careful that the car is not hooked on the speaker or mic wire.
13. Turn the power on at the inside control assembly.
14. Recall the car.
15. Run the unit and observe for proper operation. NOTE: If the car started out above the outside stop switches, it will not shift into high speed. Simply run the car again and it should shift speeds.
16. If the shift points need to be adjusted, Please refer to the diagram on pages 8 & 9.
17. Replace the speaker panel on the customer vertical tube.

Drive Tape Mounting Diagram

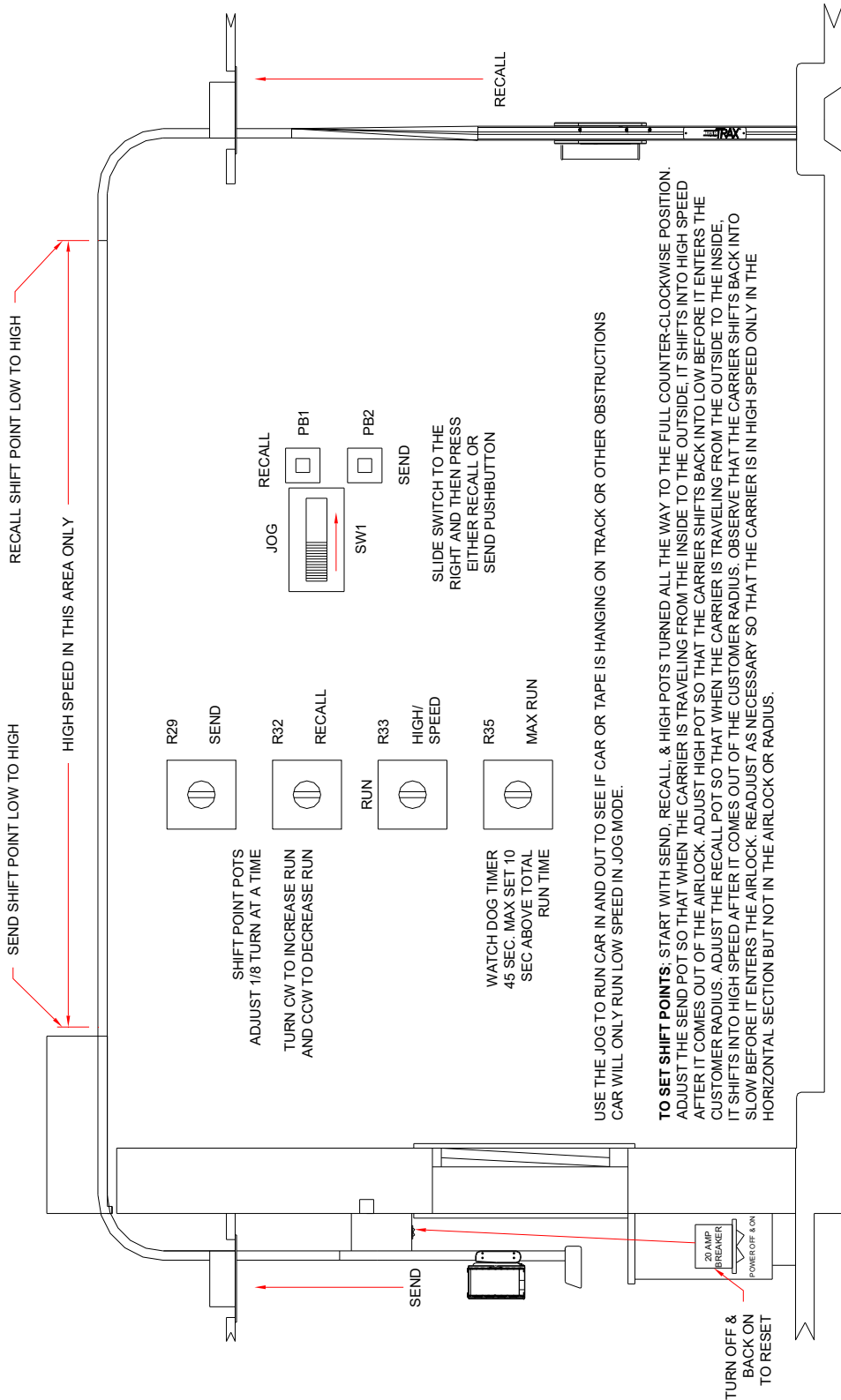


Revised 08/16/2022

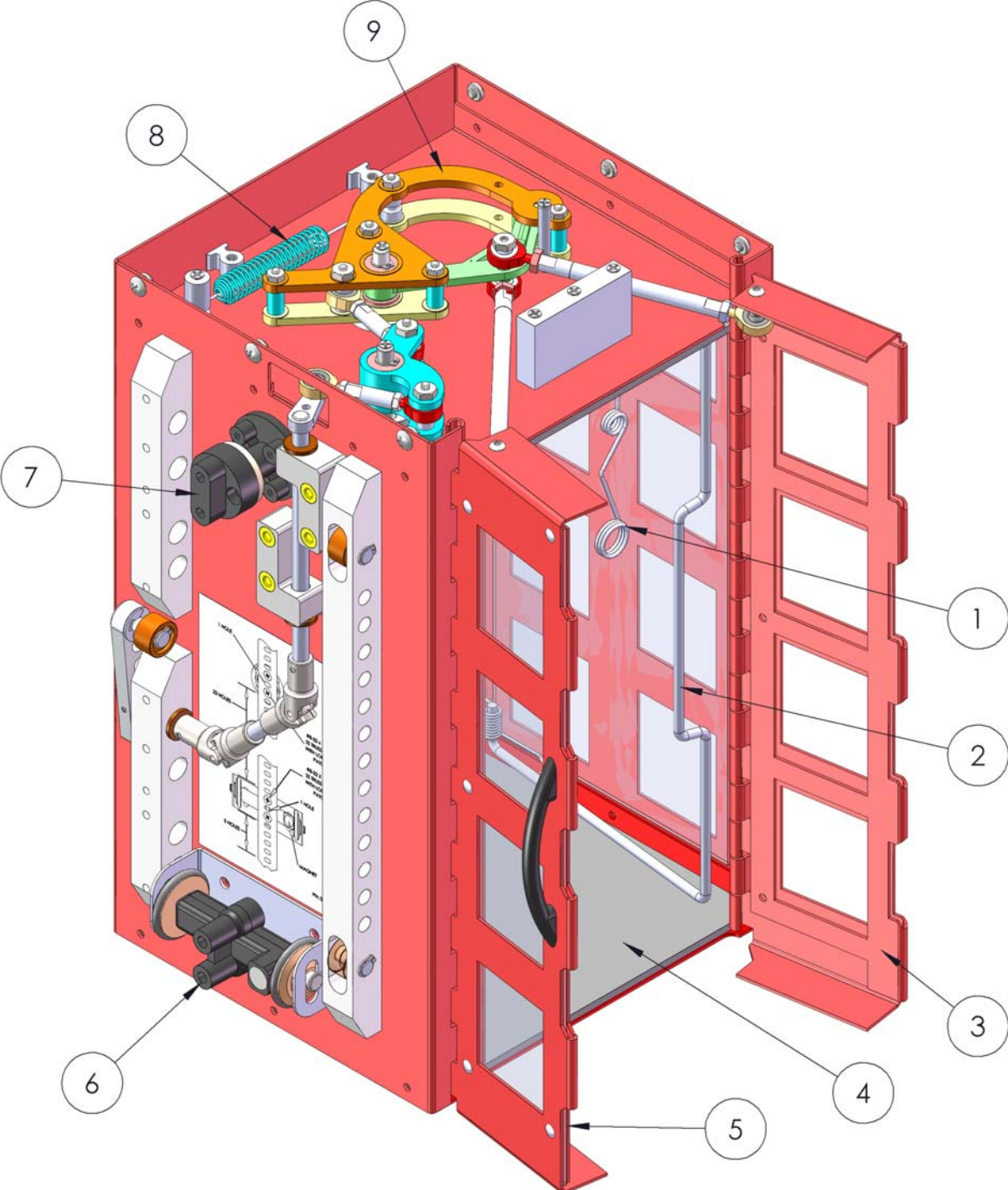
Shift Point Adjustment Diagram (Standard Control Board)



Shift Point Adjustment Diagram (PWM Control Board)



Reverse G-Car Replacement Parts Diagram



Replacement Parts List

NUMBER	PART #	DESCRIPTION	REPLACES
1	04105021	CC HOLD DOWN SPRING	REPLACES A BENT OR BROKEN SPRING
2	04081991	<i>GC BAIL REPLACEMENT KIT</i>	REPLACES A BENT BAIL
3	04304211	RGC RIGHT DOOR ASSEMBLY	REPLACES A BENT DOOR - INCLUDES LENS
4A	04338021	GC BAIL BOTTOM SPRING	REPLACES A BROKEN BOTTOM BAIL SPRING (BAIL SPRINGS SOLD TOGETHER)
4B	04338011	GC BAIL TOP SPRING	REPLACES A BROKEN TOP BAIL SPRING
5	04304121	GC LEFT DOOR ASSEMBLY	REPLACES A BENT DOOR - INCLUDES LENS
6	04203991	CC LARGE TAPE BLOCK KIT	REPLACES A STRIPPED OUT TAPE BLOCK
7	04367991	SPHERICAL TAPE BLOCK KIT	REPLACES A WORN OR STRIPPED OUT BLOCK
8	04317021	<i>GC DOOR CLOSE SPRING</i>	REPLACES A STRETCHED OR BROKE SPRING
9	04394991	RGC MAGNETIC OVER RUN KIT	REPLACES A BROKEN OVER RUN ASSEMBLY

Revised 08/16/2022

Troubleshooting

The car door will not open

1. Adjust the left and right door adjustment (see pages 2 & 3).
2. The drive tape is worn.
3. The tape block screws are stripped out. Consult the factory for replacements

The car door will not close

1. Adjust the left and right door adjustment (see pages 2 & 3).
2. The door close spring is broke, stretches, or disconnected. If broke or stretched, consult the factory for replacements.

The car door(s) open too far

1. Adjust the door travel adjustment (see pages 2 & 3).

Revisions:

ECN	Date
22639	08/16/2022

