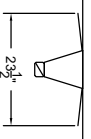
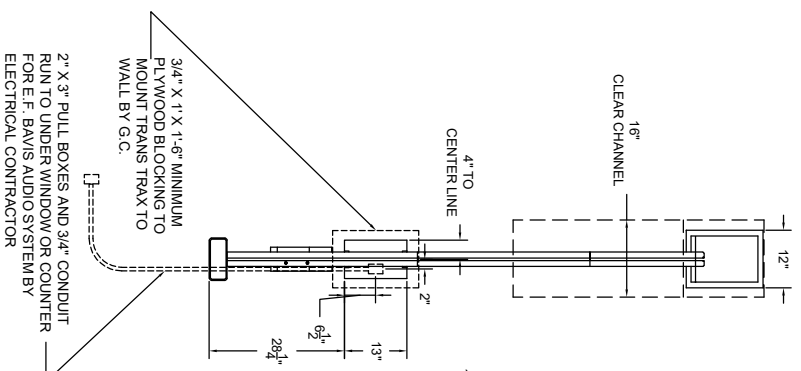


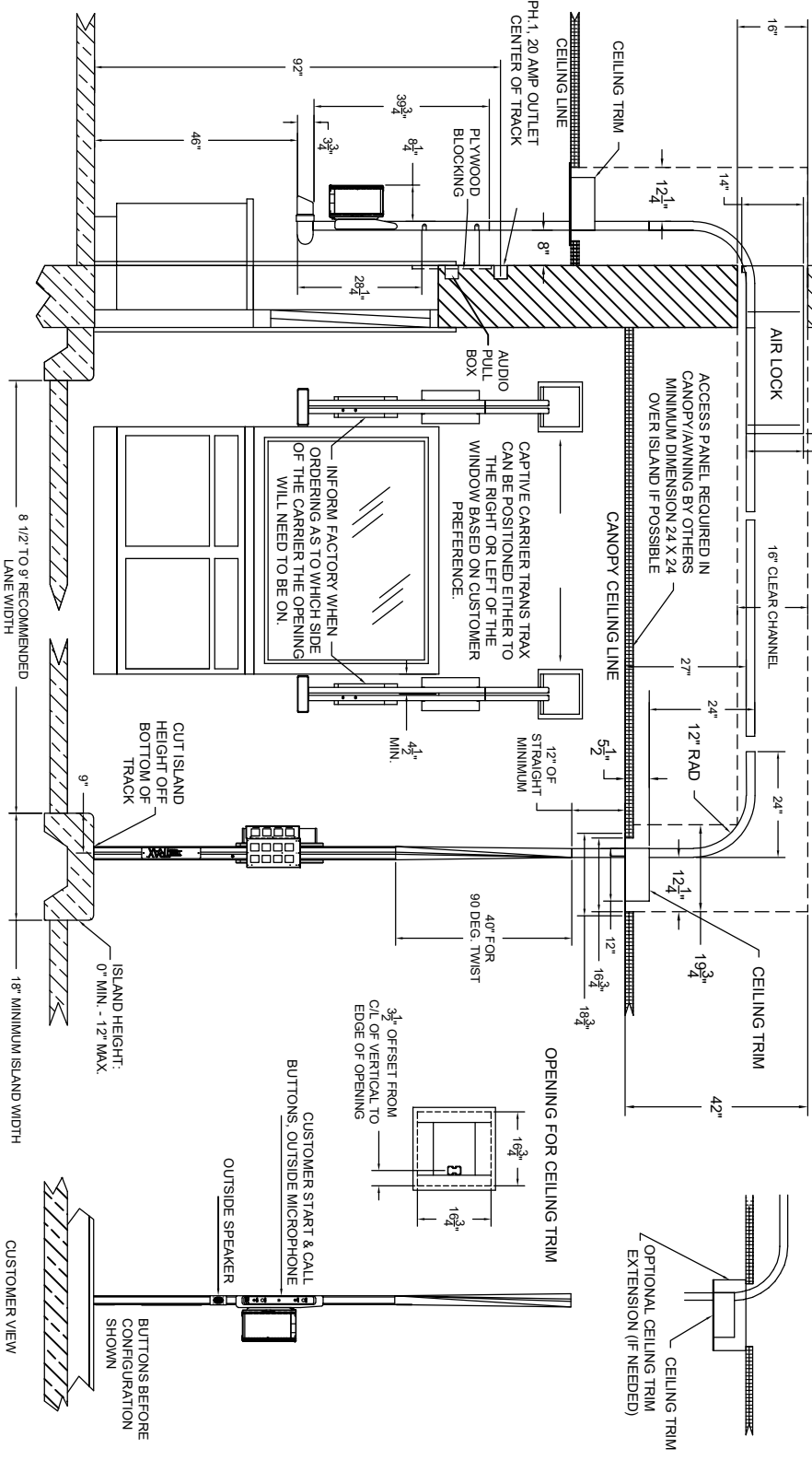
SPACE REQUIRED TO OPEN STANDOFF DOORS



ROUGH WALL OPENING



MAXIMUM OF 16" TO TOP OF HORIZONTAL TUBE FROM DRIVE SURFACE OR FINISHED FLOOR, WHICHEVER IS THE GREATER.



RECOMMENDED MINIMUM - MAXIMUM HORIZONTAL LENGTH:
 MIN. C-L TO C-L OF VERTICALS: 32"
 MAX. C-L TO C-L OF VERTICALS: 33'-10"

HORIZONTAL TUBE SHOULD HAVE A SUPPORT EVERY 10' CAPABLE OF 150 LBS.

IF THE HORIZONTAL TUBE IS USED UNCLUT IN THE HORIZONTAL, THERE ARE ENOUGH SUPPLIES TO POSITION THE TOP OF THE HORIZONTAL TUBE 12" ABOVE THE DRIVEWAY SURFACE.

REVISION 8/27/24	DRAWN B. PRINCE	DATE 03/25/05	SIZE A	DRAWING NO. TTCCTYP-REV 1	SHEET 1 OF 1
<p>PROPRIETARY</p> <p>THIS DOCUMENTATION AND INFORMATION CONTAINED HEREIN IS THE SOLE PROPERTY OF BAVIS FABACRAFT. IT SHALL BE RETURNED UPON REQUEST AND SHALL NOT BE REPRODUCED IN WHOLE OR IN PART, OR DISCLOSED TO ANYONE ELSE, OR USED, WITHOUT WRITTEN CONSENT OF BAVIS FABACRAFT.</p>					
<p>B BAVIS FABACRAFT</p> <p>201 GRANDIN RD. MAINEVILLE, OH 45039 T: 513-677-0500 E: info@bavis.com www.bavis.com</p>					
<p>TITLE REVERSE CAPTIVE CARRIER TRANSTRAX TYPICAL DIMENSIONS</p>					
<p>DIMENSIONS ARE IN INCHES UNLESS OTHERWISE SPECIFIED</p>					