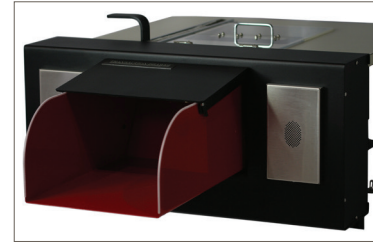


MANUAL TRANSACTION DRAWERS



PREMIUM MANUAL TRANSACTION DRAWER



BASIC MANUAL TRANSACTION DRAWER WITH COUNTERTOP

Ratings	NA	NA
Materials used	11-Gauge Steel Case, .050 aluminum bin, .125 Aluminum Door	14-Gauge Steel Case, 16-Gauge Steel Bin, 14-Gauge Steel Door
Finish options	Door and frame - black powder coat standard; bin - red standard (custom finishes available at additional cost)	Door and frame - black powder coat standard; bin - red standard (custom finishes available at additional cost)
Rough wall opening dimensions	10-3/4" H x 1'-4" W	14-7/8" H x 32-1/4" W
Unit dimensions (closed)	2' 5" L x 1' 3-5/8" W x 11" H	30" L x 32" W x 14-3/4" H total; 23-7/8" L x 29-7/16" W counter space
Drawer extension (dimensions of audio panel will change length of extension from the wall)	15" from drawer frame	16-11/16" from drawer frame
Bin dimensions	"17-1/2" L x 11" W x 6-9/16" H (1263 cu. in.)"	"17-7/8" L x 12-5/16" W x 8" H (1,760 cu. in.)"
Controls	Manual open and close	Manual open and close
Security features	Automatic teller & customer door; manual teller lock	Automatic teller & customer door; manual teller lock
Additional options	Customer Door: door with bumper Drawer Accessories: bin heater kit, card reader cord kit Audio Panels: Refer to Drawer Retrofit Catalog	Drawer Accessories: Card reader cord kit, heater kit, double red bin heater kit
Audio included	None	Exterior audio included (mic, speaker, call button)
Model numbers	13000991	28000993

Some products may be shown with accessories not included with standard offering or pricing.